



Datasheet for ABIN7266868
anti-Dysferlin antibody



[Go to Product page](#)

2 Images

Overview

Quantity:	100 µL
Target:	Dysferlin (DYSF)
Reactivity:	Human
Host:	Rabbit
Clonality:	Monoclonal
Conjugate:	This Dysferlin antibody is un-conjugated
Application:	Western Blotting (WB), Immunohistochemistry (IHC)

Product Details

Purpose:	Dysferlin (Romeo) Rabbit mAb
Immunogen:	A synthesized peptide derived from human Dysferlin (Romeo)
Isotype:	IgG
Cross-Reactivity:	Human, Mouse
Characteristics:	Monoclonal Antibodies
Purification:	Affinity purification

Target Details

Target:	Dysferlin (DYSF)
Alternative Name:	DYSF (DYSF Products)
Background:	The protein encoded by this gene belongs to the ferlin family and is a skeletal muscle protein

Target Details

found associated with the sarcolemma. It is involved in muscle contraction and contains C2 domains that play a role in calcium-mediated membrane fusion events, suggesting that it may be involved in membrane regeneration and repair. In addition, the protein encoded by this gene binds caveolin-3, a skeletal muscle membrane protein which is important in the formation of caveolae. Specific mutations in this gene have been shown to cause autosomal recessive limb girdle muscular dystrophy type 2B (LGMD2B) as well as Miyoshi myopathy. Alternative splicing results in multiple transcript variants. [provided by RefSeq, Aug 2008],FER1L1, LGMD2B, MMD1,Cell Biology & Developmental Biology,DYSF

Molecular Weight: 280kDa

Gene ID: 8291

UniProt: [075923](#)

Application Details

Application Notes: WB,1:500 - 1:2000,IHC,1:50 - 1:200

Restrictions: For Research Use only

Handling

Format: Liquid

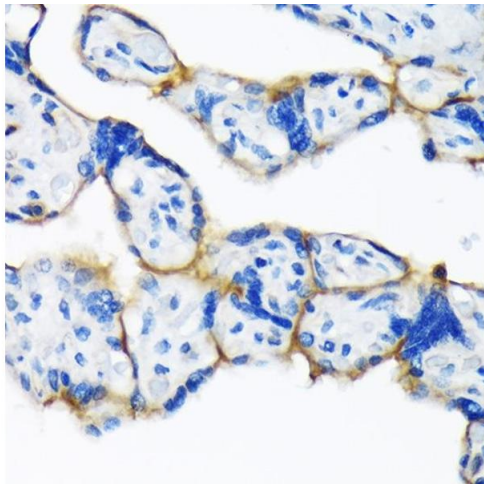
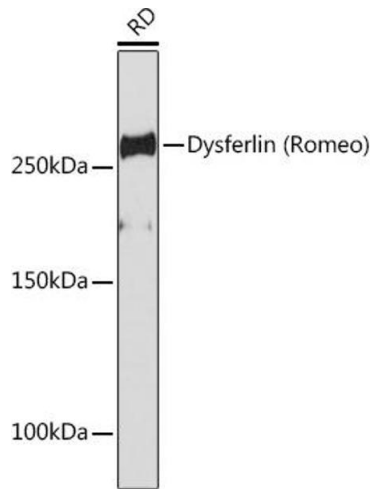
Buffer: PBS with 0.02 % sodium azide,0.05 % BSA,50 % glycerol, pH 7.3.

Preservative: Sodium azide

Precaution of Use: This product contains Sodium azide: a POISONOUS AND HAZARDOUS SUBSTANCE which should be handled by trained staff only.

Storage: -20 °C

Storage Comment: Store at -20°C. Avoid freeze / thaw cycles.



Western Blotting

Image 1. Western blot analysis of extracts of RD cells, using Dysferlin (Romeo) Rabbit mAb (ABIN7266868) at 1:1000 dilution. Secondary antibody: HRP Goat Anti-Rabbit IgG (H+L) (ABIN1684268 and ABIN3020597) at 1:10000 dilution. Lysates/proteins: 25 µg per lane. Blocking buffer: 3 % nonfat dry milk in TBST. Detection: ECL Basic Kit (RM00020). Exposure time: 30s.

Immunohistochemistry

Image 2. Immunohistochemistry of paraffin-embedded human placenta using Dysferlin (Romeo) Rabbit mAb (ABIN7266868) at dilution of 1:100 (40x lens). Perform microwave antigen retrieval with 10 mM Tris/EDTA buffer pH 9.0 before commencing with IHC staining protocol.