

Datasheet for ABIN7266876

anti-E2F6 antibody**3** Images[Go to Product page](#)

Overview

Quantity:	100 µL
Target:	E2F6
Reactivity:	Human
Host:	Rabbit
Clonality:	Monoclonal
Conjugate:	This E2F6 antibody is un-conjugated
Application:	Western Blotting (WB), Immunoprecipitation (IP), Chromatin Immunoprecipitation (ChIP)

Product Details

Purpose:	E2F6 Rabbit mAb
Immunogen:	A synthesized peptide derived from human E2F6
Isotype:	IgG
Cross-Reactivity:	Human
Characteristics:	Monoclonal Antibodies
Purification:	Affinity purification

Target Details

Target:	E2F6
Alternative Name:	E2F6 (E2F6 Products)
Background:	This gene encodes a member of a family of transcription factors that play a crucial role in the

Target Details

control of the cell cycle. The protein encoded by this gene lacks the transactivation and tumor suppressor protein association domains found in other family members, and contains a modular suppression domain that functions in the inhibition of transcription. It interacts in a complex with chromatin modifying factors. There are pseudogenes for this gene on chromosomes 22 and X. Alternative splicing results in multiple transcript variants. [provided by RefSeq, May 2013],E2F-6,Epigenetics & Nuclear Signaling,ErbB-HER Signaling Pathway,Signal Transduction,Transcription Factors,E2F6

Molecular Weight: 32kDa

Gene ID: 1876

UniProt: [075461](#)

Application Details

Application Notes: WB,1:500 - 1:2000,IP,1:50 - 1:200,ChIP,1:50 - 1:200

Restrictions: For Research Use only

Handling

Format: Liquid

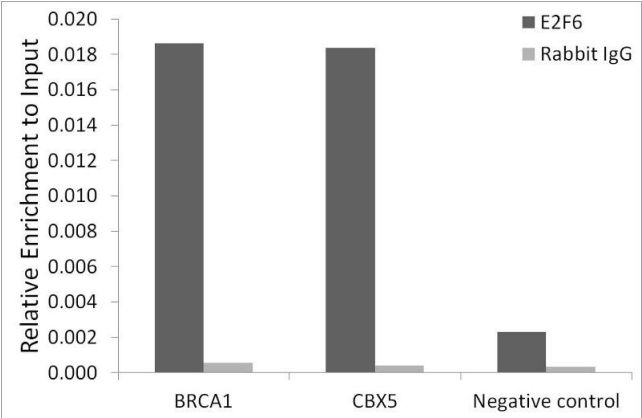
Buffer: PBS with 0.02 % sodium azide,0.05 % BSA,50 % glycerol, pH 7.3.

Preservative: Sodium azide

Precaution of Use: This product contains Sodium azide: a POISONOUS AND HAZARDOUS SUBSTANCE which should be handled by trained staff only.

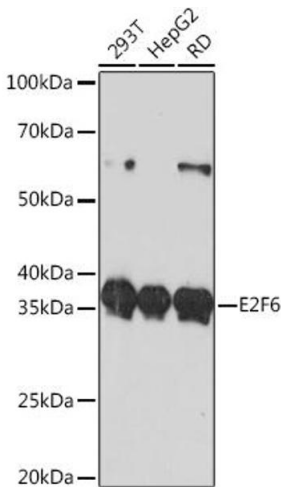
Storage: -20 °C

Storage Comment: Store at -20°C. Avoid freeze / thaw cycles.



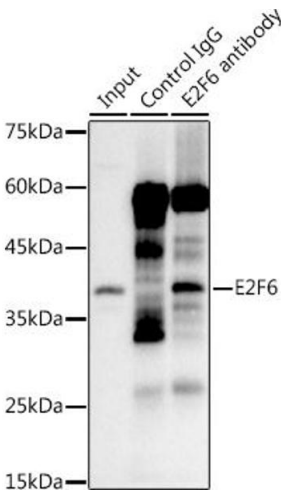
Chromatin Immunoprecipitation

Image 1. Chromatin immunoprecipitation analysis of extracts of 293T cells, using E2F6 antibody (ABIN7266876) and rabbit IgG. The amount of immunoprecipitated DNA was checked by quantitative PCR. Histogram was constructed by the ratios of the immunoprecipitated DNA to the input.



Western Blotting

Image 2. Western blot analysis of extracts of various cell lines, using E2F6 Rabbit mAb (ABIN7266876) at 1:1000 dilution. Secondary antibody: HRP Goat Anti-Rabbit IgG (H+L) (ABIN1684268 and ABIN3020597) at 1:10000 dilution. Lysates/proteins: 25 µg per lane. Blocking buffer: 3 % nonfat dry milk in TBST. Detection: ECL Basic Kit (RM00020). Exposure time: 90s.



Immunoprecipitation

Image 3. Immunoprecipitation analysis of 300 µg extracts of 293T cells using 3 µg E2F6 antibody (ABIN7266876). Western blot was performed from the immunoprecipitate using E2F6 antibody (ABIN7266876) at a dilution of 1:1000.