



[Go to Product page](#)

Datasheet for ABIN7266877
anti-E2F7 antibody (AA 540-740)

2 Images

Overview

Quantity:	100 µL
Target:	E2F7
Binding Specificity:	AA 540-740
Reactivity:	Human
Host:	Rabbit
Clonality:	Polyclonal
Conjugate:	This E2F7 antibody is un-conjugated
Application:	Western Blotting (WB)

Product Details

Purpose:	E2F7 Rabbit pAb
Immunogen:	Recombinant fusion protein containing a sequence corresponding to amino acids 540-740 of human E2F7 (NP_976328.2).
Sequence:	LLAGQPLVYV PSASLFMLYG SLQEGPASGS GSERDDRSSE APATVELSSA PSAQKRLCEE RKPQEEDEPA TKRQSREYED GPLSLVMPKK PSDSTDLASP KTMGNRASIP LKDIHVNGQL PAAEEISGKA TANSLVSSEW GNPSRNTDVE KPSKENESTK EPSLLQYLVCV QSPAGLNGFN VLLSGSQTPP TVGPSSGQLP S
Isotype:	IgG
Cross-Reactivity:	Human, Mouse, Rat
Characteristics:	Polyclonal Antibodies

Product Details

Purification: Affinity purification

Target Details

Target: E2F7

Alternative Name: E2F7 ([E2F7 Products](#))

Background: E2F transcription factors, such as E2F7, play an essential role in the regulation of cell cycle progression (Di Stefano et al., 2003 [PubMed 14633988]), E2F7, Epigenetics & Nuclear Signaling, Transcription Factors, Signal Transduction, ErbB-HER Signaling Pathway, E2F7

Molecular Weight: 80kDa/98kDa/99kDa

Gene ID: 144455

UniProt: [Q96AV8](#)

Application Details

Application Notes: WB, 1:500 - 1:2000

Restrictions: For Research Use only

Handling

Format: Liquid

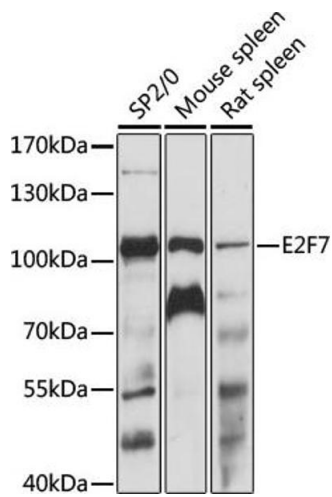
Buffer: PBS with 0.02 % sodium azide, 50 % glycerol, pH 7.3.

Preservative: Sodium azide

Precaution of Use: This product contains Sodium azide: a POISONOUS AND HAZARDOUS SUBSTANCE which should be handled by trained staff only.

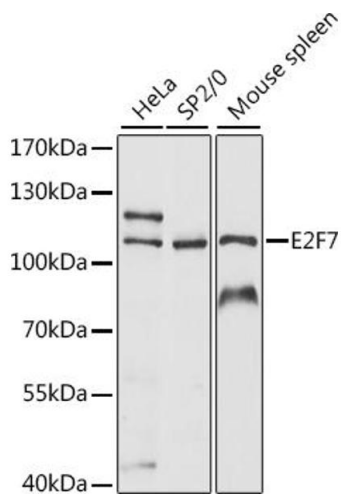
Storage: -20 °C

Storage Comment: Store at -20°C. Avoid freeze / thaw cycles.



Western Blotting

Image 1. Western blot analysis of extracts of various cell lines, using E2F7 antibody (ABIN7266877) at 1:1000 dilution. Secondary antibody: HRP Goat Anti-Rabbit IgG (H+L) (ABIN1684268 and ABIN3020597) at 1:10000 dilution. Lysates/proteins: 25 µg per lane. Blocking buffer: 3 % nonfat dry milk in TBST. Detection: ECL Enhanced Kit (RM00021). Exposure time: 60s.



Western Blotting

Image 2. Western blot analysis of extracts of various cell lines, using E2F7 antibody (ABIN7266877) at 1:1000 dilution. Secondary antibody: HRP Goat Anti-Rabbit IgG (H+L) (ABIN1684268 and ABIN3020597) at 1:10000 dilution. Lysates/proteins: 25 µg per lane. Blocking buffer: 3 % nonfat dry milk in TBST. Detection: ECL Basic Kit (RM00020). Exposure time: 90s.