



[Go to Product page](#)

Datasheet for ABIN7266891
anti-EML4 antibody (AA 360-560)

5 Images

Overview

Quantity:	100 µL
Target:	EML4
Binding Specificity:	AA 360-560
Reactivity:	Human
Host:	Rabbit
Clonality:	Polyclonal
Conjugate:	This EML4 antibody is un-conjugated
Application:	Western Blotting (WB), Immunofluorescence (IF), Immunohistochemistry (IHC)

Product Details

Purpose:	EML4 Rabbit pAb
Immunogen:	Recombinant fusion protein containing a sequence corresponding to amino acids 360-560 of human EML4 (NP_061936.2).
Sequence:	GTFERGVGCL DFSKADSGVH LCVIDDSNEH MLTVWDWQKK AKGAEIKTTN EVVLAVEFHP TDANTIITCG KSHIFFWTWS GNSLTRKQGI FGKYEKPKFV QCLAFLGNGD VLTGDSGGVM LIWSKTTVEP TPGKGPKEGVY QISKQIKAHD GSVFTLCQMR NGMLLTGGGK DRKILWDHD LNPEREIEVP DQYGTIRAVA E
Isotype:	IgG
Cross-Reactivity:	Human, Mouse, Rat
Characteristics:	Polyclonal Antibodies

Product Details

Purification: Affinity purification

Target Details

Target: EML4

Alternative Name: EML4 ([EML4 Products](#))

Background: This gene is a member of the echinoderm microtubule associated protein-like family. The encoded WD-repeat protein may be involved in microtubule formation. Abnormal fusion of parts of this gene with portions of the anaplastic lymphoma receptor tyrosine kinase gene, which generates EML4-ALK fusion transcripts, is one of the primary mutations associated with non-small cell lung cancer. Alternative splicing of this gene results in two transcript variants.,EML4,C2orf2,ELP120,EMAP-4,EMAPL4,ROPP120,Cell Biology & Developmental Biology,Cytoskeleton,Microtubules,EML4

Molecular Weight: 102kDa/108kDa

Gene ID: 27436

UniProt: [Q9HC35](#)

Application Details

Application Notes: WB,1:500 - 1:2000,IHC,1:50 - 1:200,IF,1:50 - 1:200

Restrictions: For Research Use only

Handling

Format: Liquid

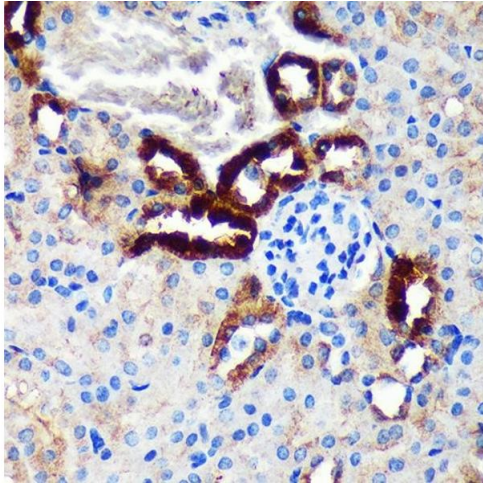
Buffer: PBS with 0.02 % sodium azide,50 % glycerol, pH 7.3.

Preservative: Sodium azide

Precaution of Use: This product contains Sodium azide: a POISONOUS AND HAZARDOUS SUBSTANCE which should be handled by trained staff only.

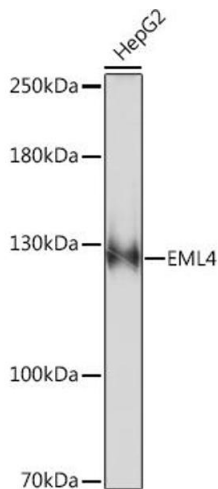
Storage: -20 °C

Storage Comment: Store at -20°C. Avoid freeze / thaw cycles.



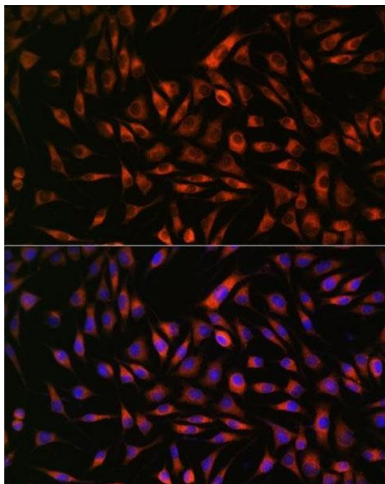
Immunohistochemistry

Image 1. Immunohistochemistry of paraffin-embedded Mouse kidney using EML4 Rabbit pAb (ABIN7266891) at dilution of 1:100 (40x lens). Perform microwave antigen retrieval with 10 mM PBS buffer pH 7.2 before commencing with IHC staining protocol.



Western Blotting

Image 2. Western blot analysis of extracts of HepG2 cells, using EML4 Rabbit pAb (ABIN7266891) at 1:1000 dilution. Secondary antibody: HRP Goat Anti-Rabbit IgG (H+L) (ABIN1684268 and ABIN3020597) at 1:10000 dilution. Lysates/proteins: 25 µg per lane. Blocking buffer: 3 % nonfat dry milk in TBST. Detection: ECL Basic Kit (RM00020). Exposure time: 90s.



Immunofluorescence

Image 3. Immunofluorescence analysis of L929 cells using EML4 antibody (ABIN7266891) at dilution of 1:100. Blue: DAPI for nuclear staining.

Please check the [product details page](#) for more images. Overall 5 images are available for ABIN7266891.