



[Go to Product page](#)

Datasheet for ABIN7266893

anti-ENTPD4 antibody (AA 350-470)

1 Image

Overview

Quantity:	100 µL
Target:	ENTPD4
Binding Specificity:	AA 350-470
Reactivity:	Human
Host:	Rabbit
Clonality:	Polyclonal
Conjugate:	This ENTPD4 antibody is un-conjugated
Application:	Western Blotting (WB)

Product Details

Purpose:	ENTPD4 Rabbit pAb
Immunogen:	Recombinant fusion protein containing a sequence corresponding to amino acids 350-470 of human ENTPD4 (NP_001122402.1).
Sequence:	LTPDMPYLDP CLPLDIKDEI QQNGQTIYLR GTGDFDLCRE TIQPFMNKTN ETQTSLNGVY QPPIHFQNSE FYGFSEFYIC TEDVLRMGGD YNAAKFTKAA KDYCATKWSI LRERFDRGLY A
Isotype:	IgG
Cross-Reactivity:	Human, Mouse, Rat
Characteristics:	Polyclonal Antibodies
Purification:	Affinity purification

Target Details

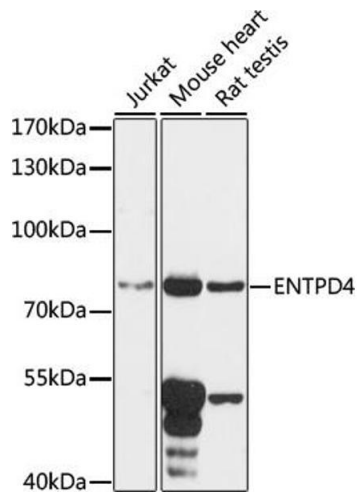
Target:	ENTPD4
Alternative Name:	ENTPD4 (ENTPD4 Products)
Background:	This gene encodes a member of the apyrase protein family. Apyrases are enzymes that catalyze the hydrolysis of nucleotide diphosphates and triphosphates in a calcium or magnesium-dependent manner. The encoded protein is an endo-apyrase and may play a role in salvaging nucleotides from lysosomes. Alternatively spliced transcript variants encoding multiple isoforms have been observed for this gene, and these isoforms may differ in divalent cation dependence and substrate specificity.,ENTPD4,LALP70,LAP70,LYSAL1,NTPDase-4,UDPase,Epigenetics & Nuclear Signaling,Cancer,Signal Transduction,Endocrine & Metabolism,Nucleotide metabolism,ENTPD4
Molecular Weight:	69kDa/70kDa
Gene ID:	9583
UniProt:	Q9Y227

Application Details

Application Notes:	WB,1:500 - 1:2000
Restrictions:	For Research Use only

Handling

Format:	Liquid
Buffer:	PBS with 0.02 % sodium azide,50 % glycerol, pH 7.3.
Preservative:	Sodium azide
Precaution of Use:	This product contains Sodium azide: a POISONOUS AND HAZARDOUS SUBSTANCE which should be handled by trained staff only.
Storage:	-20 °C
Storage Comment:	Store at -20°C. Avoid freeze / thaw cycles.



Western Blotting

Image 1. Western blot analysis of extracts of various cell lines, using ENTPD4 antibody (ABIN7266893) at 1:1000 dilution. Secondary antibody: HRP Goat Anti-Rabbit IgG (H+L) (ABIN1684268 and ABIN3020597) at 1:10000 dilution. Lysates/proteins: 25 µg per lane. Blocking buffer: 3 % nonfat dry milk in TBST. Detection: ECL Basic Kit (RM00020). Exposure time: 90s.