



[Go to Product page](#)

Datasheet for ABIN7266895
anti-ENTPD5 antibody

5 Images

Overview

Quantity:	100 µL
Target:	ENTPD5
Reactivity:	Human
Host:	Rabbit
Clonality:	Monoclonal
Conjugate:	This ENTPD5 antibody is un-conjugated
Application:	Western Blotting (WB), Immunohistochemistry (IHC)

Product Details

Purpose:	ENTPD5 Rabbit mAb
Immunogen:	A synthesized peptide derived from human ENTPD5
Isotype:	IgG
Cross-Reactivity:	Human, Mouse, Rat
Characteristics:	Monoclonal Antibodies
Purification:	Affinity purification

Target Details

Target:	ENTPD5
Alternative Name:	ENTPD5 (ENTPD5 Products)
Background:	The protein encoded by this gene is similar to E-type nucleotidases (NTPases)/ecto-

Target Details

ATPase/apyrases. NTPases, such as CD39, mediate catabolism of extracellular nucleotides. ENTPD5 contains 4 apyrase-conserved regions which is characteristic of NTPases. [provided by RefSeq, Jan 2009],CD39L4, NTPDase-5, PCPH,Cancer,Endocrine & Metabolism,Epigenetics & Nuclear Signaling,Nucleotide metabolism,Signal Transduction,Tumor biomarkers,ENTPD5

Molecular Weight: 47kDa

Gene ID: 957

UniProt: [O75356](#)

Application Details

Application Notes: WB,1:1000 - 1:3000,IHC,1:50 - 1:200

Restrictions: For Research Use only

Handling

Format: Liquid

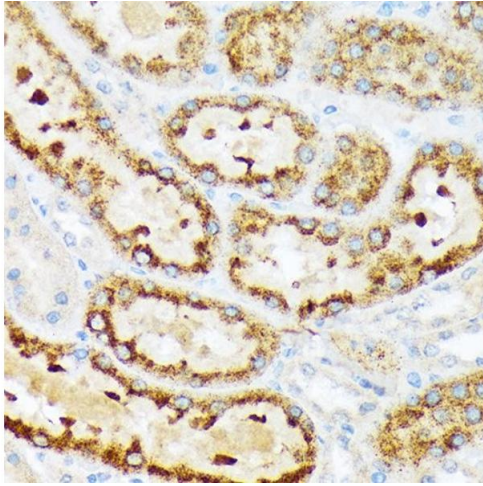
Buffer: PBS with 0.02 % sodium azide,0.05 % BSA,50 % glycerol, pH 7.3.

Preservative: Sodium azide

Precaution of Use: This product contains Sodium azide: a POISONOUS AND HAZARDOUS SUBSTANCE which should be handled by trained staff only.

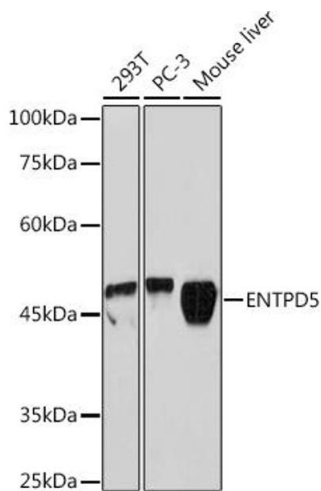
Storage: -20 °C

Storage Comment: Store at -20°C. Avoid freeze / thaw cycles.



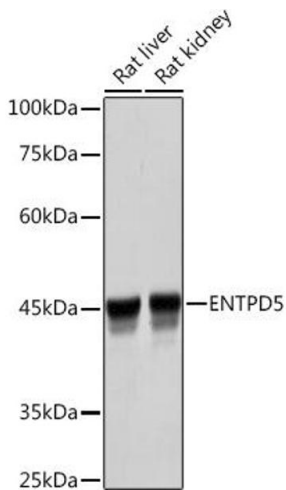
Immunohistochemistry

Image 1. Immunohistochemistry of paraffin-embedded rat kidney using ENTPD5 Rabbit mAb (ABIN7266895) at dilution of 1:100 (40x lens). Perform microwave antigen retrieval with 10 mM Tris/EDTA buffer pH 9.0 before commencing with IHC staining protocol.



Western Blotting

Image 2. Western blot analysis of extracts of various cell lines, using ENTPD5 Rabbit mAb (ABIN7266895) at 1:3000 dilution. Secondary antibody: HRP Goat Anti-Rabbit IgG (H+L) (ABIN1684268 and ABIN3020597) at 1:10000 dilution. Lysates/proteins: 25 µg per lane. Blocking buffer: 3 % nonfat dry milk in TBST. Detection: ECL Basic Kit (RM00020). Exposure time: 60s.



Western Blotting

Image 3. Western blot analysis of extracts of various cell lines, using ENTPD5 Rabbit mAb (ABIN7266895) at 1:3000 dilution. Secondary antibody: HRP Goat Anti-Rabbit IgG (H+L) (ABIN1684268 and ABIN3020597) at 1:10000 dilution. Lysates/proteins: 25 µg per lane. Blocking buffer: 3 % nonfat dry milk in TBST. Detection: ECL Basic Kit (RM00020). Exposure time: 1s.

Please check the [product details page](#) for more images. Overall 5 images are available for ABIN7266895.