



[Go to Product page](#)

Datasheet for ABIN7266904
anti-EDIL3 antibody (AA 350-450)

2 Images

Overview

Quantity:	100 µL
Target:	EDIL3 (DEL1)
Binding Specificity:	AA 350-450
Reactivity:	Human
Host:	Rabbit
Clonality:	Polyclonal
Conjugate:	This EDIL3 antibody is un-conjugated
Application:	Western Blotting (WB), Immunofluorescence (IF)

Product Details

Purpose:	EDIL3 Rabbit pAb
Immunogen:	A synthetic peptide corresponding to a sequence within amino acids 350-450 of human EDIL3 (NP_005702.3).
Sequence:	TWEPRKARLD KQGKVNAWTS GHNDQSQWLQ VDLLVPTKVT GIITQGAKDF GHVQFVGSYK LAYSNDGEHW TVYQDEKQRK DKVFQGNFDN DTHRKNVIDP P
Isotype:	IgG
Cross-Reactivity:	Human, Mouse
Characteristics:	Polyclonal Antibodies
Purification:	Affinity purification

Target Details

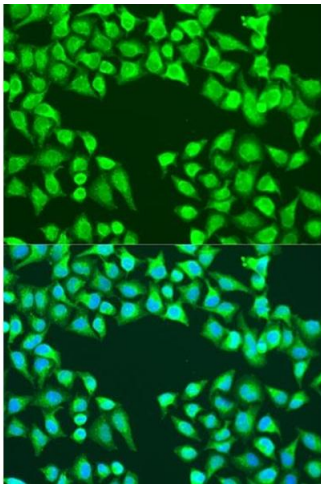
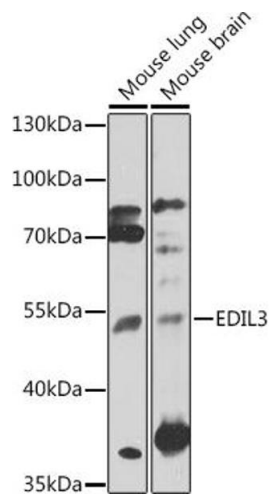
Target:	EDIL3 (DEL1)
Alternative Name:	EDIL3 (DEL1 Products)
Background:	The protein encoded by this gene is an integrin ligand. It plays an important role in mediating angiogenesis and may be important in vessel wall remodeling and development. It also influences endothelial cell behavior.,EDIL3,DEL1,Signal Transduction,Cell Biology & Developmental Biology,Cell Adhesion,Cell Adhesion Molecules,Cytoskeleton,Cardiovascular,Angiogenesis,EDIL3
Molecular Weight:	52kDa/53kDa
Gene ID:	10085
UniProt:	O43854

Application Details

Application Notes:	WB,1:500 - 1:2000,IF,1:50 - 1:200
Restrictions:	For Research Use only

Handling

Format:	Liquid
Buffer:	PBS with 0.02 % sodium azide,50 % glycerol, pH 7.3.
Preservative:	Sodium azide
Precaution of Use:	This product contains Sodium azide: a POISONOUS AND HAZARDOUS SUBSTANCE which should be handled by trained staff only.
Storage:	-20 °C
Storage Comment:	Store at -20°C. Avoid freeze / thaw cycles.



Western Blotting

Image 1. Western blot analysis of extracts of various cell lines, using EDIL3 antibody (ABIN7266904) at 1:1000 dilution. Secondary antibody: HRP Goat Anti-Rabbit IgG (H+L) (ABIN1684268 and ABIN3020597) at 1:10000 dilution. Lysates/proteins: 25 µg per lane. Blocking buffer: 3 % nonfat dry milk in TBST. Detection: ECL Enhanced Kit (RM00021). Exposure time: 30s.

Immunofluorescence

Image 2. Immunofluorescence analysis of U2OS cells using EDIL3 antibody (ABIN7266904) at dilution of 1:100. Blue: DAPI for nuclear staining.