

Datasheet for ABIN7266911

**anti-EHD1 antibody****2** Images[Go to Product page](#)

## Overview

Quantity:	100 µL
Target:	EHD1
Reactivity:	Human
Host:	Rabbit
Clonality:	Monoclonal
Conjugate:	This EHD1 antibody is un-conjugated
Application:	Western Blotting (WB), Immunohistochemistry (IHC)

## Product Details

Purpose:	EHD1 Rabbit mAb
Immunogen:	A synthesized peptide derived from human EHD1
Isotype:	IgG
Cross-Reactivity:	Human, Mouse, Rat
Characteristics:	Monoclonal Antibodies
Purification:	Affinity purification

## Target Details

Target:	EHD1
Alternative Name:	EHD1 ( <a href="#">EHD1 Products</a> )
Background:	This gene belongs to a highly conserved gene family encoding EPS15 homology (EH) domain-

## Target Details

containing proteins. The protein-binding EH domain was first noted in EPS15, a substrate for the epidermal growth factor receptor. The EH domain has been shown to be an important motif in proteins involved in protein-protein interactions and in intracellular sorting. The protein encoded by this gene is thought to play a role in the endocytosis of IGF1 receptors. Alternatively spliced transcript variants have been found for this gene. [provided by RefSeq, Sep 2013],H-PAST, HPAST1, PAST, PAST1,Calcium Signaling,Cancer,Cardiovascular,Endocrine & Metabolism,Insulin Receptor Signaling Pathway,Lipid Metabolism,Lipid Metabolism\_Cholesterol Metabolism,Lipids,Neuroscience,Signal Transduction,EHD1

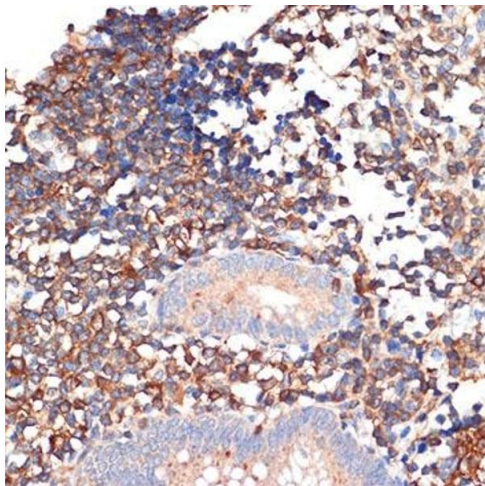
Molecular Weight:	61kDa
Gene ID:	10938
UniProt:	<a href="#">Q9H4M9</a>
Pathways:	<a href="#">Regulation of Muscle Cell Differentiation</a> , <a href="#">Skeletal Muscle Fiber Development</a>

## Application Details

Application Notes:	WB,1:500 - 1:2000,IHC,1:50 - 1:200
Restrictions:	For Research Use only

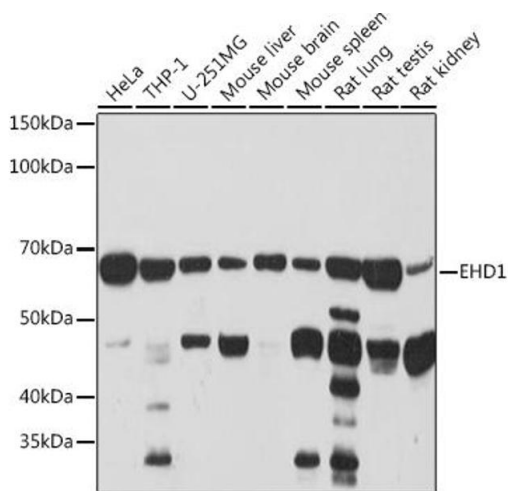
## Handling

Format:	Liquid
Buffer:	PBS with 0.02 % sodium azide,0.05 % BSA,50 % glycerol, pH 7.3.
Preservative:	Sodium azide
Precaution of Use:	This product contains Sodium azide: a POISONOUS AND HAZARDOUS SUBSTANCE which should be handled by trained staff only.
Storage:	-20 °C
Storage Comment:	Store at -20°C. Avoid freeze / thaw cycles.



### Immunohistochemistry

**Image 1.** Immunohistochemistry of paraffin-embedded human appendix using EHD1 Rabbit mAb (ABIN7266911) at dilution of 1:100 (40x lens). Perform microwave antigen retrieval with 10 mM Tris/EDTA buffer pH 9.0 before commencing with IHC staining protocol.



### Western Blotting

**Image 2.** Western blot analysis of extracts of various cell lines, using EHD1 Rabbit mAb (ABIN7266911) at 1:1000 dilution. Secondary antibody: HRP Goat Anti-Rabbit IgG (H+L) (ABIN1684268 and ABIN3020597) at 1:10000 dilution. Lysates/proteins: 25 µg per lane. Blocking buffer: 3 % nonfat dry milk in TBST. Detection: ECL Basic Kit (RM00020). Exposure time: 90s.