



[Go to Product page](#)

Datasheet for ABIN7266912

anti-ELANE antibody

3 Images

Overview

Quantity:	100 µL
Target:	ELANE
Reactivity:	Human
Host:	Rabbit
Clonality:	Monoclonal
Conjugate:	This ELANE antibody is un-conjugated
Application:	Western Blotting (WB), Immunohistochemistry (IHC), Immunofluorescence (IF)

Product Details

Purpose:	Neutrophil Elastase (ELANE) Rabbit mAb
Immunogen:	A synthesized peptide derived from human Neutrophil Elastase (ELANE)
Isotype:	IgG
Cross-Reactivity:	Human, Mouse
Characteristics:	Monoclonal Antibodies
Purification:	Affinity purification

Target Details

Target:	ELANE
Alternative Name:	ELANE (ELANE Products)
Background:	Elastases form a subfamily of serine proteases that hydrolyze many proteins in addition to

Target Details

elastin. Humans have six elastase genes which encode structurally similar proteins. The encoded preproprotein is proteolytically processed to generate the active protease. Following activation, this protease hydrolyzes proteins within specialized neutrophil lysosomes, called azurophil granules, as well as proteins of the extracellular matrix. The enzyme may play a role in degenerative and inflammatory diseases through proteolysis of collagen-IV and elastin. This protein also degrades the outer membrane protein A (OmpA) of E. coli as well as the virulence factors of such bacteria as Shigella, Salmonella and Yersinia. Mutations in this gene are associated with cyclic neutropenia and severe congenital neutropenia (SCN). This gene is present in a gene cluster on chromosome 19. [provided by RefSeq, Jan 2016],ELA2, GE, HLE, HNE, NE, PMN-E, SCN1,Cell Biology & Developmental Biology,Cytoskeleton,Extracellular Matrix,Signal Transduction,ELANE

Molecular Weight: 29kDa

Gene ID: 1991

UniProt: [P08246](#)

Application Details

Application Notes: WB,1:500 - 1:2000,IHC,1:50 - 1:200,IF,1:50 - 1:200

Restrictions: For Research Use only

Handling

Format: Liquid

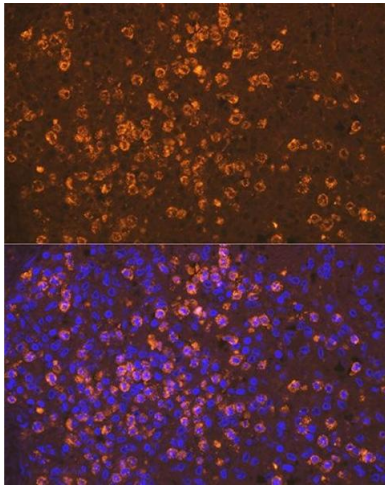
Buffer: PBS with 0.02 % sodium azide,0.05 % BSA,50 % glycerol, pH 7.3.

Preservative: Sodium azide

Precaution of Use: This product contains Sodium azide: a POISONOUS AND HAZARDOUS SUBSTANCE which should be handled by trained staff only.

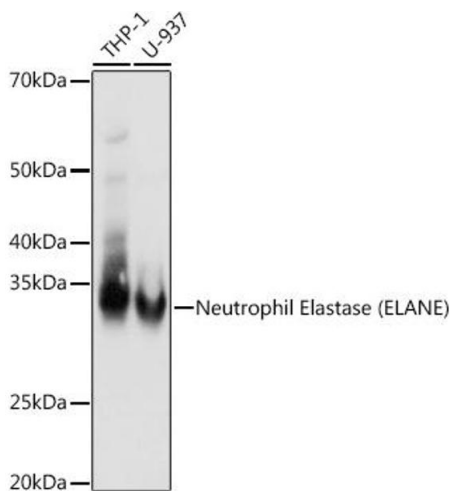
Storage: -20 °C

Storage Comment: Store at -20°C. Avoid freeze / thaw cycles.



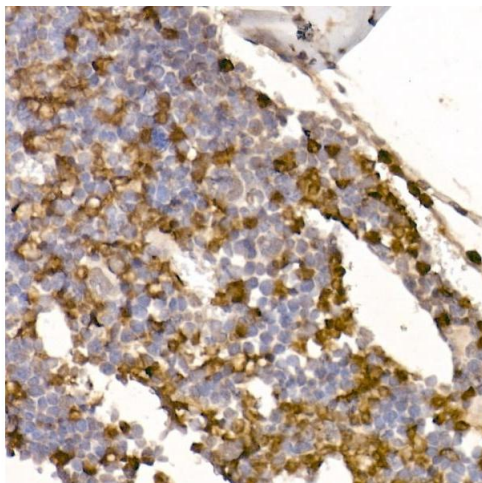
Immunofluorescence

Image 1. Immunofluorescence analysis of human spleen using Neutrophil Elastase (ELANE) Rabbit mAb (ABIN7266912) at dilution of 1:100 (40x lens). Blue: DAPI for nuclear staining.



Western Blotting

Image 2. Western blot analysis of extracts of various cell lines, using Neutrophil Elastase (ELANE) antibody (ABIN7266912) at 1:1000 dilution. Secondary antibody: HRP Goat Anti-Rabbit IgG (H+L) (ABIN1684268 and ABIN3020597) at 1:10000 dilution. Lysates/proteins: 25 µg per lane. Blocking buffer: 3% nonfat dry milk in TBST. Detection: ECL Basic Kit (RM00020). Exposure time: 3s.



Immunohistochemistry

Image 3. Immunohistochemistry of paraffin-embedded Mouse bone marrow using Neutrophil Elastase (ELANE) antibody (ABIN7266912) at dilution of 1:100 (40x lens). Perform microwave antigen retrieval with 10 mM Tris/EDTA buffer pH 9.0 before commencing with IHC staining protocol.