



[Go to Product page](#)

Datasheet for ABIN7266916
anti-ETFB antibody (AA 80-230)

4 Images

Overview

Quantity:	100 µL
Target:	ETFB
Binding Specificity:	AA 80-230
Reactivity:	Human
Host:	Rabbit
Clonality:	Polyclonal
Conjugate:	This ETFB antibody is un-conjugated
Application:	Western Blotting (WB), Immunofluorescence (IF)

Product Details

Purpose:	ETFB Rabbit pAb
Immunogen:	Recombinant fusion protein containing a sequence corresponding to amino acids 80-230 of human ETFB (NP_001976.1).
Sequence:	AMGADRGIHV EVPPAEAERL GPLQVARVLA KLAEEKVDL VLLGKQAIDD DCNQTGQMTA GFLDWPQGTF ASQVTLEGDK LKVEREIDGG LETLRLKLPV VVTADLRLNE PRYATLPNIM KAKKKKIEVI KPGDLGVDLT SKLSVISVED P
Isotype:	IgG
Cross-Reactivity:	Human, Mouse, Rat
Characteristics:	Polyclonal Antibodies
Purification:	Affinity purification

Target Details

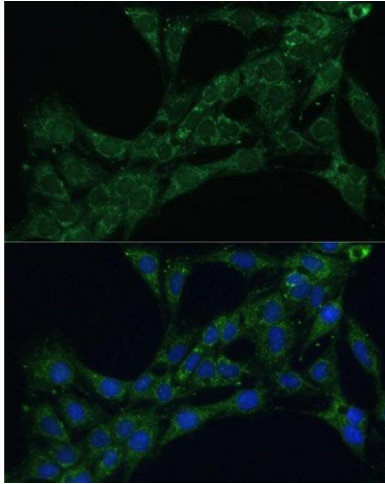
Target:	ETF _B
Alternative Name:	ETF _B (ETF_B Products)
Background:	<p>This gene encodes electron-transfer-flavoprotein, beta polypeptide, which shuttles electrons between primary flavoprotein dehydrogenases involved in mitochondrial fatty acid and amino acid catabolism and the membrane-bound electron transfer flavoprotein ubiquinone oxidoreductase. The gene deficiencies have been implicated in type II glutaricaciduria. Alternatively spliced transcript variants have been found for this gene.,ETF_B,FP585,MADD,Cancer,Signal Transduction,Endocrine & Metabolism,Mitochondrial metabolism,Mitochondrial markers,Oxidative phosphorylation,ETF_B</p>
Molecular Weight:	27kDa/37kDa
Gene ID:	2109
UniProt:	P38117

Application Details

Application Notes:	WB,1:500 - 1:2000,IF,1:50 - 1:100
Restrictions:	For Research Use only

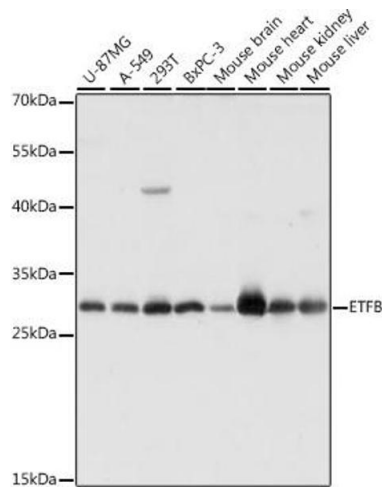
Handling

Format:	Liquid
Buffer:	PBS with 0.02 % sodium azide,50 % glycerol, pH 7.3.
Preservative:	Sodium azide
Precaution of Use:	This product contains Sodium azide: a POISONOUS AND HAZARDOUS SUBSTANCE which should be handled by trained staff only.
Storage:	-20 °C
Storage Comment:	Store at -20°C. Avoid freeze / thaw cycles.



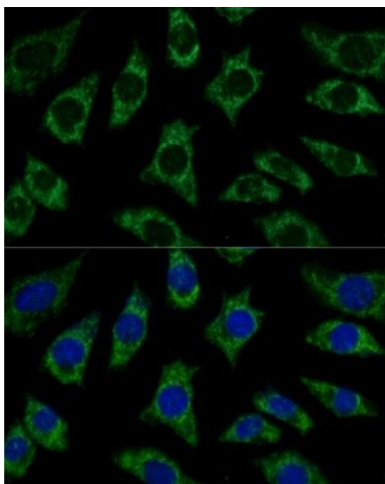
Immunofluorescence

Image 1. Immunofluorescence analysis of C6 cells using ETFB Polyclonal Antibody (ABIN7266916) at dilution of 1:100 (40x lens). Blue: DAPI for nuclear staining.



Western Blotting

Image 2. Western blot analysis of extracts of various cell lines, using ETFB antibody (ABIN7266916) at 1:1000 dilution. Secondary antibody: HRP Goat Anti-Rabbit IgG (H+L) (ABIN1684268 and ABIN3020597) at 1:10000 dilution. Lysates/proteins: 25 µg per lane. Blocking buffer: 3 % nonfat dry milk in TBST. Detection: ECL Basic Kit (RM00020). Exposure time: 5s.



Immunofluorescence

Image 3. Immunofluorescence analysis of L929 cells using ETFB Polyclonal Antibody (ABIN7266916) at dilution of 1:100 (40x lens). Blue: DAPI for nuclear staining.

Please check the [product details page](#) for more images. Overall 4 images are available for ABIN7266916.