



[Go to Product page](#)

Datasheet for ABIN7266920
anti-ELMOD2 antibody (AA 5-95)

1 Image

Overview

Quantity:	100 µL
Target:	ELMOD2
Binding Specificity:	AA 5-95
Reactivity:	Human
Host:	Rabbit
Clonality:	Polyclonal
Conjugate:	This ELMOD2 antibody is un-conjugated
Application:	Western Blotting (WB)

Product Details

Purpose:	ELMOD2 Rabbit pAb
Immunogen:	Recombinant fusion protein containing a sequence corresponding to amino acids 5-95 of human ELMOD2 (NP_714913.1).
Sequence:	LWEFFYGHFF RFWMKWLLRQ MTGKCELQRI FDTYVGAQRT HRIENSLTYS KNKVLQKATH VVQSEVDKYV DDIMKEKNIN PEKDASFKIC M
Isotype:	IgG
Cross-Reactivity:	Rat
Characteristics:	Polyclonal Antibodies
Purification:	Affinity purification

Target Details

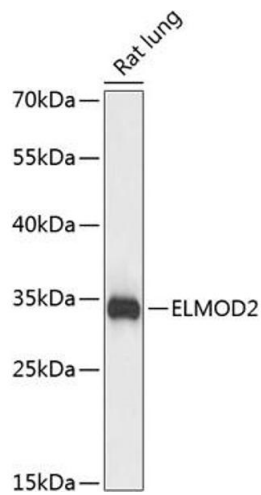
Target:	ELMOD2
Alternative Name:	ELMOD2 (ELMOD2 Products)
Background:	This gene encodes one of six engulfment and motility (ELMO) domain-containing proteins. This gene is thought to play a role in antiviral responses. Mutations in this gene may be involved in the cause of familial idiopathic pulmonary fibrosis.,ELMOD2,9830169G11Rik,Signal Transduction,G protein signaling,Signal Transduction,Cell Biology & Developmental Biology,Apoptosis,Immunology & Inflammation,Cell Intrinsic Innate Immunity Signaling Pathway,ELMOD2
Molecular Weight:	34kDa
Gene ID:	255520
UniProt:	Q8IZ81

Application Details

Application Notes:	WB,1:500 - 1:2000
Restrictions:	For Research Use only

Handling

Format:	Liquid
Buffer:	PBS with 0.02 % sodium azide,50 % glycerol, pH 7.3.
Preservative:	Sodium azide
Precaution of Use:	This product contains Sodium azide: a POISONOUS AND HAZARDOUS SUBSTANCE which should be handled by trained staff only.
Storage:	-20 °C
Storage Comment:	Store at -20°C. Avoid freeze / thaw cycles.



Western Blotting

Image 1. Western blot analysis of extracts of rat lung, using ELMOD2 antibody at 1:3000 dilution. Secondary antibody: HRP Goat Anti-Rabbit IgG (H+L) (ABIN1684268 and ABIN3020597) at 1:10000 dilution. Lysates/proteins: 25 µg per lane. Blocking buffer: 3% nonfat dry milk in TBST. Detection: ECL Basic Kit (RM00020). Exposure time: 5s.