



[Go to Product page](#)

Datasheet for ABIN7266921  
**anti-ELMOD2 antibody**

1 Image

### Overview

Quantity:	100 µL
Target:	ELMOD2
Reactivity:	Mouse
Host:	Rabbit
Clonality:	Polyclonal
Conjugate:	This ELMOD2 antibody is un-conjugated
Application:	Western Blotting (WB)

### Product Details

Purpose:	ELMOD2 Rabbit pAb
Immunogen:	Recombinant protein of mouse ELMOD2
Isotype:	IgG
Cross-Reactivity:	Mouse
Characteristics:	Polyclonal Antibodies
Purification:	Affinity purification

### Target Details

Target:	ELMOD2
Alternative Name:	ELMOD2 ( <a href="#">ELMOD2 Products</a> )
Background:	This gene encodes one of six engulfment and motility (ELMO) domain-containing proteins. This

## Target Details

gene is thought to play a role in antiviral responses. Mutations in this gene may be involved in the cause of familial idiopathic pulmonary fibrosis.,ELMOD2,9830169G11Rik,Signal Transduction,G protein signaling,Signal Transduction,Cell Biology & Developmental Biology,Apoptosis,Immunology & Inflammation,Cell Intrinsic Innate Immunity Signaling Pathway,ELMOD2

Molecular Weight: 34kDa

Gene ID: 244548

## Application Details

Application Notes: WB,1:500 - 1:2000

Restrictions: For Research Use only

## Handling

Format: Liquid

Buffer: PBS with 0.02 % sodium azide,50 % glycerol, pH 7.3.

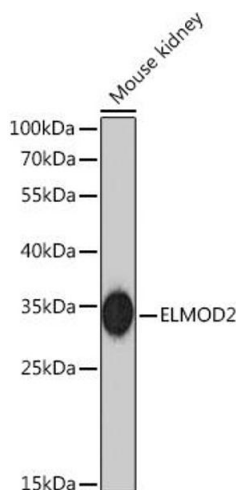
Preservative: Sodium azide

Precaution of Use: This product contains Sodium azide: a POISONOUS AND HAZARDOUS SUBSTANCE which should be handled by trained staff only.

Storage: -20 °C

Storage Comment: Store at -20°C. Avoid freeze / thaw cycles.

## Images



### Western Blotting

**Image 1.** Western blot analysis of extracts of Mouse kidney, using ELMOD2 Rabbit pAb at 1:1000 dilution. Secondary antibody: HRP Goat Anti-Rabbit IgG (H+L) (ABIN1684268 and ABIN3020597) at 1:10000 dilution. Lysates/proteins: 25 µg per lane. Blocking buffer: 3 % nonfat dry milk in TBST. Detection: ECL Basic Kit (RM00020). Exposure time: 90s.