



[Go to Product page](#)

Datasheet for ABIN7266928  
**anti-ELOVL5 antibody (AA 247-326)**

1 Image

Overview

Quantity:	100 µL
Target:	ELOVL5
Binding Specificity:	AA 247-326
Reactivity:	Human
Host:	Rabbit
Clonality:	Polyclonal
Conjugate:	This ELOVL5 antibody is un-conjugated
Application:	Western Blotting (WB)

Product Details

Purpose:	ELOVL5 Rabbit pAb
Immunogen:	Recombinant fusion protein containing a sequence corresponding to amino acids 247-326 of human ELOVL5 (NP_001229757.1).
Sequence:	GVIWPCTFPL GWLYFQIGYM ISLIALFTNF YIQTYNKKGA SRRKDHLKDH QNGSMAAVNG HTNSFSPLEN NVKPRKLRKD
Isotype:	IgG
Cross-Reactivity:	Human
Characteristics:	Polyclonal Antibodies
Purification:	Affinity purification

## Target Details

---

Target:	ELOVL5
Alternative Name:	ELOVL5 ( <a href="#">ELOVL5 Products</a> )
Background:	<p>This gene belongs to the ELO family. It is highly expressed in the adrenal gland and testis, and encodes a multi-pass membrane protein that is localized in the endoplasmic reticulum. This protein is involved in the elongation of long-chain polyunsaturated fatty acids. Mutations in this gene have been associated with spinocerebellar ataxia-38 (SCA38). Alternatively spliced transcript variants have been found for this</p> <p>gene.,ELOVL5,HELO1,SCA38,dJ483K16.1,Cancer,Signal Transduction,Endocrine &amp; Metabolism,Lipid Metabolism,Cardiovascular,Lipids,Fatty Acids,ELOVL5</p>
Molecular Weight:	9kDa/35kDa/38kDa
Gene ID:	60481
UniProt:	<a href="#">Q9NYP7</a>

## Application Details

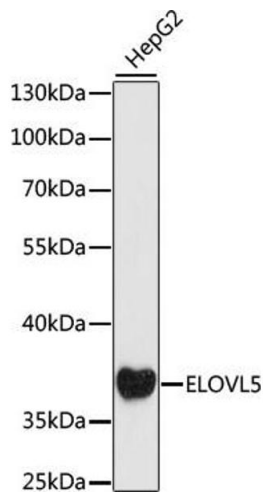
---

Application Notes:	WB,1:500 - 1:2000
Restrictions:	For Research Use only

## Handling

---

Format:	Liquid
Buffer:	PBS with 0.02 % sodium azide,50 % glycerol, pH 7.3.
Preservative:	Sodium azide
Precaution of Use:	This product contains Sodium azide: a POISONOUS AND HAZARDOUS SUBSTANCE which should be handled by trained staff only.
Storage:	-20 °C
Storage Comment:	Store at -20°C. Avoid freeze / thaw cycles.



### Western Blotting

**Image 1.** Western blot analysis of extracts of HepG2 cells, using ELOVL5 antibody (ABIN7266928) at 1:1000 dilution. Secondary antibody: HRP Goat Anti-Rabbit IgG (H+L) (ABIN1684268 and ABIN3020597) at 1:10000 dilution. Lysates/proteins: 25 µg per lane. Blocking buffer: 3 % nonfat dry milk in TBST. Detection: ECL Basic Kit (RM00020). Exposure time: 90s.