



[Go to Product page](#)

Datasheet for ABIN7266930
anti-EFS antibody (AA 60-190)

1 Image

Overview

Quantity:	100 µL
Target:	EFS
Binding Specificity:	AA 60-190
Reactivity:	Human
Host:	Rabbit
Clonality:	Polyclonal
Conjugate:	This EFS antibody is un-conjugated
Application:	Western Blotting (WB)

Product Details

Purpose:	EFS Rabbit pAb
Immunogen:	Recombinant fusion protein containing a sequence corresponding to amino acids 60-190 of human EFS (NP_115835.1).
Sequence:	TALRVPSSGP YDCPASFSHP LTRVAPQPPG EDDAPYDVPL TPKPPAELEP DLEWEGGREP GPPIYAAPSN LKRASALLNL YEAPEELLAD GEGGGTDEGI YDVPLLGPEA PPSPEPPGAL ASHDQDTLAQ L
Isotype:	IgG
Cross-Reactivity:	Mouse
Characteristics:	Polyclonal Antibodies
Purification:	Affinity purification

Target Details

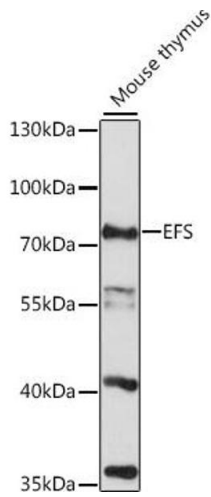
Target:	EFS
Alternative Name:	EFS (EFS Products)
Background:	The longest protein isoform encoded by this gene contains an SH3 domain, which is known to be important in intracellular signal transduction. The protein encoded by a similar gene in mice was shown to bind to SH3 domains of protein-tyrosine kinases. The function of this gene is unknown. Three alternatively spliced variants encoding different isoforms have been described for this gene.,EFS,CAS3,CASS3,EFS1,EFS2,HEFS,SIN,Signal Transduction,EFS
Molecular Weight:	40kDa/48kDa/58kDa
Gene ID:	10278
UniProt:	O43281

Application Details

Application Notes:	WB,1:500 - 1:2000
Restrictions:	For Research Use only

Handling

Format:	Liquid
Buffer:	PBS with 0.02 % sodium azide,50 % glycerol, pH 7.3.
Preservative:	Sodium azide
Precaution of Use:	This product contains Sodium azide: a POISONOUS AND HAZARDOUS SUBSTANCE which should be handled by trained staff only.
Storage:	-20 °C
Storage Comment:	Store at -20°C. Avoid freeze / thaw cycles.



Western Blotting

Image 1. Western blot analysis of extracts of mouse thymus, using EFS antibody (ABIN7266930) at 1:1000 dilution. Secondary antibody: HRP Goat Anti-Rabbit IgG (H+L) (ABIN1684268 and ABIN3020597) at 1:10000 dilution. Lysates/proteins: 25 µg per lane. Blocking buffer: 3 % nonfat dry milk in TBST. Detection: ECL Basic Kit (RM00020). Exposure time: 90s.