

Datasheet for ABIN7266940
anti-Endonuclease G antibody[Go to Product page](#)

1 Image

Overview

Quantity:	100 µL
Target:	Endonuclease G (ENDOG)
Reactivity:	Human
Host:	Rabbit
Clonality:	Monoclonal
Conjugate:	This Endonuclease G antibody is un-conjugated
Application:	Western Blotting (WB)

Product Details

Purpose:	Endo G Rabbit mAb
Immunogen:	A synthesized peptide derived from human Endo G
Isotype:	IgG
Cross-Reactivity:	Human, Mouse, Rat
Characteristics:	Monoclonal Antibodies
Purification:	Affinity purification

Target Details

Target:	Endonuclease G (ENDOG)
Alternative Name:	ENDOG (ENDOG Products)
Background:	The protein encoded by this gene is a nuclear encoded endonuclease that is localized in the

Target Details

mitochondrion. The encoded protein is widely distributed among animals and cleaves DNA at GC tracts. This protein is capable of generating the RNA primers required by DNA polymerase gamma to initiate replication of mitochondrial DNA. [provided by RefSeq, Jul 2008],ENDOG, endonuclease G,Apoptosis,Apoptosis_Mitochondrial Control of Apoptosis,Cancer,Cell Biology & Developmental Biology,Cell Cycle,Endocrine & Metabolism,Epigenetics & Nuclear Signaling,Invasion and Metastasis,Mitochondrial metabolism,ENDOG

Molecular Weight: 30kDa

Gene ID: 2021

UniProt: [Q14249](#)

Pathways: [Apoptosis](#)

Application Details

Application Notes: WB,1:500 - 1:2000

Restrictions: For Research Use only

Handling

Format: Liquid

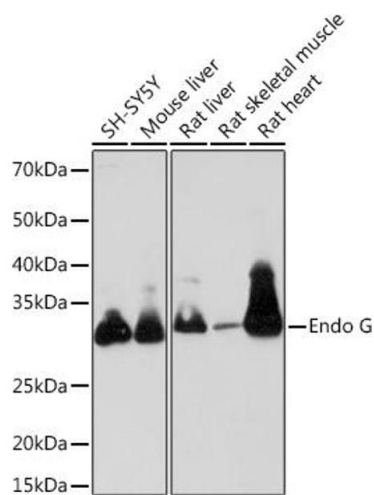
Buffer: PBS with 0.02 % sodium azide,0.05 % BSA,50 % glycerol, pH 7.3.

Preservative: Sodium azide

Precaution of Use: This product contains Sodium azide: a POISONOUS AND HAZARDOUS SUBSTANCE which should be handled by trained staff only.

Storage: -20 °C

Storage Comment: Store at -20°C. Avoid freeze / thaw cycles.



Western Blotting

Image 1. Western blot analysis of extracts of various cell lines, using Endo G Rabbit mAb (ABIN7266940) at 1:1000 dilution. Secondary antibody: HRP Goat Anti-Rabbit IgG (H+L) (ABIN1684268 and ABIN3020597) at 1:10000 dilution. Lysates/proteins: 25 µg per lane. Blocking buffer: 3 % nonfat dry milk in TBST. Detection: ECL Basic Kit (RM00020). Exposure time: 90s.