



[Go to Product page](#)

Datasheet for ABIN7266941

anti-ERAP1 antibody

4 Images

Overview

Quantity:	100 µL
Target:	ERAP1
Reactivity:	Human
Host:	Rabbit
Clonality:	Monoclonal
Conjugate:	This ERAP1 antibody is un-conjugated
Application:	Western Blotting (WB), Immunohistochemistry (IHC)

Product Details

Purpose:	ERAP1 Rabbit mAb
Immunogen:	A synthesized peptide derived from human ERAP1
Isotype:	IgG
Cross-Reactivity:	Human, Mouse, Rat
Characteristics:	Monoclonal Antibodies
Purification:	Affinity purification

Target Details

Target:	ERAP1
Alternative Name:	ERAP1 (ERAP1 Products)
Background:	The protein encoded by this gene is an aminopeptidase involved in trimming HLA class I-

Target Details

binding precursors so that they can be presented on MHC class I molecules. The encoded protein acts as a monomer or as a heterodimer with ERAP2. This protein may also be involved in blood pressure regulation by inactivation of angiotensin II. Three transcript variants encoding two different isoforms have been found for this gene.[provided by RefSeq, Oct 2010],A-LAP, ALAP, APPILS, ARTS-1, ARTS1, ERAAP, ERAAP1, PILS-AP, PILSAP,Angiogenesis,Blood,Blood_Blood Pressure regulation,Cardiovascular,Cell Biology & Developmental Biology,Cytokines,Growth factors,Immunology & Inflammation,Ubiquitin,ERAP1

Molecular Weight: 100kDa

Gene ID: 51752

UniProt: [Q9NZ08](#)

Application Details

Application Notes: WB,1:500 - 1:2000,IHC,1:50 - 1:200

Restrictions: For Research Use only

Handling

Format: Liquid

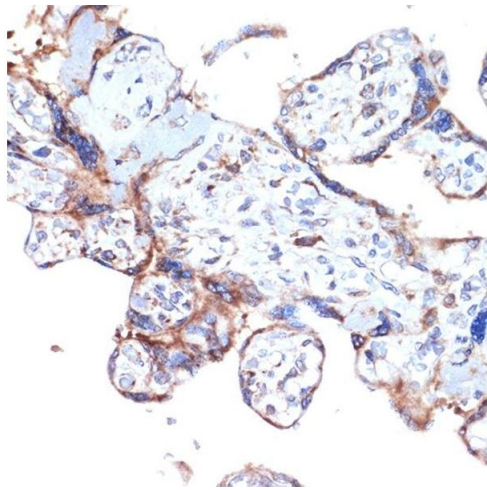
Buffer: PBS with 0.02 % sodium azide,0.05 % BSA,50 % glycerol, pH 7.3.

Preservative: Sodium azide

Precaution of Use: This product contains Sodium azide: a POISONOUS AND HAZARDOUS SUBSTANCE which should be handled by trained staff only.

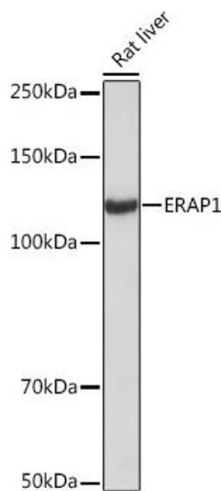
Storage: -20 °C

Storage Comment: Store at -20°C. Avoid freeze / thaw cycles.



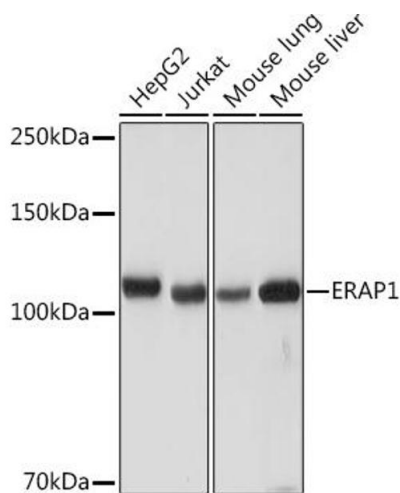
Immunohistochemistry

Image 1. Immunohistochemistry of paraffin-embedded human placenta using ER Rabbit mAb (ABIN7266941) at dilution of 1:100 (40x lens). Perform microwave antigen retrieval with 10 mM Tris/EDTA buffer pH 9.0 before commencing with IHC staining protocol.



Western Blotting

Image 2. Western blot analysis of extracts of Rat liver, using ER Rabbit mAb (ABIN7266941) at 1:1000 dilution. Secondary antibody: HRP Goat Anti-Rabbit IgG (H+L) (ABIN1684268 and ABIN3020597) at 1:10000 dilution. Lysates/proteins: 25 µg per lane. Blocking buffer: 3% nonfat dry milk in TBST. Detection: ECL Basic Kit (RM00020). Exposure time: 30s.



Western Blotting

Image 3. Western blot analysis of extracts of various cell lines, using ER Rabbit mAb (ABIN7266941) at 1:1000 dilution. Secondary antibody: HRP Goat Anti-Rabbit IgG (H+L) (ABIN1684268 and ABIN3020597) at 1:10000 dilution. Lysates/proteins: 25 µg per lane. Blocking buffer: 3% nonfat dry milk in TBST. Detection: ECL Basic Kit (RM00020). Exposure time: 10s.

Please check the [product details page](#) for more images. Overall 4 images are available for ABIN7266941.