



[Go to Product page](#)

Datasheet for ABIN7266946
anti-ERN1 antibody (pSer724)

1 Image

Overview

Quantity:	100 µL
Target:	ERN1
Binding Specificity:	pSer724
Reactivity:	Human
Host:	Rabbit
Clonality:	Polyclonal
Conjugate:	This ERN1 antibody is un-conjugated
Application:	Western Blotting (WB)

Product Details

Purpose:	Phospho-IRE1-S724 Rabbit pAb
Immunogen:	A phospho specific peptide corresponding to residues surrounding s724 of human IRE1alpha.
Isotype:	IgG
Cross-Reactivity:	Human, Mouse, Rat
Characteristics:	Phosphorylated Antibodies
Purification:	Affinity purification

Target Details

Target:	ERN1
Alternative Name:	ERN1 (ERN1 Products)

Target Details

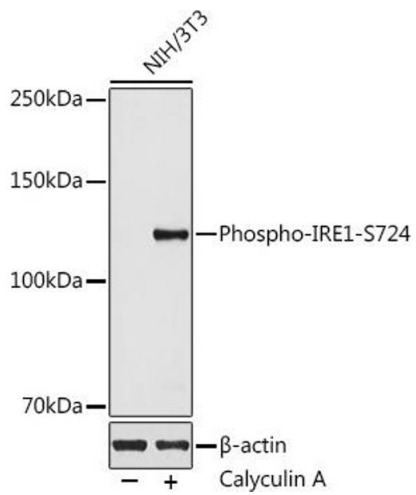
Background:	The protein encoded by this gene is the ER to nucleus signalling 1 protein, a human homologue of the yeast Ire1 gene product. This protein possesses intrinsic kinase activity and an endoribonuclease activity and it is important in altering gene expression as a response to endoplasmic reticulum-based stress signals.,ERN1,IRE1,IRE1P,IRE1a,hIRE1p,Signal Transduction,Kinase,Cell Biology & Developmental Biology,Apoptosis,Neuroscience,Neurodegenerative Diseases,Protein phosphorylation,ERN1
Molecular Weight:	6kDa/109kDa
Gene ID:	2081
UniProt:	O75460
Pathways:	ER-Nucleus Signaling , Unfolded Protein Response

Application Details

Application Notes:	WB,1:500 - 1:2000
Restrictions:	For Research Use only

Handling

Format:	Liquid
Buffer:	PBS with 0.02 % sodium azide,50 % glycerol, pH 7.3.
Preservative:	Sodium azide
Precaution of Use:	This product contains Sodium azide: a POISONOUS AND HAZARDOUS SUBSTANCE which should be handled by trained staff only.
Storage:	-20 °C
Storage Comment:	Store at -20°C. Avoid freeze / thaw cycles.



Western Blotting

Image 1. Western blot analysis of extracts of NIH/3T3 cells, using Phospho-IRE1-S724 antibody at 1:500 dilution. NIH/3T3 cells were treated by Calyculin A (100 nM) at 37 °C for 30 minutes after serum-starvation overnight. Secondary antibody: HRP Goat Anti-Rabbit IgG (H+L) (ABIN1684268 and ABIN3020597) at 1:10000 dilution. Lysates/proteins: 25 µg per lane. Blocking buffer: 3% nonfat dry milk in TBST. Detection: ECL Basic Kit (RM00020). Exposure time: 90s.