

Datasheet for ABIN7266947  
**anti-Ensa antibody (AA 1-100)**[Go to Product page](#)

## 1 Image

## Overview

Quantity:	100 µL
Target:	Ensa (ENSA)
Binding Specificity:	AA 1-100
Reactivity:	Human
Host:	Rabbit
Clonality:	Polyclonal
Conjugate:	This Ensa antibody is un-conjugated
Application:	Western Blotting (WB)

## Product Details

Purpose:	ENSA Rabbit pAb
Immunogen:	A synthetic peptide corresponding to a sequence within amino acids 1-100 of human ENSA (NP_996929.1).
Sequence:	MAGGLGCDVC YWFVEDTQEK EGILPERAEE AKLKAKYPSL GQKPGGSDFL MKRLQKGQKY FDSGDYNMAK AKMKNKQLPS AGPDKNLVTG DHIPTPQDLP
Isotype:	IgG
Cross-Reactivity:	Mouse
Characteristics:	Polyclonal Antibodies
Purification:	Affinity purification

## Target Details

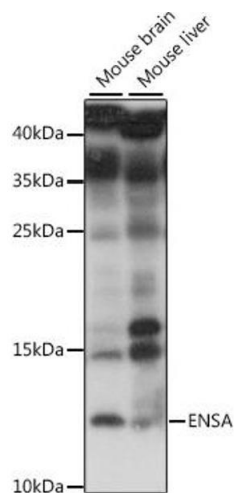
Target:	Ensa (ENSA)
Alternative Name:	ENSA ( <a href="#">ENSA Products</a> )
Background:	<p>The protein encoded by this gene belongs to a highly conserved cAMP-regulated phosphoprotein (ARPP) family. This protein was identified as an endogenous ligand for the sulfonylurea receptor, ABCC8/SUR1. ABCC8 is the regulatory subunit of the ATP-sensitive potassium (KATP) channel, which is located on the plasma membrane of pancreatic beta cells and plays a key role in the control of insulin release from pancreatic beta cells. This protein is thought to be an endogenous regulator of KATP channels. In vitro studies have demonstrated that this protein modulates insulin secretion through the interaction with KATP channel, and this gene has been proposed as a candidate gene for type 2 diabetes. At least eight alternatively spliced transcript variants encoding distinct isoforms have been observed.,ENSA,ARPP-19e,Neuroscience,ENSA</p>
Molecular Weight:	11kDa/12kDa/13kDa/14kDa/15kDa
Gene ID:	2029
UniProt:	<a href="#">O43768</a>

## Application Details

Application Notes:	WB,1:500 - 1:2000
Restrictions:	For Research Use only

## Handling

Format:	Liquid
Buffer:	PBS with 0.02 % sodium azide,50 % glycerol, pH 7.3.
Preservative:	Sodium azide
Precaution of Use:	This product contains Sodium azide: a POISONOUS AND HAZARDOUS SUBSTANCE which should be handled by trained staff only.
Storage:	-20 °C
Storage Comment:	Store at -20°C. Avoid freeze / thaw cycles.



### Western Blotting

**Image 1.** Western blot analysis of extracts of various cell lines, using ENSA antibody (ABIN7266947) at 1:1000 dilution. Secondary antibody: HRP Goat Anti-Rabbit IgG (H+L) (ABIN1684268 and ABIN3020597) at 1:10000 dilution. Lysates/proteins: 25 µg per lane. Blocking buffer: 3 % nonfat dry milk in TBST. Detection: ECL Basic Kit (RM00020). Exposure time: 10s.