



Datasheet for ABIN7266952  
**anti-ELMO1 antibody (AA 527-727)**



[Go to Product page](#)

1 Image

Overview

Quantity:	100 µL
Target:	ELMO1
Binding Specificity:	AA 527-727
Reactivity:	Human
Host:	Rabbit
Clonality:	Polyclonal
Conjugate:	This ELMO1 antibody is un-conjugated
Application:	Western Blotting (WB)

Product Details

Purpose:	ELMO1 Rabbit pAb
Immunogen:	Recombinant fusion protein containing a sequence corresponding to amino acids 527-727 of human ELMO1 (NP_055615.8).
Sequence:	DFQSRPILEL KEKIQPEILE LIKQQLNRL VEGTCFRKLN ARRRQDKFWY CRLSPNHKVL HYGDLEESPQ GEVPHDSLQD KLPVADIKAV VTGKDCPHMK EKGALKQNKE VLELAFSILY DSNCQLNFIA PDKHEYCIWT DGLNALLGKD MMSDLTRNDL DTLLSMEIKL RLLDLENIQI PDAPPIPIKE PSNYDFVYDC N
Isotype:	IgG
Cross-Reactivity:	Human, Mouse
Characteristics:	Polyclonal Antibodies

## Product Details

---

Purification: Affinity purification

## Target Details

---

Target: ELM01

Alternative Name: ELM01 ([ELM01 Products](#))

Background: This gene encodes a member of the engulfment and cell motility protein family. These proteins interact with dedicator of cytokinesis proteins to promote phagocytosis and cell migration. Increased expression of this gene and dedicator of cytokinesis 1 may promote glioma cell invasion, and single nucleotide polymorphisms in this gene may be associated with diabetic nephropathy. Alternative splicing results in multiple transcript variants.,ELM01,CED-12,CED12,ELMO-1,Cancer,Invasion and Metastasis,Signal Transduction,G protein signaling,Signal Transduction,Cell Biology & Developmental Biology,Apoptosis,Cytoskeleton,Extracellular Matrix,Endocrine & Metabolism,ELM01

Molecular Weight: 28kDa/49kDa/83kDa

Gene ID: 9844

UniProt: [Q92556](#)

## Application Details

---

Application Notes: WB,1:500 - 1:2000

Restrictions: For Research Use only

## Handling

---

Format: Liquid

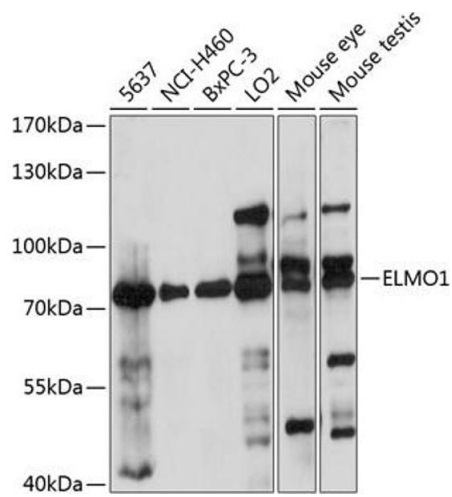
Buffer: PBS with 0.02 % sodium azide,50 % glycerol, pH 7.3.

Preservative: Sodium azide

Precaution of Use: This product contains Sodium azide: a POISONOUS AND HAZARDOUS SUBSTANCE which should be handled by trained staff only.

Storage: -20 °C

Storage Comment: Store at -20°C. Avoid freeze / thaw cycles.



### Western Blotting

**Image 1.** Western blot analysis of extracts of various cell lines, using ELMO1 antibody at 1:1000 dilution. Secondary antibody: HRP Goat Anti-Rabbit IgG (H+L) (ABIN1684268 and ABIN3020597) at 1:10000 dilution. Lysates/proteins: 25 µg per lane. Blocking buffer: 3% nonfat dry milk in TBST. Detection: ECL Basic Kit (RM00020). Exposure time: 60s.