



[Go to Product page](#)

Datasheet for ABIN7266960
anti-ENO3 antibody (AA 1-190)

4 Images

Overview

Quantity:	100 µL
Target:	ENO3
Binding Specificity:	AA 1-190
Reactivity:	Human
Host:	Rabbit
Clonality:	Polyclonal
Conjugate:	This ENO3 antibody is un-conjugated
Application:	Western Blotting (WB), Immunofluorescence (IF)

Product Details

Purpose:	ENO3 Rabbit pAb
Immunogen:	Recombinant fusion protein containing a sequence corresponding to amino acids 1-190 of human ENO3 (NP_001967.3).
Sequence:	MAMQKIFARE ILDSRGNPTV EVDLHTAKGR FRAAVPSGAS TGIYEALRLR DGDKGRYLGK GVLKAVENIN NTLGPALLQK KLSVVDQEKV DKFMIELDGT ENKSKFGANA ILGVSLAVCK AGAAEKGVPL YRHIADLAGN PDLILPVPAF NVINGGSHAG NKLAMQEFMI LPVGASSFKE AMRIGAEVYH
Isotype:	IgG
Cross-Reactivity:	Human, Mouse, Rat
Characteristics:	Polyclonal Antibodies

Product Details

Purification: Affinity purification

Target Details

Target: ENO3

Alternative Name: ENO3 ([ENO3 Products](#))

Background: This gene encodes one of the three enolase isoenzymes found in mammals. This isoenzyme is found in skeletal muscle cells in the adult where it may play a role in muscle development and regeneration. A switch from alpha enolase to beta enolase occurs in muscle tissue during development in rodents. Mutations in this gene have been associated with glycogen storage disease. Alternatively spliced transcript variants encoding different isoforms have been described. ENO3, GSD13, MSE, enolase 3, Cancer, Signal Transduction, Endocrine & Metabolism, Carbohydrate metabolism, ENO3

Molecular Weight: 42kDa/44kDa/46kDa

Gene ID: 2027

UniProt: [P13929](#)

Application Details

Application Notes: WB, 1:500 - 1:2000, IF, 1:50 - 1:200

Restrictions: For Research Use only

Handling

Format: Liquid

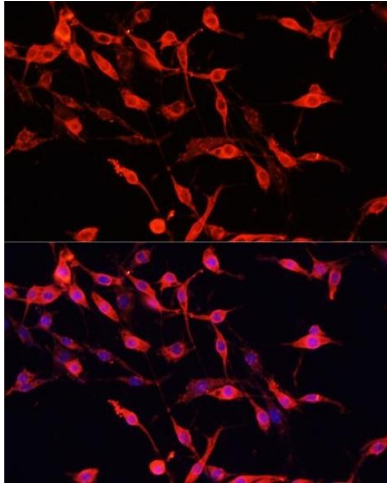
Buffer: PBS with 0.02 % sodium azide, 50 % glycerol, pH 7.3.

Preservative: Sodium azide

Precaution of Use: This product contains Sodium azide: a POISONOUS AND HAZARDOUS SUBSTANCE which should be handled by trained staff only.

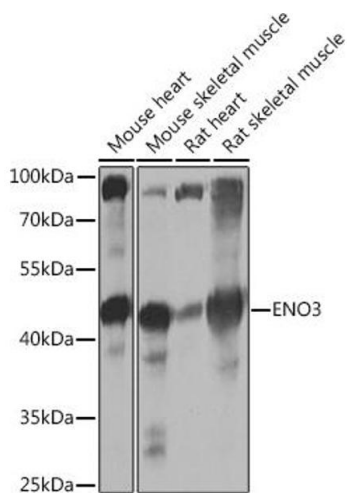
Storage: -20 °C

Storage Comment: Store at -20°C. Avoid freeze / thaw cycles.



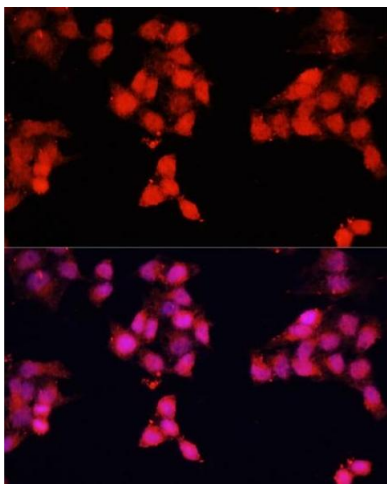
Immunofluorescence

Image 1. Immunofluorescence analysis of PC-12 cells using ENO3 antibody (ABIN7266960) at dilution of 1:100. Blue: DAPI for nuclear staining.



Western Blotting

Image 2. Western blot analysis of extracts of various cell lines, using ENO3 Rabbit pAb (ABIN7266960) at 1:1000 dilution. Secondary antibody: HRP Goat Anti-Rabbit IgG (H+L) (ABIN1684268 and ABIN3020597) at 1:10000 dilution. Lysates/proteins: 25 µg per lane. Blocking buffer: 3 % nonfat dry milk in TBST. Detection: ECL Basic Kit (RM00020). Exposure time: 1s.



Immunofluorescence

Image 3. Immunofluorescence analysis of HeLa cells using ENO3 antibody (ABIN7266960) at dilution of 1:100. Blue: DAPI for nuclear staining.

Please check the [product details page](#) for more images. Overall 4 images are available for ABIN7266960.