

Datasheet for ABIN7266966
anti-EPX antibody (AA 400-500)[Go to Product page](#)

1 Image

Overview

Quantity:	100 µL
Target:	EPX
Binding Specificity:	AA 400-500
Reactivity:	Human
Host:	Rabbit
Clonality:	Polyclonal
Conjugate:	This EPX antibody is un-conjugated
Application:	Western Blotting (WB)

Product Details

Purpose:	EPX Rabbit pAb
Immunogen:	A synthetic peptide corresponding to a sequence within amino acids 400-500 of human EPX (NP_000493.1).
Sequence:	TELRRRLNPRW NGDKLYNEAR KIMGAMVQII TYRDFLPLVL GKARARRTLG HYRGYCSNVD PRVANVFTLA FRFGHTMLQP FMFRLDSQYR ASAPNSHVPL S
Isotype:	IgG
Cross-Reactivity:	Human
Characteristics:	Polyclonal Antibodies
Purification:	Affinity purification

Target Details

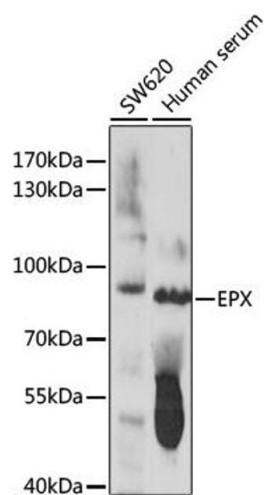
Target:	EPX
Alternative Name:	EPX (EPX Products)
Background:	<p>This gene is a member of the peroxidase gene family and is expressed in eosinophils. The encoded preproprotein is proteolytically processed into covalently attached heavy and light chains to form the mature enzyme, which functions as an oxidant. The enzyme is released at sites of parasitic infection or allergen stimulation to mediate lysis of protozoa or parasitic worms. The gene is found in a gene cluster with other peroxidase genes on chromosome 17. Mutations in this gene result in eosinophil peroxidase deficiency.,EPX,EPO,EPP,EPX-PEN,EPXD,Cancer,Endocrine & Metabolism,Stem Cells,Hematopoietic Progenitors,EPX</p>
Molecular Weight:	81kDa
Gene ID:	8288
UniProt:	P11678

Application Details

Application Notes:	WB,1:500 - 1:2000
Restrictions:	For Research Use only

Handling

Format:	Liquid
Buffer:	PBS with 0.02 % sodium azide,50 % glycerol, pH 7.3.
Preservative:	Sodium azide
Precaution of Use:	This product contains Sodium azide: a POISONOUS AND HAZARDOUS SUBSTANCE which should be handled by trained staff only.
Storage:	-20 °C
Storage Comment:	Store at -20°C. Avoid freeze / thaw cycles.



Western Blotting

Image 1. Western blot analysis of extracts of various cell lines, using EPX antibody (ABIN7266966) at 1:1000 dilution. Secondary antibody: HRP Goat Anti-Rabbit IgG (H+L) (ABIN1684268 and ABIN3020597) at 1:10000 dilution. Lysates/proteins: 25 µg per lane. Blocking buffer: 3 % nonfat dry milk in TBST. Detection: ECL Basic Kit (RM00020). Exposure time: 30s.