

Datasheet for ABIN7266971
anti-EPH Receptor A5 antibody (AA 1-130)[Go to Product page](#)

2 Images

Overview

Quantity:	100 µL
Target:	EPH Receptor A5 (EPHA5)
Binding Specificity:	AA 1-130
Reactivity:	Human
Host:	Rabbit
Clonality:	Polyclonal
Conjugate:	This EPH Receptor A5 antibody is un-conjugated
Application:	Western Blotting (WB), Immunofluorescence (IF)

Product Details

Purpose:	EPHA5 Rabbit pAb
Immunogen:	Recombinant fusion protein containing a sequence corresponding to amino acids 1-130 of human EPHA5 (NP_004430.4).
Sequence:	MRGSGPRGAG RRRPPSGGGD TPITPASLAG CYSAPRRAPL WTCLLLCAAL RTLLASPSNE VNLLDSRTVM GDLGWIAFPK NGWEEIGEVD ENYAPIHTYQ VCKVMEQNQN NWLLTSWISN EGASRIFIEL
Isotype:	IgG
Cross-Reactivity:	Human, Mouse, Rat
Characteristics:	Polyclonal Antibodies
Purification:	Affinity purification

Target Details

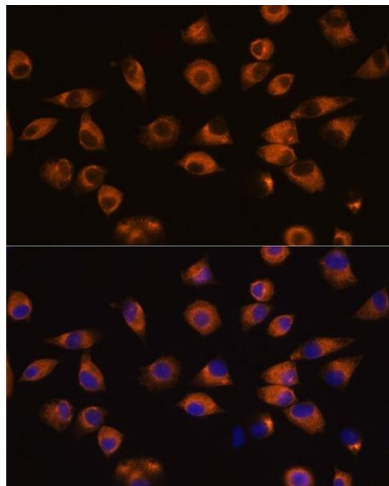
Target:	EPH Receptor A5 (EPHA5)
Alternative Name:	EPHA5 (EPHA5 Products)
Background:	<p>This gene belongs to the ephrin receptor subfamily of the protein-tyrosine kinase family. EPH and EPH-related receptors have been implicated in mediating developmental events, particularly in the nervous system. Receptors in the EPH subfamily typically have a single kinase domain and an extracellular region containing a Cys-rich domain and 2 fibronectin type III repeats. The ephrin receptors are divided into 2 groups based on the similarity of their extracellular domain sequences and their affinities for binding ephrin-A and ephrin-B ligands. Alternatively spliced transcript variants encoding different isoforms have been described.,EPHA5,CEK7,EHK-1,EHK1,EK7,HEK7,TYRO4,Signal Transduction,Kinase,Neuroscience,Cell Type Marker,Cardiovascular,Angiogenesis,Neuron marker,Growth Cone,EPHA5</p>
Molecular Weight:	107kDa/112kDa/114kDa
Gene ID:	2044
UniProt:	P54756
Pathways:	RTK Signaling

Application Details

Application Notes:	WB,1:500 - 1:2000,IF,1:50 - 1:200
Restrictions:	For Research Use only

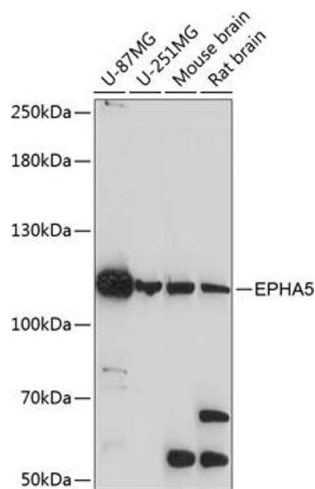
Handling

Format:	Liquid
Buffer:	PBS with 0.02 % sodium azide,50 % glycerol, pH 7.3.
Preservative:	Sodium azide
Precaution of Use:	This product contains Sodium azide: a POISONOUS AND HAZARDOUS SUBSTANCE which should be handled by trained staff only.
Storage:	-20 °C
Storage Comment:	Store at -20°C. Avoid freeze / thaw cycles.



Immunofluorescence

Image 1. Immunofluorescence analysis of L929 cells using EPH Rabbit pAb (ABIN7266971) at dilution of 1:100 (40x lens). Blue: DAPI for nuclear staining.



Western Blotting

Image 2. Western blot analysis of extracts of various cell lines, using EPH antibody (ABIN7266971) at 1:1000 dilution. Secondary antibody: HRP Goat Anti-Rabbit IgG (H+L) (ABIN1684268 and ABIN3020597) at 1:10000 dilution. Lysates/proteins: 25 µg per lane. Blocking buffer: 3 % nonfat dry milk in TBST. Detection: ECL Basic Kit (RM00020). Exposure time: 90s.