



[Go to Product page](#)

Datasheet for ABIN7266978  
**anti-Ephrin B2 antibody**

3 Images

### Overview

Quantity:	100 µL
Target:	Ephrin B2 (EFNB2)
Reactivity:	Human
Host:	Rabbit
Clonality:	Monoclonal
Conjugate:	This Ephrin B2 antibody is un-conjugated
Application:	Western Blotting (WB), Immunohistochemistry (IHC)

### Product Details

Purpose:	Ephrin B2 Rabbit mAb
Immunogen:	A synthesized peptide derived from human Ephrin B2
Isotype:	IgG
Cross-Reactivity:	Human, Mouse, Rat
Characteristics:	Monoclonal Antibodies
Purification:	Affinity purification

### Target Details

Target:	Ephrin B2 (EFNB2)
Alternative Name:	EFNB2 ( <a href="#">EFNB2 Products</a> )
Background:	This gene encodes a member of the ephrin (EPH) family. The ephrins and EPH-related

## Target Details

---

receptors comprise the largest subfamily of receptor protein-tyrosine kinases and have been implicated in mediating developmental events, especially in the nervous system and in erythropoiesis. Based on their structures and sequence relationships, ephrins are divided into the ephrin-A (EFNA) class, which are anchored to the membrane by a glycosylphosphatidylinositol linkage, and the ephrin-B (EFNB) class, which are transmembrane proteins. This gene encodes an EFNB class ephrin which binds to the EPHB4 and EPHA3 receptors. [provided by RefSeq, Jul 2008],EPLG5, HTKL, Htk-L, LERK5,Angiogenesis,Angiogenesis\_Angiogenic growth factors,Cancer,Cardiovascular,Cell Biology & Developmental Biology,Cell Type Marker,Cell Type Marker\_Growth Cone,Cell Type Marker\_Neuron marker,Growth factors,Invasion and Metastasis,Kinase,Neuroscience,EFNB2

---

Molecular Weight: 50kDa

---

Gene ID: 1948

---

UniProt: [P52799](#)

---

Pathways: [RTK Signaling, Regulation of Muscle Cell Differentiation](#)

## Application Details

---

---

Application Notes: WB,1:500 - 1:2000,IHC,1:50 - 1:200

---

Restrictions: For Research Use only

## Handling

---

---

Format: Liquid

---

Buffer: PBS with 0.02 % sodium azide,0.05 % BSA,50 % glycerol, pH 7.3.

---

Preservative: Sodium azide

---

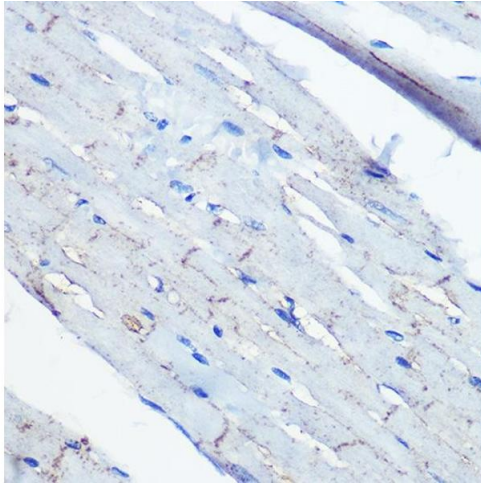
Precaution of Use: This product contains Sodium azide: a POISONOUS AND HAZARDOUS SUBSTANCE which should be handled by trained staff only.

---

Storage: -20 °C

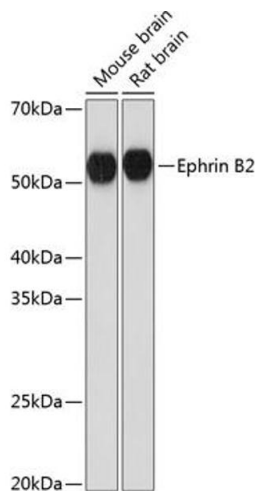
---

Storage Comment: Store at -20°C. Avoid freeze / thaw cycles.



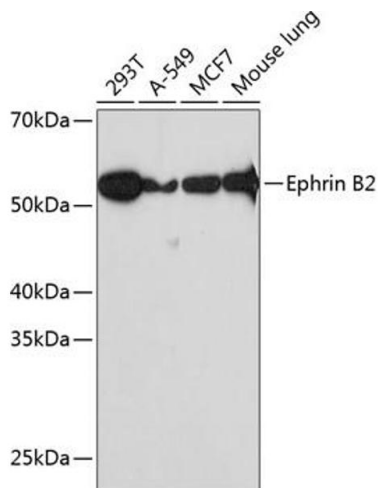
### Immunohistochemistry

**Image 1.** Immunohistochemistry of paraffin-embedded rat heart using Ephrin B2 Rabbit mAb (ABIN7266978) at dilution of 1:100 (40x lens). Perform microwave antigen retrieval with 10 mM PBS buffer pH 7.2 before commencing with IHC staining protocol.



### Western Blotting

**Image 2.** Western blot analysis of extracts of various cell lines, using Ephrin B2 Rabbit mAb (ABIN7266978) at 1:1000 dilution. Secondary antibody: HRP Goat Anti-Rabbit IgG (H+L) (ABIN1684268 and ABIN3020597) at 1:10000 dilution. Lysates/proteins: 25 µg per lane. Blocking buffer: 3 % nonfat dry milk in TBST. Detection: ECL Basic Kit (RM00020). Exposure time: 5s.



### Western Blotting

**Image 3.** Western blot analysis of extracts of various cell lines, using Ephrin B2 Rabbit mAb (ABIN7266978) at 1:1000 dilution. Secondary antibody: HRP Goat Anti-Rabbit IgG (H+L) (ABIN1684268 and ABIN3020597) at 1:10000 dilution. Lysates/proteins: 25 µg per lane. Blocking buffer: 3 % nonfat dry milk in TBST. Detection: ECL Basic Kit (RM00020). Exposure time: 30s.