



[Go to Product page](#)

Datasheet for ABIN7266982
anti-EGFR antibody (AA 1021-1210)

7 Images

Overview

Quantity:	100 µL
Target:	EGFR
Binding Specificity:	AA 1021-1210
Reactivity:	Human
Host:	Rabbit
Clonality:	Polyclonal
Conjugate:	This EGFR antibody is un-conjugated
Application:	Western Blotting (WB), Immunohistochemistry (IHC), Immunoprecipitation (IP)

Product Details

Purpose:	EGFR Rabbit pAb
Immunogen:	Recombinant fusion protein containing a sequence corresponding to amino acids 1021-1210 of human EGFR (NP_005219.2).
Sequence:	QGFFSSPSTS RTPLSSLSA TSNNSTVACI DRNGLQSCPI KEDSFLQRYSDPTGALTED SIDDTFLPVP EYINQSVPKR PAGSVQNPVY HNQPLNPAPS RDPHYQDPHS TAVGNPEYLN TVQPTCVNST FDSPAHWAQK GSHQISLDNP DYQQDFFPKE AKPNGIFKGS TAENAEYLRV APQSSEFIGA
Isotype:	IgG
Cross-Reactivity:	Human, Mouse, Rat
Characteristics:	Polyclonal Antibodies

Product Details

Purification: Affinity purification

Target Details

Target: EGFR

Alternative Name: EGFR ([EGFR Products](#))

Background: The protein encoded by this gene is a transmembrane glycoprotein that is a member of the protein kinase superfamily. This protein is a receptor for members of the epidermal growth factor family. EGFR is a cell surface protein that binds to epidermal growth factor. Binding of the protein to a ligand induces receptor dimerization and tyrosine autophosphorylation and leads to cell proliferation. Mutations in this gene are associated with lung cancer.,EGFR,ERBB,ERBB1,HER1,NISBD2,PIG61,mENA,Cancer,Tumor biomarkers,Signal Transduction,G protein signaling,Kinase,Tyrosine kinases,Phospholipase Signaling Pathway,ErbB-HER Signaling Pathway,Cell Biology & Developmental Biology,Growth factor,EGF,Immunology & Inflammation,IL-6 Receptor Signaling Pathway,Cardiovascular,Angiogenesis,EGFR

Molecular Weight: 44kDa/69kDa/77kDa/134kDa

Gene ID: 1956

UniProt: [P00533](#)

Pathways: [NF-kappaB Signaling](#), [RTK Signaling](#), [Fc-epsilon Receptor Signaling Pathway](#), [EGFR Signaling Pathway](#), [Neurotrophin Signaling Pathway](#), [Stem Cell Maintenance](#), [Hepatitis C](#), [Positive Regulation of Response to DNA Damage Stimulus](#), [Interaction of EGFR with phospholipase C-gamma](#), [Thromboxane A2 Receptor Signaling](#), [EGFR Downregulation](#), [S100 Proteins](#)

Application Details

Application Notes: WB,1:500 - 1:2000,IHC,1:50 - 1:200,IP,1:50 - 1:100

Restrictions: For Research Use only

Handling

Format: Liquid

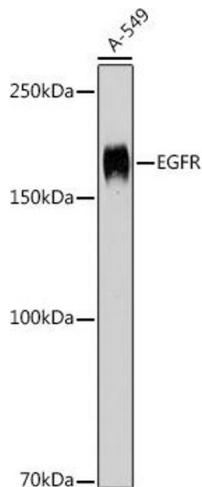
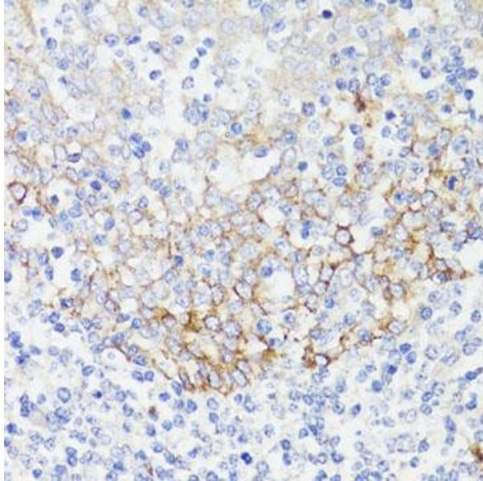
Buffer: PBS with 0.02 % sodium azide,50 % glycerol, pH 7.3.

Preservative: Sodium azide

Handling

Precaution of Use:	This product contains Sodium azide: a POISONOUS AND HAZARDOUS SUBSTANCE which should be handled by trained staff only.
Storage:	-20 °C
Storage Comment:	Store at -20°C. Avoid freeze / thaw cycles.

Images

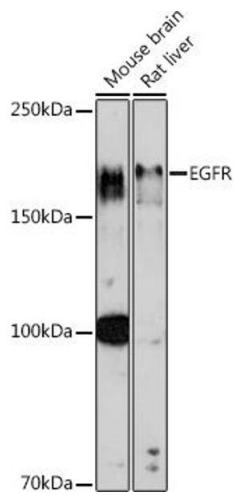


Western Blotting

Image 1. Western blot analysis of extracts of various cell lines, using EGFR antibody (ABIN7266982) at 1:1000 dilution. Secondary antibody: HRP Goat Anti-Rabbit IgG (H+L) (ABIN1684268 and ABIN3020597) at 1:10000 dilution. Lysates/proteins: 25 µg per lane. Blocking buffer: 3 % nonfat dry milk in TBST. Detection: ECL Basic Kit (RM00020). Exposure time: 1s.

Western Blotting

Image 2. Western blot analysis of extracts of A-549 cells, using EGFR antibody (ABIN7266982) at 1:1000 dilution. Secondary antibody: HRP Goat Anti-Rabbit IgG (H+L) (ABIN1684268 and ABIN3020597) at 1:10000 dilution. Lysates/proteins: 25 µg per lane. Blocking buffer: 3 % nonfat dry milk in TBST. Detection: ECL Basic Kit (RM00020). Exposure time: 30s.



Western Blotting

Image 3. Western blot analysis of extracts of various cell lines, using EGFR antibody (ABIN7266982) at 1:1000 dilution. Secondary antibody: HRP Goat Anti-Rabbit IgG (H+L) (ABIN1684268 and ABIN3020597) at 1:10000 dilution. Lysates/proteins: 25 µg per lane. Blocking buffer: 3 % nonfat dry milk in TBST. Detection: ECL Enhanced Kit (RM00021). Exposure time: 180s.

Please check the [product details page](#) for more images. Overall 7 images are available for ABIN7266982.