



Datasheet for ABIN7266992
anti-EPS8 antibody (AA 1-200)



[Go to Product page](#)

1 Image

Overview

Quantity:	100 µL
Target:	EPS8
Binding Specificity:	AA 1-200
Reactivity:	Human
Host:	Rabbit
Clonality:	Polyclonal
Conjugate:	This EPS8 antibody is un-conjugated
Application:	Western Blotting (WB)

Product Details

Purpose:	EPS8 Rabbit pAb
Immunogen:	Recombinant fusion protein containing a sequence corresponding to amino acids 1-200 of human EPS8 (NP_004438.3).
Sequence:	MNGHISNHPS SFGMYPSQMN GYGSSPTFSQ TDREHGSKTS AKALYEQRKN YARDSVSSVS DISQYRVEHL TTFVLDRKDA MITVDDGIRK LKLLDAKGKV WTQDMILQVD DRAVSLIDLE SKNELENFPL NTIQHCQAVM HSCSYDSVLA LVCKEPTQNK PDLHLFQCDE VKANLISED ESAISDSKGG KQKRRPDALR
Isotype:	IgG
Cross-Reactivity:	Human, Mouse, Rat
Characteristics:	Polyclonal Antibodies

Product Details

Purification: Affinity purification

Target Details

Target: EPS8

Alternative Name: EPS8 ([EPS8 Products](#))

Background: This gene encodes a member of the EPS8 family. This protein contains one PH domain and one SH3 domain. It functions as part of the EGFR pathway, though its exact role has not been determined. Highly similar proteins in other organisms are involved in the transduction of signals from Ras to Rac and growth factor-mediated actin remodeling. Alternate transcriptional splice variants of this gene have been observed but have not been thoroughly characterized. EPS8,DFNB102,Cancer,Signal Transduction,Cell Biology & Developmental Biology,Growth factor,EGF,EPS8

Molecular Weight: 62kDa/91kDa

Gene ID: 2059

UniProt: [Q12929](#)

Pathways: [EGFR Signaling Pathway](#), [Regulation of Actin Filament Polymerization](#)

Application Details

Application Notes: WB,1:500 - 1:2000

Restrictions: For Research Use only

Handling

Format: Liquid

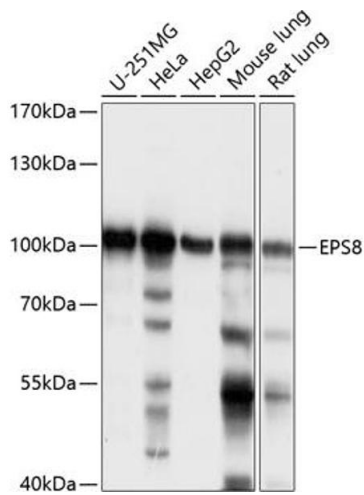
Buffer: PBS with 0.02 % sodium azide,50 % glycerol, pH 7.3.

Preservative: Sodium azide

Precaution of Use: This product contains Sodium azide: a POISONOUS AND HAZARDOUS SUBSTANCE which should be handled by trained staff only.

Storage: -20 °C

Storage Comment: Store at -20°C. Avoid freeze / thaw cycles.



Western Blotting

Image 1. Western blot analysis of extracts of various cell lines, using EPS8 antibody (ABIN7266992) at 1:1000 dilution. Secondary antibody: HRP Goat Anti-Rabbit IgG (H+L) (ABIN1684268 and ABIN3020597) at 1:10000 dilution. Lysates/proteins: 25 µg per lane. Blocking buffer: 3 % nonfat dry milk in TBST. Detection: ECL Enhanced Kit (RM00021). Exposure time: 1s.