

Datasheet for ABIN7266999

**anti-EPHX2 antibody****2** Images[Go to Product page](#)

## Overview

Quantity:	100 µL
Target:	EPHX2
Reactivity:	Human
Host:	Rabbit
Clonality:	Monoclonal
Conjugate:	This EPHX2 antibody is un-conjugated
Application:	Western Blotting (WB)

## Product Details

Purpose:	EPHX2 Rabbit mAb
Immunogen:	Recombinant protein of Human EPHX2.
Isotype:	IgG
Cross-Reactivity:	Mouse, Rat
Characteristics:	Monoclonal Antibodies
Purification:	Affinity purification

## Target Details

Target:	EPHX2
Alternative Name:	EPHX2 ( <a href="#">EPHX2 Products</a> )
Background:	This gene encodes a member of the epoxide hydrolase family. The protein, found in both the

## Target Details

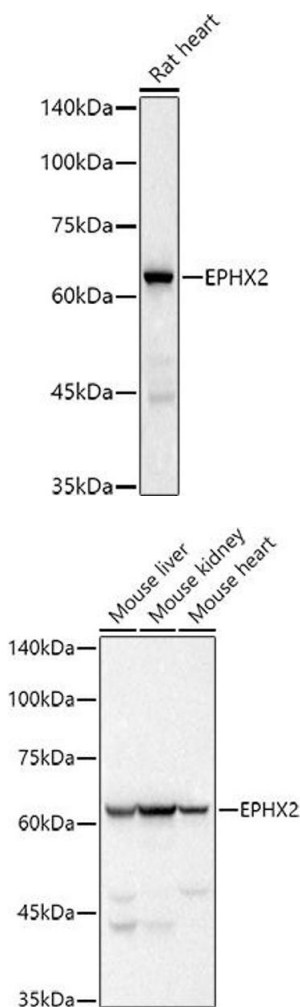
	cytosol and peroxisomes, binds to specific epoxides and converts them to the corresponding dihydrodiols. Mutations in this gene have been associated with familial hypercholesterolemia. Alternatively spliced transcript variants have been described.,EPHX2,CEH,SEH,Cancer,Signal Transduction,Cell Biology & Developmental Biology,Endocrine & Metabolism,Lipid Metabolism,Cholesterol Metabolism,Drug metabolism,Cardiovascular,Lipids,Fatty Acids,EPHX2
Molecular Weight:	55kDa/57kDa/62kDa
Gene ID:	2053
UniProt:	<a href="#">P34913</a>

## Application Details

Application Notes:	WB,1:500 - 1:2000
Restrictions:	For Research Use only

## Handling

Format:	Liquid
Buffer:	PBS with 0.02 % sodium azide,0.05 % BSA,50 % glycerol, pH 7.3.
Preservative:	Sodium azide
Precaution of Use:	This product contains Sodium azide: a POISONOUS AND HAZARDOUS SUBSTANCE which should be handled by trained staff only.
Storage:	-20 °C
Storage Comment:	Store at -20°C. Avoid freeze / thaw cycles.



### Western Blotting

**Image 1.** Western blot analysis of extracts of Rat heart, using EPHX2 antibody (ABIN7266999) at 1:500 dilution. Secondary antibody: HRP Goat Anti-Rabbit IgG (H+L) (ABIN1684268 and ABIN3020597) at 1:10000 dilution. Lysates/proteins: 25 µg per lane. Blocking buffer: 3 % nonfat dry milk in TBST. Detection: ECL Basic Kit (RM00020). Exposure time: 60s.

### Western Blotting

**Image 2.** Western blot analysis of extracts of various cell lines, using EPHX2 antibody (ABIN7266999) at 1:500 dilution. Secondary antibody: HRP Goat Anti-Rabbit IgG (H+L) (ABIN1684268 and ABIN3020597) at 1:10000 dilution. Lysates/proteins: 25 µg per lane. Blocking buffer: 3 % nonfat dry milk in TBST. Detection: ECL Basic Kit (RM00020). Exposure time: 1s.