



[Go to Product page](#)

Datasheet for ABIN7267003
anti-Epsin 2 antibody (AA 100-200)

1 Image

Overview

Quantity:	100 µL
Target:	Epsin 2 (EPN2)
Binding Specificity:	AA 100-200
Reactivity:	Mouse
Host:	Rabbit
Clonality:	Polyclonal
Conjugate:	This Epsin 2 antibody is un-conjugated
Application:	Western Blotting (WB)

Product Details

Purpose:	Epn2 Rabbit pAb
Immunogen:	A synthetic peptide corresponding to a sequence within amino acids 100-200 of mouse Epn2 (XP_006532226.1).
Sequence:	IFAIQTLKDF QYIDRDGKDQ GINVREKSKQ LVALLKDEER LKVERVQALK TKERMAQVAT GVGSNQITFG RGSSQPNLST SYSEQEYGKA GGSPASYHGS P
Isotype:	IgG
Cross-Reactivity:	Human, Mouse, Rat
Characteristics:	Polyclonal Antibodies
Purification:	Affinity purification

Target Details

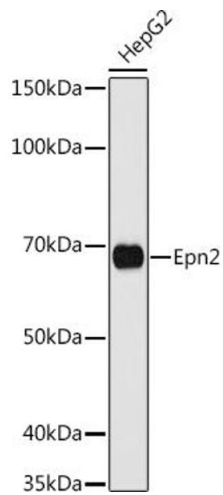
Target:	Epsin 2 (EPN2)
Alternative Name:	EPN2 (EPN2 Products)
Background:	Plays a role in the formation of clathrin-coated invaginations and endocytosis.,9530051D10Rik,AA536924,lbp2,Epn2,EPN2
Molecular Weight:	36kDa/57kDa/62kDa/68kDa
Gene ID:	13855
UniProt:	O95208
Pathways:	EGFR Downregulation

Application Details

Application Notes:	WB,1:500 - 1:2000
Restrictions:	For Research Use only

Handling

Format:	Liquid
Buffer:	PBS with 0.02 % sodium azide,50 % glycerol, pH 7.3.
Preservative:	Sodium azide
Precaution of Use:	This product contains Sodium azide: a POISONOUS AND HAZARDOUS SUBSTANCE which should be handled by trained staff only.
Storage:	-20 °C
Storage Comment:	Store at -20°C. Avoid freeze / thaw cycles.



Western Blotting

Image 1. Western blot analysis of extracts of HepG2 cells, using Epn2 antibody (ABIN7267003) at 1:1000 dilution. Secondary antibody: HRP Goat Anti-Rabbit IgG (H+L) (ABIN1684268 and ABIN3020597) at 1:10000 dilution. Lysates/proteins: 25 µg per lane. Blocking buffer: 3 % nonfat dry milk in TBST. Detection: ECL Basic Kit (RM00020). Exposure time: 90s.