



[Go to Product page](#)

Datasheet for ABIN7267006

anti-ERLIN2 antibody

3 Images

Overview

Quantity:	100 µL
Target:	ERLIN2
Reactivity:	Human
Host:	Rabbit
Clonality:	Monoclonal
Conjugate:	This ERLIN2 antibody is un-conjugated
Application:	Western Blotting (WB), Immunohistochemistry (IHC)

Product Details

Purpose:	Erlin-2 Rabbit mAb
Immunogen:	A synthesized peptide derived from human Erlin-2.
Isotype:	IgG
Cross-Reactivity:	Human, Mouse, Rat
Characteristics:	Monoclonal Antibodies
Purification:	Affinity purification

Target Details

Target:	ERLIN2
Alternative Name:	Erlin-2 (ERLIN2 Products)
Background:	This gene encodes a member of the SPFH domain-containing family of lipid raft-associated

Target Details

proteins. The encoded protein is localized to lipid rafts of the endoplasmic reticulum and plays a critical role in inositol 1,4,5-trisphosphate (IP3) signaling by mediating ER-associated degradation of activated IP3 receptors. Mutations in this gene are a cause of spastic paraplegia-18 (SPG18). Alternatively spliced transcript variants encoding multiple isoforms have been observed for this gene.,ERLIN2, C8orf2, Erlin-2, NET32, SPFH2, SPG18, erlin-2,Signal Transduction,Neuroscience,Neurodegenerative Diseases,Amyloid Plaque and Neurofibrillary Tangle Formation in Alzheimer's Disease,Dopamine Signaling in Parkinson's Disease,Erlin-2

Molecular Weight: 38kDa

Gene ID: 11160

UniProt: [O94905](#)

Application Details

Application Notes: WB,1:500 - 1:2000,IHC,1:50 - 1:200

Restrictions: For Research Use only

Handling

Format: Liquid

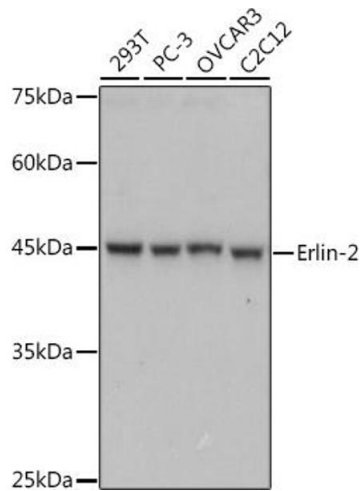
Buffer: PBS with 0.02 % sodium azide,0.05 % BSA,50 % glycerol, pH 7.3.

Preservative: Sodium azide

Precaution of Use: This product contains Sodium azide: a POISONOUS AND HAZARDOUS SUBSTANCE which should be handled by trained staff only.

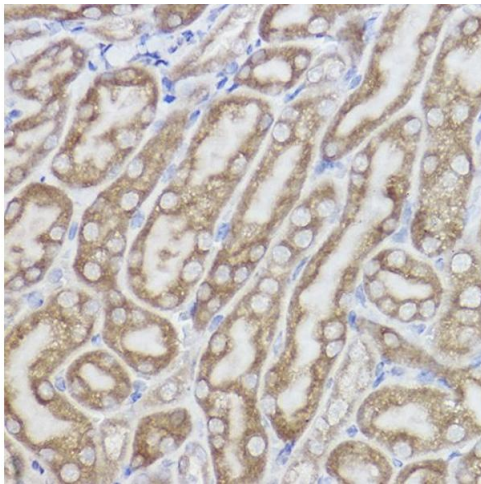
Storage: -20 °C

Storage Comment: Store at -20°C. Avoid freeze / thaw cycles.



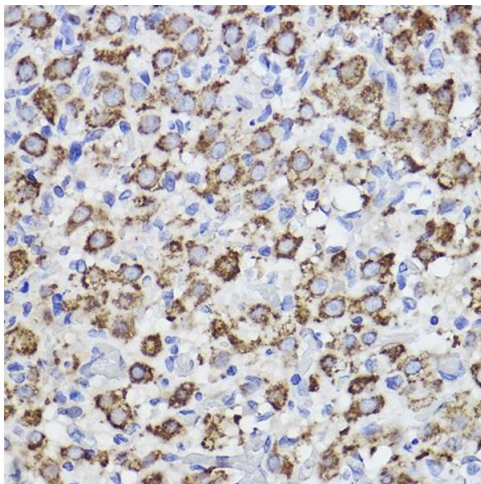
Western Blotting

Image 1. Western blot analysis of extracts of various cell lines, using Erlin-2 antibody (ABIN7267006) at 1:1000 dilution. Secondary antibody: HRP Goat Anti-Rabbit IgG (H+L) (ABIN1684268 and ABIN3020597) at 1:10000 dilution. Lysates/proteins: 25 µg per lane. Blocking buffer: 3 % nonfat dry milk in TBST. Detection: ECL Basic Kit (RM00020). Exposure time: 1s.



Immunohistochemistry

Image 2. Immunohistochemistry of paraffin-embedded mouse kidney using Erlin-2 Rabbit mAb (ABIN7267006) at dilution of 1:100 (40x lens). Perform high pressure antigen retrieval with 10 mM citrate buffer pH 6.0 before commencing with IHC staining protocol.



Immunohistochemistry

Image 3. Immunohistochemistry of paraffin-embedded rat ovary using Erlin-2 Rabbit mAb (ABIN7267006) at dilution of 1:100 (40x lens). Perform high pressure antigen retrieval with 10 mM citrate buffer pH 6.0 before commencing with IHC staining protocol.