

Datasheet for ABIN7267021

**anti-eEF1A1 antibody**

## 4 Images

[Go to Product page](#)

## Overview

Quantity:	100 µL
Target:	eEF1A1 (EEF1A1)
Reactivity:	Human
Host:	Rabbit
Clonality:	Monoclonal
Conjugate:	This eEF1A1 antibody is un-conjugated
Application:	Western Blotting (WB), Immunofluorescence (IF)

## Product Details

Purpose:	eEF1A1 Rabbit mAb
Immunogen:	A synthesized peptide derived from human eEF1A1
Isotype:	IgG
Cross-Reactivity:	Human, Mouse, Rat
Characteristics:	Monoclonal Antibodies
Purification:	Affinity purification

## Target Details

Target:	eEF1A1 (EEF1A1)
Alternative Name:	EEF1A1 ( <a href="#">EEF1A1 Products</a> )
Background:	This gene encodes an isoform of the alpha subunit of the elongation factor-1 complex, which is

## Target Details

responsible for the enzymatic delivery of aminoacyl tRNAs to the ribosome. This isoform (alpha 1) is expressed in brain, placenta, lung, liver, kidney, and pancreas, and the other isoform (alpha 2) is expressed in brain, heart and skeletal muscle. This isoform is identified as an autoantigen in 66 % of patients with Felty syndrome. This gene has been found to have multiple copies on many chromosomes, some of which, if not all, represent different pseudogenes. [provided by RefSeq, Jul 2008],CCS-3, CCS3, EE1A1, EEF-1, EEF1A, EF-Tu, EF1A, GRAF-1EF, HNGC:16303, LENG7, PTI1, eEF1A-1,Epigenetics & Nuclear Signaling,RNA Binding,Translation Control,EEF1A1

Molecular Weight: 50kDa

Gene ID: 1915

UniProt: [P68104](#)

## Application Details

Application Notes: WB,1:500 - 1:2000,IF,1:50 - 1:200

Restrictions: For Research Use only

## Handling

Format: Liquid

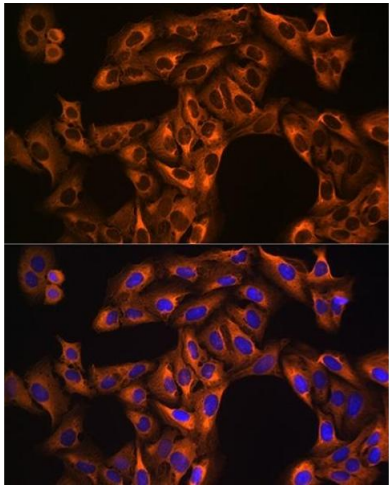
Buffer: PBS with 0.02 % sodium azide,0.05 % BSA,50 % glycerol, pH 7.3.

Preservative: Sodium azide

Precaution of Use: This product contains Sodium azide: a POISONOUS AND HAZARDOUS SUBSTANCE which should be handled by trained staff only.

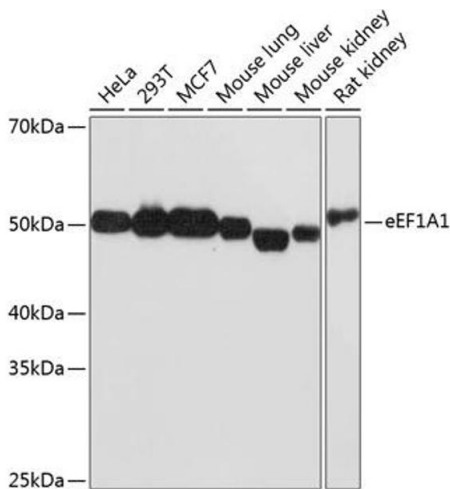
Storage: -20 °C

Storage Comment: Store at -20°C. Avoid freeze / thaw cycles.



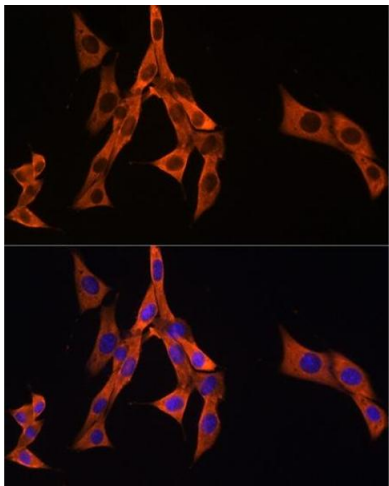
#### Immunohistochemistry

**Image 1.** Immunohistochemistry of paraffin-embedded mouse kidney using eEF1 Rabbit mAb (1545) at dilution of 1:200 (40x lens).



#### Western Blotting

**Image 2.** Western blot analysis of extracts of various cell lines, using eEF1 Rabbit mAb (1545) at 1:1000 dilution. Secondary antibody: HRP Goat Anti-Rabbit IgG (H+L) (ABIN1684268 and ABIN3020597) at 1:10000 dilution. Lysates/proteins: 25 µg per lane. Blocking buffer: 3 % nonfat dry milk in TBST. Detection: ECL Basic Kit (RM00020). Exposure time: 90s.



#### Immunohistochemistry

**Image 3.** Immunohistochemistry of paraffin-embedded human thyroid cancer using eEF1 Rabbit mAb (1545) at dilution of 1:200 (40x lens).

Please check the [product details page](#) for more images. Overall 4 images are available for ABIN7267021.