



[Go to Product page](#)

Datasheet for ABIN7267034
anti-EIF2S2 antibody (AA 1-175)

1 Image

Overview

Quantity:	100 µL
Target:	EIF2S2
Binding Specificity:	AA 1-175
Reactivity:	Human
Host:	Rabbit
Clonality:	Polyclonal
Conjugate:	This EIF2S2 antibody is un-conjugated
Application:	Western Blotting (WB)

Product Details

Purpose:	EIF2S2 Rabbit pAb
Immunogen:	Recombinant fusion protein containing a sequence corresponding to amino acids 1-175 of human EIF2S2 (NP_003899.2).
Sequence:	MSGDEMIFDP TMSKKKKKKK KPFMLDEEGD TQTEETQPSE TKEVEPEPTE DKDLEADEED TRKKDASDDL DDLNFFNQKK KKKKTKKIFD IDEAEGVKD LKIESDVQEP TEPEDDLDIM LGNKKKKKKK VKFPDEDEIL EKDEALEDED NKKDDGISFS NQTGPAWAGS ERDYT
Isotype:	IgG
Cross-Reactivity:	Human, Mouse, Rat
Characteristics:	Polyclonal Antibodies
Purification:	Affinity purification

Target Details

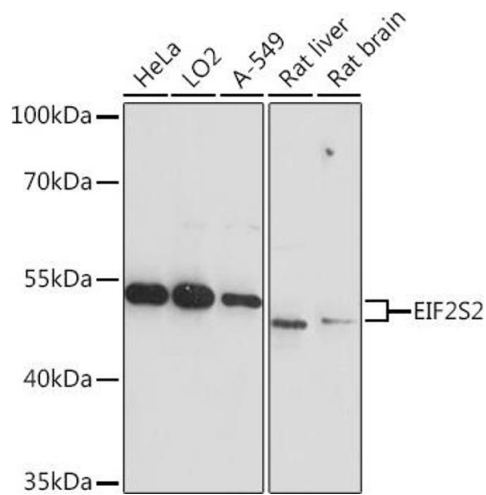
Target:	EIF2S2
Alternative Name:	EIF2S2 (EIF2S2 Products)
Background:	<p>Eukaryotic translation initiation factor 2 (EIF-2) functions in the early steps of protein synthesis by forming a ternary complex with GTP and initiator tRNA and binding to a 40S ribosomal subunit. EIF-2 is composed of three subunits, alpha, beta, and gamma, with the protein encoded by this gene representing the beta subunit. The beta subunit catalyzes the exchange of GDP for GTP, which recycles the EIF-2 complex for another round of initiation. Multiple transcript variants encoding different isoforms have been found for this gene.</p> <p>EIF2S2,EIF2,EIF2B,EIF2beta,PPP1R67,eIF-2-beta,Epigenetics & Nuclear Signaling,RNA Binding,Translation Control,Regulation of eIF2,EIF2S2</p>
Molecular Weight:	38kDa
Gene ID:	8894
UniProt:	P20042

Application Details

Application Notes:	WB,1:500 - 1:2000
Restrictions:	For Research Use only

Handling

Format:	Liquid
Buffer:	PBS with 0.02 % sodium azide,50 % glycerol, pH 7.3.
Preservative:	Sodium azide
Precaution of Use:	This product contains Sodium azide: a POISONOUS AND HAZARDOUS SUBSTANCE which should be handled by trained staff only.
Storage:	-20 °C
Storage Comment:	Store at -20°C. Avoid freeze / thaw cycles.



Western Blotting

Image 1. Western blot analysis of extracts of various cell lines, using EIF2S2 Rabbit pAb at 1:3000 dilution. Secondary antibody: HRP Goat Anti-Rabbit IgG (H+L) (ABIN1684268 and ABIN3020597) at 1:10000 dilution. Lysates/proteins: 25 µg per lane. Blocking buffer: 3 % nonfat dry milk in TBST. Detection: ECL Basic Kit (RM00020). Exposure time: 60s.