



[Go to Product page](#)

Datasheet for ABIN7267035

anti-EIF2A antibody

5 Images

Overview

Quantity:	100 µL
Target:	EIF2A
Reactivity:	Human
Host:	Rabbit
Clonality:	Monoclonal
Conjugate:	This EIF2A antibody is un-conjugated
Application:	Western Blotting (WB), Immunohistochemistry (IHC)

Product Details

Purpose:	eIF2A Rabbit mAb
Immunogen:	A synthesized peptide derived from human eIF2A
Isotype:	IgG
Cross-Reactivity:	Human, Mouse, Rat
Characteristics:	Monoclonal Antibodies
Purification:	Affinity purification

Target Details

Target:	EIF2A
Alternative Name:	EIF2A (EIF2A Products)
Background:	This gene encodes a eukaryotic translation initiation factor that catalyzes the formation of

Target Details

puromycin-sensitive 80 S preinitiation complexes and the poly(U)-directed synthesis of polyphenylalanine at low concentrations of Mg²⁺. This gene should not be confused with eIF2-alpha (EIF2S1, Gene ID: 1965), the alpha subunit of the eIF2 translation initiation complex. Although both of these proteins function in binding initiator tRNA to the 40 S ribosomal subunit, the encoded protein does so in a codon-dependent manner, whereas eIF2 complex requires GTP. Alternative splicing of this gene results in multiple transcript variants encoding different isoforms. [provided by RefSeq, Jan 2016],CDA02, EIF-2A, MST089, MSTP004, MSTP089,Epigenetics & Nuclear Signaling,EIF2A

Molecular Weight: 65kDa

Gene ID: 83939

UniProt: [Q9BY44](#)

Pathways: [Ribonucleoprotein Complex Subunit Organization](#), [ER-Nucleus Signaling](#), [Hepatitis C](#), [Methionine Biosynthetic Process](#), [Ribosome Assembly](#)

Application Details

Application Notes: WB,1:500 - 1:2000,IHC,1:50 - 1:200

Restrictions: For Research Use only

Handling

Format: Liquid

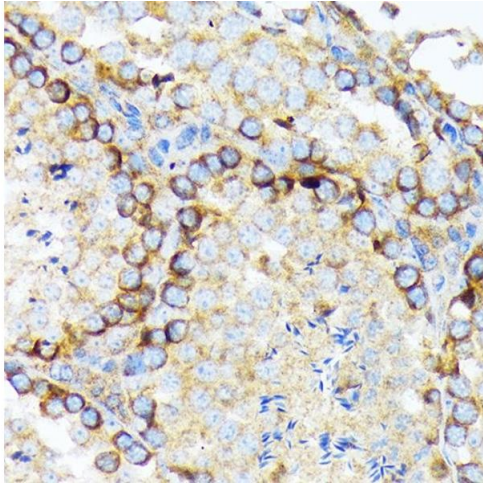
Buffer: PBS with 0.02 % sodium azide,0.05 % BSA,50 % glycerol, pH 7.3.

Preservative: Sodium azide

Precaution of Use: This product contains Sodium azide: a POISONOUS AND HAZARDOUS SUBSTANCE which should be handled by trained staff only.

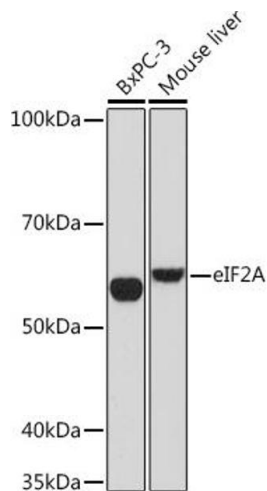
Storage: -20 °C

Storage Comment: Store at -20°C. Avoid freeze / thaw cycles.



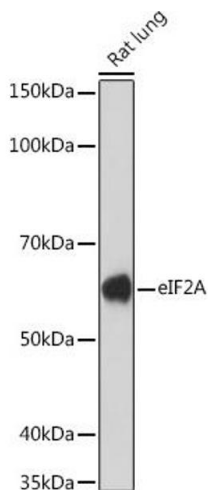
Immunohistochemistry

Image 1. Immunohistochemistry of paraffin-embedded mouse testis using eIF2A Rabbit mAb (ABIN7267035) at dilution of 1:100 (40x lens). Perform microwave antigen retrieval with 10 mM Tris/EDTA buffer pH 9.0 before commencing with IHC staining protocol.



Western Blotting

Image 2. Western blot analysis of extracts of various cell lines, using eIF2A Rabbit mAb (ABIN7267035) at 1:1000 dilution. Secondary antibody: HRP Goat Anti-Rabbit IgG (H+L) (ABIN1684268 and ABIN3020597) at 1:10000 dilution. Lysates/proteins: 25 µg per lane. Blocking buffer: 3 % nonfat dry milk in TBST. Detection: ECL Basic Kit (RM00020). Exposure time: 90s.



Western Blotting

Image 3. Western blot analysis of extracts of Rat lung, using eIF2A Rabbit mAb (ABIN7267035) at 1:1000 dilution. Secondary antibody: HRP Goat Anti-Rabbit IgG (H+L) (ABIN1684268 and ABIN3020597) at 1:10000 dilution. Lysates/proteins: 25 µg per lane. Blocking buffer: 3 % nonfat dry milk in TBST. Detection: ECL Enhanced Kit (RM00021). Exposure time: 3 min.

Please check the [product details page](#) for more images. Overall 5 images are available for ABIN7267035.