



Datasheet for ABIN7267038
anti-EIF2B5 antibody



[Go to Product page](#)

6 Images

Overview

Quantity:	100 µL
Target:	EIF2B5
Reactivity:	Human
Host:	Rabbit
Clonality:	Monoclonal
Conjugate:	This EIF2B5 antibody is un-conjugated
Application:	Western Blotting (WB), Immunohistochemistry (IHC), Immunofluorescence (IF)

Product Details

Purpose:	eIF2B epsilon (EIF2B5) Rabbit mAb
Immunogen:	A synthesized peptide derived from human eIF2B epsilon (EIF2B5) (EIF2B5)
Isotype:	IgG
Cross-Reactivity:	Human, Mouse, Rat
Characteristics:	Monoclonal Antibodies
Purification:	Affinity purification

Target Details

Target:	EIF2B5
Alternative Name:	EIF2B5 (EIF2B5 Products)
Background:	This gene encodes one of five subunits of eukaryotic translation initiation factor 2B (EIF2B), a

Target Details

GTP exchange factor for eukaryotic initiation factor 2 and an essential regulator for protein synthesis. Mutations in this gene and the genes encoding other EIF2B subunits have been associated with leukoencephalopathy with vanishing white matter. [provided by RefSeq, Nov 2009],CACH, CLE, EIF-2B, EIF2Bepsilon, LVWM,Endocrine & Metabolism,Epigenetics & Nuclear Signaling,Insulin Receptor Signaling Pathway,Translation Control,Translational Control_Regulation of eIF2,EIF2B5

Molecular Weight: 80kDa

Gene ID: 8893

UniProt: [Q13144](#)

Application Details

Application Notes: WB,1:500 - 1:2000,IHC,1:50 - 1:200,IF,1:50 - 1:200

Restrictions: For Research Use only

Handling

Format: Liquid

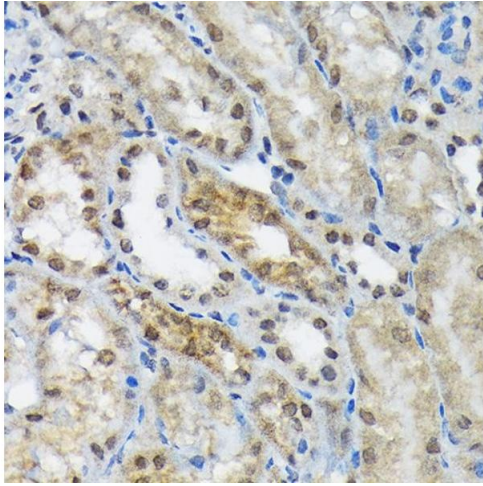
Buffer: PBS with 0.02 % sodium azide,0.05 % BSA,50 % glycerol, pH 7.3.

Preservative: Sodium azide

Precaution of Use: This product contains Sodium azide: a POISONOUS AND HAZARDOUS SUBSTANCE which should be handled by trained staff only.

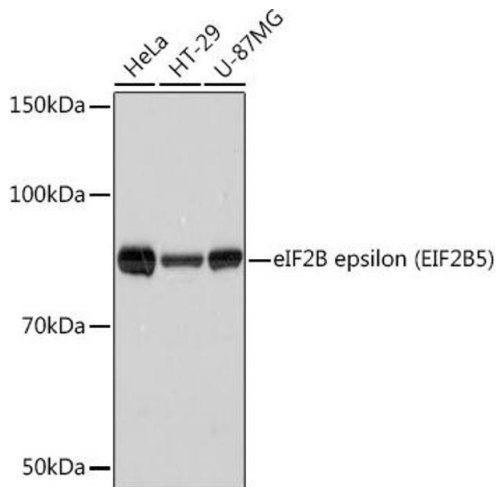
Storage: -20 °C

Storage Comment: Store at -20°C. Avoid freeze / thaw cycles.



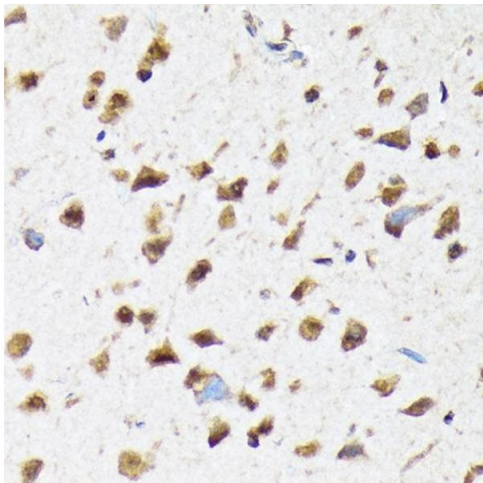
Immunohistochemistry

Image 1. Immunohistochemistry of paraffin-embedded mouse kidney using eIF2B epsilon (EIF2B5) (EIF2B5) Rabbit mAb (ABIN7267038) at dilution of 1:100 (40x lens). Perform microwave antigen retrieval with 10 mM Tris/EDTA buffer pH 9.0 before commencing with IHC staining protocol.



Western Blotting

Image 2. Western blot analysis of extracts of various cell lines, using eIF2B epsilon (EIF2B5) (EIF2B5) Rabbit mAb (ABIN7267038) at 1:1000 dilution. Secondary antibody: HRP Goat Anti-Rabbit IgG (H+L) (ABIN1684268 and ABIN3020597) at 1:10000 dilution. Lysates/proteins: 25 µg per lane. Blocking buffer: 3% nonfat dry milk in TBST. Detection: ECL Basic Kit (RM00020). Exposure time: 3s.



Immunohistochemistry

Image 3. Immunohistochemistry of paraffin-embedded rat brain using eIF2B epsilon (EIF2B5) (EIF2B5) Rabbit mAb (ABIN7267038) at dilution of 1:100 (40x lens). Perform microwave antigen retrieval with 10 mM Tris/EDTA buffer pH 9.0 before commencing with IHC staining protocol.

Please check the [product details page](#) for more images. Overall 6 images are available for ABIN7267038.