

Datasheet for ABIN7267039

anti-EIF2C3 antibody**2** Images[Go to Product page](#)

Overview

Quantity:	100 µL
Target:	EIF2C3
Reactivity:	Human
Host:	Rabbit
Clonality:	Monoclonal
Conjugate:	This EIF2C3 antibody is un-conjugated
Application:	Western Blotting (WB), Immunohistochemistry (IHC)

Product Details

Purpose:	eIF2C3 Rabbit mAb
Immunogen:	A synthesized peptide derived from human eIF2C3
Isotype:	IgG
Cross-Reactivity:	Human, Mouse, Rat
Characteristics:	Monoclonal Antibodies
Purification:	Affinity purification

Target Details

Target:	EIF2C3
Alternative Name:	AGO3 (EIF2C3 Products)
Background:	This gene encodes a member of the Argonaute family of proteins which play a role in RNA

Target Details

interference. The encoded protein is highly basic, contains a PAZ domain and a PIWI domain, and may play a role in short-interfering-RNA-mediated gene silencing. This gene is located on chromosome 1 in a tandem cluster of closely related family members including argonaute 4 and eukaryotic translation initiation factor 2C, 1. Two transcript variants encoding distinct isoforms have been identified for this gene. [provided by RefSeq, Jul 2008],EIF2C3,Epigenetics & Nuclear Signaling,RNA Binding,AGO3

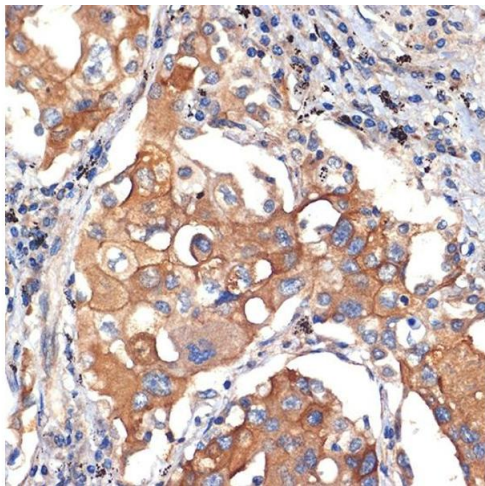
Molecular Weight:	97kDa
Gene ID:	192669
UniProt:	Q9H9G7
Pathways:	Fc-epsilon Receptor Signaling Pathway , Regulatory RNA Pathways , EGFR Signaling Pathway , Neurotrophin Signaling Pathway

Application Details

Application Notes:	WB,1:500 - 1:2000,IHC,1:50 - 1:200
Restrictions:	For Research Use only

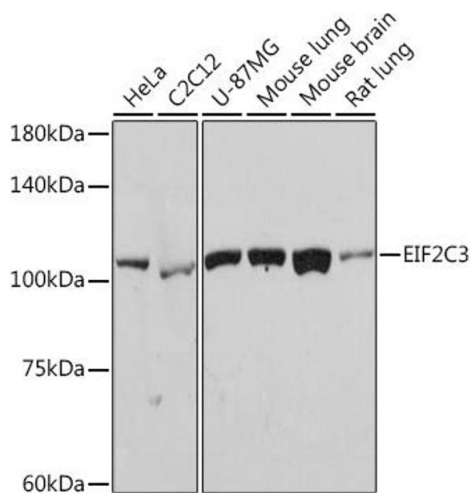
Handling

Format:	Liquid
Buffer:	PBS with 0.02 % sodium azide,0.05 % BSA,50 % glycerol, pH 7.3.
Preservative:	Sodium azide
Precaution of Use:	This product contains Sodium azide: a POISONOUS AND HAZARDOUS SUBSTANCE which should be handled by trained staff only.
Storage:	-20 °C
Storage Comment:	Store at -20°C. Avoid freeze / thaw cycles.



Immunohistochemistry

Image 1. Immunohistochemistry of paraffin-embedded human lung cancer using eIF2C3 Rabbit mAb (ABIN7267039) at dilution of 1:100 (40x lens). Perform microwave antigen retrieval with 10 mM Tris/EDTA buffer pH 9.0 before commencing with IHC staining protocol.



Western Blotting

Image 2. Western blot analysis of extracts of various cell lines, using eIF2C3 Rabbit mAb (ABIN7267039) at 1:1000 dilution. Secondary antibody: HRP Goat Anti-Rabbit IgG (H+L) (ABIN1684268 and ABIN3020597) at 1:10000 dilution. Lysates/proteins: 25 µg per lane. Blocking buffer: 3 % nonfat dry milk in TBST. Detection: ECL Basic Kit (RM00020). Exposure time: 180s.