

Datasheet for ABIN7267042

anti-EIF3B antibody

3 Images

[Go to Product page](#)

Overview

Quantity:	100 µL
Target:	EIF3B
Reactivity:	Human
Host:	Rabbit
Clonality:	Monoclonal
Conjugate:	This EIF3B antibody is un-conjugated
Application:	Western Blotting (WB), Immunofluorescence (IF)

Product Details

Purpose:	eIF3B Rabbit mAb
Immunogen:	A synthesized peptide derived from human eIF3B
Isotype:	IgG
Cross-Reactivity:	Human, Mouse, Rat
Characteristics:	Monoclonal Antibodies
Purification:	Affinity purification

Target Details

Target:	EIF3B
Alternative Name:	EIF3B (EIF3B Products)
Background:	RNA-binding component of the eukaryotic translation initiation factor 3 (eIF-3 complex, which is

Target Details

required for several steps in the initiation of protein synthesis. The eIF-3 complex associates with the 40S ribosome and facilitates the recruitment of eIF-1, eIF-1A, eIF-2:GTP:methionyl-tRNAⁱ and eIF-5 to form the 43S pre-initiation complex (43S PIC). The eIF-3 complex stimulates mRNA recruitment to the 43S PIC and scanning of the mRNA for AUG recognition. The eIF-3 complex is also required for disassembly and recycling of post-termination ribosomal complexes and subsequently prevents premature joining of the 40S and 60S ribosomal subunits prior to initiation. The eIF-3 complex specifically targets and initiates translation of a subset of mRNAs involved in cell proliferation, including cell cycling, differentiation and apoptosis, and uses different modes of RNA stem-loop binding to exert either translational activation or repression.,EIF3-ETA, EIF3-P110, EIF3-P116, EIF3S9, PRT1,Epigenetics & Nuclear Signaling,EIF3B

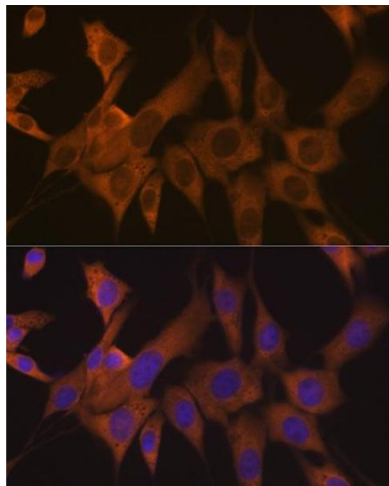
Molecular Weight:	116kDa
Gene ID:	8662
UniProt:	P55884
Pathways:	Ribonucleoprotein Complex Subunit Organization

Application Details

Application Notes:	WB,1:500 - 1:2000,IF,1:50 - 1:200
Restrictions:	For Research Use only

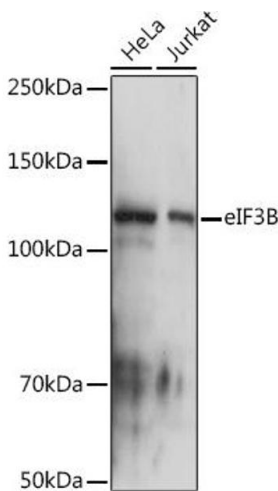
Handling

Format:	Liquid
Buffer:	PBS with 0.02 % sodium azide,0.05 % BSA,50 % glycerol, pH 7.3.
Preservative:	Sodium azide
Precaution of Use:	This product contains Sodium azide: a POISONOUS AND HAZARDOUS SUBSTANCE which should be handled by trained staff only.
Storage:	-20 °C
Storage Comment:	Store at -20°C. Avoid freeze / thaw cycles.



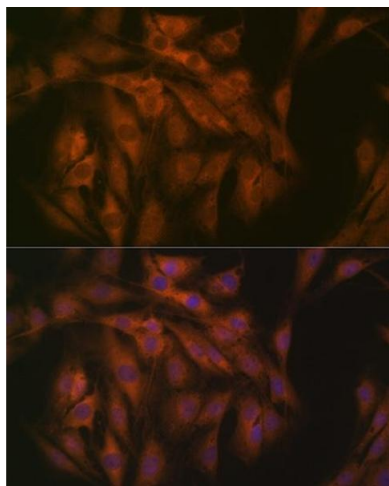
Immunofluorescence

Image 1. Immunofluorescence analysis of NIH-3T3 cells using eIF3B Rabbit mAb (ABIN7267042) at dilution of 1:100 (40x lens). Blue: DAPI for nuclear staining.



Western Blotting

Image 2. Western blot analysis of extracts of various cell lines, using eIF3B Rabbit mAb (ABIN7267042) at 1:1000 dilution. Secondary antibody: HRP Goat Anti-Rabbit IgG (H+L) (ABIN1684268 and ABIN3020597) at 1:10000 dilution. Lysates/proteins: 25 µg per lane. Blocking buffer: 3 % nonfat dry milk in TBST. Detection: ECL Basic Kit (RM00020). Exposure time: 1s.



Immunofluorescence

Image 3. Immunofluorescence analysis of C6 cells using eIF3B Rabbit mAb (ABIN7267042) at dilution of 1:100 (40x lens). Blue: DAPI for nuclear staining.