

Datasheet for ABIN7267055  
**anti-ERCC1 antibody**



[Go to Product page](#)

1 Image

## Overview

Quantity:	100 µL
Target:	ERCC1
Reactivity:	Human
Host:	Rabbit
Clonality:	Monoclonal
Conjugate:	This ERCC1 antibody is un-conjugated
Application:	Western Blotting (WB)

## Product Details

Purpose:	ERCC1 Rabbit mAb
Immunogen:	A synthesized peptide derived from human ERCC1
Isotype:	IgG
Cross-Reactivity:	Human
Characteristics:	Monoclonal Antibodies
Purification:	Affinity purification

## Target Details

Target:	ERCC1
Alternative Name:	ERCC1 ( <a href="#">ERCC1 Products</a> )
Background:	The product of this gene functions in the nucleotide excision repair pathway, and is required for

## Target Details

the repair of DNA lesions such as those induced by UV light or formed by electrophilic compounds including cisplatin. The encoded protein forms a heterodimer with the XPF endonuclease (also known as ERCC4), and the heterodimeric endonuclease catalyzes the 5' incision in the process of excising the DNA lesion. The heterodimeric endonuclease is also involved in recombinational DNA repair and in the repair of inter-strand crosslinks. Mutations in this gene result in cerebrooculofacioskeletal syndrome, and polymorphisms that alter expression of this gene may play a role in carcinogenesis. Multiple transcript variants encoding different isoforms have been found for this gene. The last exon of this gene overlaps with the CD3e molecule, epsilon associated protein gene on the opposite strand. [provided by RefSeq, Oct 2009],COFS4, RAD10, UV20,Cancer,DNA Damage & Repair,Epigenetics & Nuclear Signaling,Tumor biomarkers,ERCC1

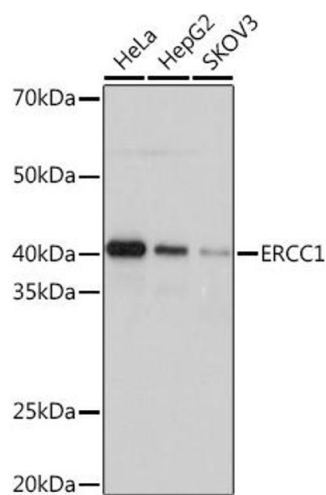
Molecular Weight:	36kDa
Gene ID:	2067
UniProt:	<a href="#">P07992</a>
Pathways:	<a href="#">DNA Damage Repair</a> , <a href="#">Production of Molecular Mediator of Immune Response</a>

## Application Details

Application Notes:	WB,1:500 - 1:2000
Restrictions:	For Research Use only

## Handling

Format:	Liquid
Buffer:	PBS with 0.02 % sodium azide,0.05 % BSA,50 % glycerol, pH 7.3.
Preservative:	Sodium azide
Precaution of Use:	This product contains Sodium azide: a POISONOUS AND HAZARDOUS SUBSTANCE which should be handled by trained staff only.
Storage:	-20 °C
Storage Comment:	Store at -20°C. Avoid freeze / thaw cycles.



Western Blotting

**Image 1.** Western blot analysis of extracts of various cell lines, using ERCC1 Rabbit mAb (ABIN7267055) at 1:1000 dilution. Secondary antibody: HRP Goat Anti-Rabbit IgG (H+L) (ABIN1684268 and ABIN3020597) at 1:10000 dilution. Lysates/proteins: 25 µg per lane. Blocking buffer: 3 % nonfat dry milk in TBST. Detection: ECL Basic Kit (RM00020). Exposure time: 3s.