

Datasheet for ABIN7267066
anti-EXTL2 antibody (AA 41-330)



[Go to Product page](#)

1 Image

Overview

Quantity:	100 µL
Target:	EXTL2
Binding Specificity:	AA 41-330
Reactivity:	Human
Host:	Rabbit
Clonality:	Polyclonal
Conjugate:	This EXTL2 antibody is un-conjugated
Application:	Western Blotting (WB)

Product Details

Purpose:	EXTL2 Rabbit pAb
Immunogen:	Recombinant fusion protein containing a sequence corresponding to amino acids 41-330 of human EXTL2 (NP_001430.1).
Sequence:	PSVKEDKMLM LRREIKSQGK STMDSFTLIM QTYNRTDLLL KLLNHYQAVP NLHKVIVVWN NIGEKAPDEL WNSLGPHPIP VIFKQQTANR MRNRLQVFPE LETNAVLMVD DDTLISTPDL VFAFSVWQQF PDQIVGFVPR KHVSTSSGIY SYGSFEMQAP GSGNGDQYSM VLIGASFFNS KYLELFQRQP AAVHALIDDT QNCDDIAMNF IIAKHIGKTS GIFVKPVNMD NLEKETNSGY SGMWHRAEHA LQRSYCINKL VNIYDSMPLR YSNIMISQFG FPYANYKRKI
Isotype:	IgG
Cross-Reactivity:	Human, Mouse
Characteristics:	Polyclonal Antibodies

Product Details

Purification: Affinity purification

Target Details

Target: EXTL2

Alternative Name: EXTL2 ([EXTL2 Products](#))

Background: Glycosyltransferase required for the biosynthesis of heparan-sulfate and responsible for the alternating addition of beta-1-4-linked glucuronic acid (GlcA and alpha-1-4-linked N-acetylglucosamine (GlcNAc units to nascent heparan sulfate chains.,EXTL2,EXTR2,Cancer,Tumor suppressors,Signal Transduction,Cell Biology & Developmental Biology,Cytoskeleton,EXTL2

Molecular Weight: 37kDa

Gene ID: 2135

UniProt: [Q9UBQ6](#)

Application Details

Application Notes: WB,1:500 - 1:2000

Restrictions: For Research Use only

Handling

Format: Liquid

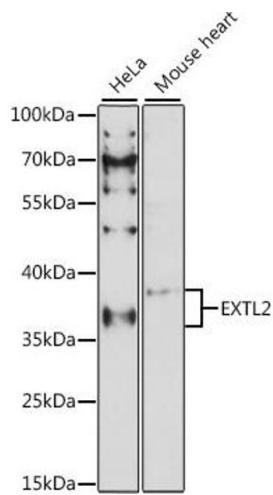
Buffer: PBS with 0.02 % sodium azide,50 % glycerol, pH 7.3.

Preservative: Sodium azide

Precaution of Use: This product contains Sodium azide: a POISONOUS AND HAZARDOUS SUBSTANCE which should be handled by trained staff only.

Storage: -20 °C

Storage Comment: Store at -20°C. Avoid freeze / thaw cycles.



Western Blotting

Image 1. Western blot analysis of extracts of various cell lines, using EXTL2 antibody (ABIN7267066) at 1:1000 dilution. Secondary antibody: HRP Goat Anti-Rabbit IgG (H+L) (ABIN1684268 and ABIN3020597) at 1:10000 dilution. Lysates/proteins: 25 µg per lane. Blocking buffer: 3 % nonfat dry milk in TBST. Detection: ECL Basic Kit (RM00020). Exposure time: 90s.