



[Go to Product page](#)

Datasheet for ABIN7267099  
**anti-FAM105B antibody**

3 Images

### Overview

Quantity:	100 µL
Target:	FAM105B
Reactivity:	Human
Host:	Rabbit
Clonality:	Polyclonal
Conjugate:	This FAM105B antibody is un-conjugated
Application:	Western Blotting (WB), Immunofluorescence (IF)

### Product Details

Purpose:	OTULIN Rabbit pAb
Immunogen:	Recombinant protein of human OTULIN.
Isotype:	IgG
Cross-Reactivity:	Human, Mouse, Rat
Characteristics:	Polyclonal Antibodies
Purification:	Affinity purification

### Target Details

Target:	FAM105B
Alternative Name:	OTULIN ( <a href="#">FAM105B Products</a> )
Background:	This gene encodes a member of the peptidase C65 family of ubiquitin isopeptidases. Members

## Target Details

---

of this family remove ubiquitin from proteins. The encoded enzyme specifically recognizes and removes M1(Met1)-linked, or linear, ubiquitin chains from protein substrates. Linear ubiquitin chains are known to regulate the NF-kappa B signaling pathway in the context of immunity and inflammation. Mutations in this gene cause a potentially fatal autoinflammatory syndrome in human patients.,GUM, AIPDS, FAM105B,OTULIN

---

Molecular Weight: 40kDa

---

Gene ID: 90268

---

UniProt: [Q96BN8](#)

## Application Details

---

Application Notes: WB,1:500 - 1:2000,IF,1:50 - 1:200

---

Restrictions: For Research Use only

## Handling

---

Format: Liquid

---

Buffer: PBS with 0.02 % sodium azide,50 % glycerol, pH 7.3.

---

Preservative: Sodium azide

---

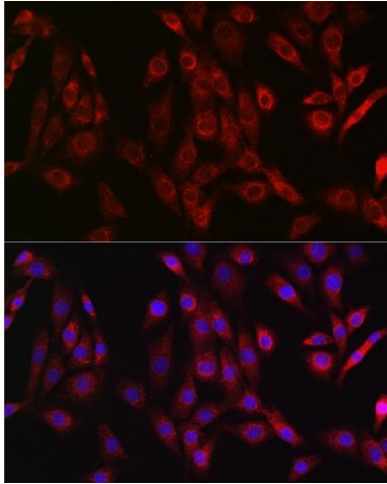
Precaution of Use: This product contains Sodium azide: a POISONOUS AND HAZARDOUS SUBSTANCE which should be handled by trained staff only.

---

Storage: -20 °C

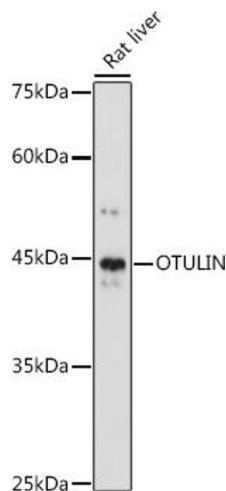
---

Storage Comment: Store at -20°C. Avoid freeze / thaw cycles.



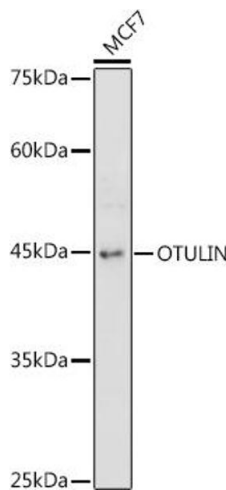
### Immunofluorescence

**Image 1.** Immunofluorescence analysis of NIH/3T3 cells using OTULIN Rabbit pAb (ABIN7267099) at dilution of 1:50 (40x lens). Blue: DAPI for nuclear staining.



### Western Blotting

**Image 2.** Western blot analysis of extracts of Rat liver, using OTULIN antibody (ABIN7267099) at 1:1000 dilution. Secondary antibody: HRP Goat Anti-Rabbit IgG (H+L) (ABIN1684268 and ABIN3020597) at 1:10000 dilution. Lysates/proteins: 25 µg per lane. Blocking buffer: 3 % nonfat dry milk in TBST. Detection: ECL Basic Kit (RM00020). Exposure time: 60s.



### Western Blotting

**Image 3.** Western blot analysis of extracts of MCF7 cells, using OTULIN antibody (ABIN7267099) at 1:1000 dilution. Secondary antibody: HRP Goat Anti-Rabbit IgG (H+L) (ABIN1684268 and ABIN3020597) at 1:10000 dilution. Lysates/proteins: 25 µg per lane. Blocking buffer: 3 % nonfat dry milk in TBST. Detection: ECL Basic Kit (RM00020). Exposure time: 180s.