



[Go to Product page](#)

Datasheet for ABIN7267119

## anti-FAM65A antibody (AA 1004-1223)

### 1 Image

#### Overview

Quantity:	100 µL
Target:	FAM65A
Binding Specificity:	AA 1004-1223
Reactivity:	Human
Host:	Rabbit
Clonality:	Polyclonal
Conjugate:	This FAM65A antibody is un-conjugated
Application:	Western Blotting (WB)

#### Product Details

Purpose:	FAM65A Rabbit pAb
Immunogen:	Recombinant fusion protein containing a sequence corresponding to amino acids 1004-1223 of human FAM65A (NP_001180451.1).
Sequence:	LSLRQPGLAE AVCVKFLEDA LGQKLPRRPQ PGPGEQLTVF QFWSFVETLD SPTMEAYVTE TAEVLLVRN LNSDDQAVVL KALRLAPEGR LRRDGLRALS SLLVHGNNKV MAAVSTQLRS LSLGPTFRER ALLCFLDQLE DEDVQTRVAG CLALGCIKAP EGIEPLVYLC QTDTEAVREA ARQSLQCCGE EGQSAHRRLE ESLDALPRIF GPGSMASTAF
Isotype:	IgG
Cross-Reactivity:	Mouse
Characteristics:	Polyclonal Antibodies

## Product Details

---

Purification: Affinity purification

## Target Details

---

Target: FAM65A

Alternative Name: FAM65A ([FAM65A Products](#))

Background: Downstream effector protein for Rho-type small GTPases that plays a role in cell polarity and directional migration. Acts as an adapter protein, linking active Rho proteins to STK24 and STK26 kinases, and hence positively regulates Golgi reorientation in polarized cell migration upon Rho activation. Involved in the subcellular relocation of STK26 from the Golgi to cytoplasm punctae in a Rho- and PDCD10-dependent manner upon serum stimulation.,RIPOR1,FAM65A,Cell Biology & Developmental Biology,FAM65A

Molecular Weight: 131kDa/132kDa/133kDa/134kDa

Gene ID: 79567

UniProt: [Q6ZS17](#)

## Application Details

---

Application Notes: WB,1:500 - 1:2000

Restrictions: For Research Use only

## Handling

---

Format: Liquid

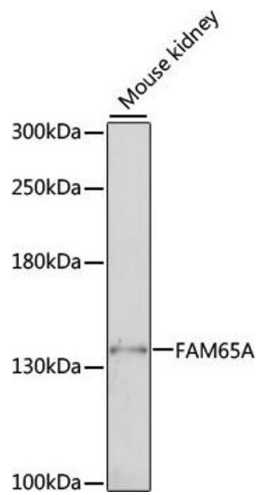
Buffer: PBS with 0.02 % sodium azide,50 % glycerol, pH 7.3.

Preservative: Sodium azide

Precaution of Use: This product contains Sodium azide: a POISONOUS AND HAZARDOUS SUBSTANCE which should be handled by trained staff only.

Storage: -20 °C

Storage Comment: Store at -20°C. Avoid freeze / thaw cycles.



### Western Blotting

**Image 1.** Western blot analysis of extracts of mouse kidney, using FA antibody (ABIN7267119) at 1:1000 dilution. Secondary antibody: HRP Goat Anti-Rabbit IgG (H+L) (ABIN1684268 and ABIN3020597) at 1:10000 dilution. Lysates/proteins: 25 µg per lane. Blocking buffer: 3 % nonfat dry milk in TBST. Detection: ECL Basic Kit (RM00020). Exposure time: 1s.