



[Go to Product page](#)

Datasheet for ABIN7267120

anti-FAM83A antibody (AA 1-160)

1 Image

Overview

Quantity:	100 µL
Target:	FAM83A
Binding Specificity:	AA 1-160
Reactivity:	Human
Host:	Rabbit
Clonality:	Polyclonal
Conjugate:	This FAM83A antibody is un-conjugated
Application:	Western Blotting (WB)

Product Details

Purpose:	FAM83A Rabbit pAb
Immunogen:	Recombinant fusion protein containing a sequence corresponding to amino acids 1-160 of human FAM83A (NP_116288.2).
Sequence:	MSRSRHLGKI RKRLDVDKSSQ WVRPARADFS DNESARLATD ALLDGGSEAY WRVLSQEGEV DFLSSVEAQY IQAQAREPPC PPDTLGGAEA GPKGLDSSSL QSGTYFPVAS EGSEPALLHS WASAEKPYLK EKSSATVYFQ TVKHNNIRD L VRRRCITRTSQ
Isotype:	IgG
Cross-Reactivity:	Human, Mouse, Rat
Characteristics:	Polyclonal Antibodies
Purification:	Affinity purification

Target Details

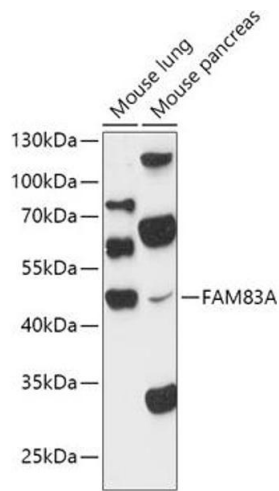
Target:	FAM83A
Alternative Name:	FAM83A (FAM83A Products)
Background:	Probable proto-oncogene that functions in the epidermal growth factor receptor/EGFR signaling pathway. Activates both RAS/MAPK and PI3K/AKT/TOR signaling cascades downstream of EGFR. Required for the RAS/MAPK signaling cascade activation upon EGFR stimulation, it also activates both signaling cascades independently of EGFR activation.,FAM83A,BJ-TSA-9,Cancer,Tumor biomarkers,FAM83A
Molecular Weight:	32kDa/40kDa/47kDa
Gene ID:	84985
UniProt:	Q86UY5

Application Details

Application Notes:	WB,1:500 - 1:2000
Restrictions:	For Research Use only

Handling

Format:	Liquid
Buffer:	PBS with 0.02 % sodium azide,50 % glycerol, pH 7.3.
Preservative:	Sodium azide
Precaution of Use:	This product contains Sodium azide: a POISONOUS AND HAZARDOUS SUBSTANCE which should be handled by trained staff only.
Storage:	-20 °C
Storage Comment:	Store at -20°C. Avoid freeze / thaw cycles.



Western Blotting

Image 1. Western blot analysis of extracts of various cell lines, using FA antibody (ABIN7267120) at 1:1000 dilution. Secondary antibody: HRP Goat Anti-Rabbit IgG (H+L) (ABIN1684268 and ABIN3020597) at 1:10000 dilution. Lysates/proteins: 25 µg per lane. Blocking buffer: 3 % nonfat dry milk in TBST. Detection: ECL Basic Kit (RM00020). Exposure time: 30s.