



[Go to Product page](#)

Datasheet for ABIN7267144

anti-FASTKD5 antibody (AA 495-764)

1 Image

Overview

Quantity:	100 µL
Target:	FASTKD5
Binding Specificity:	AA 495-764
Reactivity:	Human
Host:	Rabbit
Clonality:	Polyclonal
Conjugate:	This FASTKD5 antibody is un-conjugated
Application:	Western Blotting (WB), Immunofluorescence (IF)

Product Details

Purpose:	FASTKD5 Rabbit pAb
Immunogen:	Recombinant fusion protein containing a sequence corresponding to amino acids 495-764 of human FASTKD5 (NP_068598.1).
Sequence:	SPGFVRLAQE RTKFDLLKEL YTLDGTVGIE CPDYRGNRLS THLQQEGSEL LWYLAEKDMN SKPEFLETVF LLETMLGGPQ YVKHHMILPH TRSSDLEVQL DVNLKPLPFN REATPAENVA KLRLEHVGVS LTDDL MNKLL K GKARGHFQG KTESEPGQP MELENKA AVP LGGFLCNVAD KSGAMEMAGL CPAACMQTPR MKLAVQFTNR NQYCYGSRDL LGLHNMKRRQ LARLGYRVVE LSYWEWLPLL KRTRLEKLAF LHEKVFTSAL
Isotype:	IgG
Cross-Reactivity:	Human, Mouse, Rat
Characteristics:	Polyclonal Antibodies

Product Details

Purification: Affinity purification

Target Details

Target: FASTKD5

Alternative Name: FASTKD5 ([FASTKD5 Products](#))

Background: Plays an important role in the processing of non-canonical mitochondrial mRNA precursors.,dJ1187M17.5,FASTKD5,Signal Transduction,Kinase,Cell Biology & Developmental Biology,Apoptosis,FASTKD5

Gene ID: 60493

UniProt: [Q7L8L6](#)

Pathways: [SARS-CoV-2 Protein Interactome](#)

Application Details

Application Notes: WB,1:500 - 1:2000,IF,1:50 - 1:200

Restrictions: For Research Use only

Handling

Format: Liquid

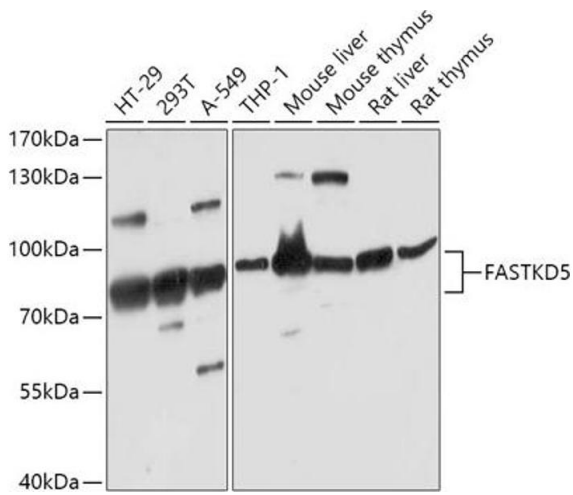
Buffer: PBS with 0.02 % sodium azide,50 % glycerol, pH 7.3.

Preservative: Sodium azide

Precaution of Use: This product contains Sodium azide: a POISONOUS AND HAZARDOUS SUBSTANCE which should be handled by trained staff only.

Storage: -20 °C

Storage Comment: Store at -20°C. Avoid freeze / thaw cycles.



Western Blotting

Image 1. Western blot analysis of extracts of various cell lines, using F antibody (ABIN7267144) at 1:1000 dilution. Secondary antibody: HRP Goat Anti-Rabbit IgG (H+L) (ABIN1684268 and ABIN3020597) at 1:10000 dilution. Lysates/proteins: 25 µg per lane. Blocking buffer: 3 % nonfat dry milk in TBST. Detection: ECL Basic Kit (RM00020). Exposure time: 90s.