



[Go to Product page](#)

Datasheet for ABIN7267162

## anti-FCF1 antibody

### 4 Images

#### Overview

Quantity:	100 µL
Target:	FCF1
Reactivity:	Human
Host:	Rabbit
Clonality:	Polyclonal
Conjugate:	This FCF1 antibody is un-conjugated
Application:	Immunofluorescence (IF), Western Blotting (WB), Immunohistochemistry (IHC)

#### Product Details

Purpose:	FCF1 Rabbit pAb
Immunogen:	A synthetic peptide of human FCF1.
Isotype:	IgG
Cross-Reactivity:	Human, Rat
Characteristics:	Polyclonal Antibodies
Purification:	Affinity purification

#### Target Details

Target:	FCF1
Alternative Name:	FCF1 ( <a href="#">FCF1 Products</a> )
Background:	Essential protein involved in pre-rRNA processing and 40S ribosomal subunit

## Target Details

assembly.,FCF1,Bka,C14orf111,CGI-35,UTP24,Epigenetics & Nuclear Signaling,RNA Binding,FCF1

Gene ID: 51077

UniProt: [Q9Y324](#)

## Application Details

Application Notes: WB,1:500 - 1:2000,IHC,1:50 - 1:200,IF,1:50 - 1:200

Restrictions: For Research Use only

## Handling

Format: Liquid

Buffer: PBS with 0.02 % sodium azide,50 % glycerol, pH 7.3.

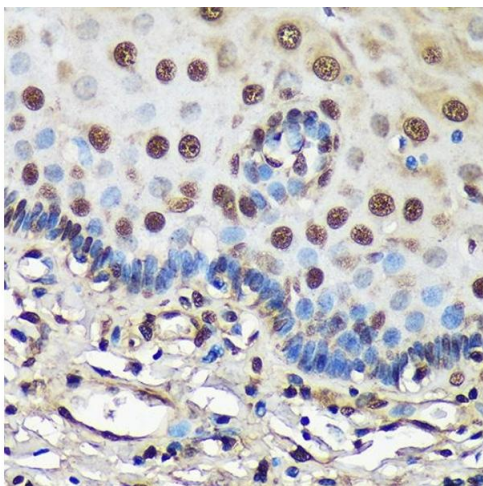
Preservative: Sodium azide

Precaution of Use: This product contains Sodium azide: a POISONOUS AND HAZARDOUS SUBSTANCE which should be handled by trained staff only.

Storage: -20 °C

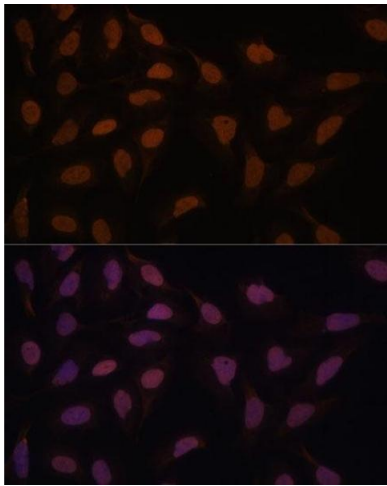
Storage Comment: Store at -20°C. Avoid freeze / thaw cycles.

## Images



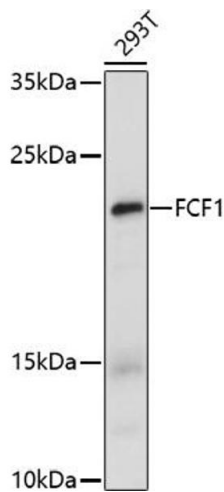
### Immunohistochemistry

**Image 1.** Immunohistochemistry of paraffin-embedded Human esophageal using FCF1 Rabbit pAb (ABIN7267162) at dilution of 1:100 (40x lens). Perform microwave antigen retrieval with 10 mM PBS buffer pH 7.2 before commencing with IHC staining protocol.



### Immunofluorescence

**Image 2.** Immunofluorescence analysis of U-2 OS cells using FCF1 antibody (ABIN7267162) at dilution of 1:100. Blue: DAPI for nuclear staining.



### Western Blotting

**Image 3.** Western blot analysis of extracts of 293T cells, using FCF1 antibody (ABIN7267162) at 1:1000 dilution. Secondary antibody: HRP Goat Anti-Rabbit IgG (H+L) (ABIN1684268 and ABIN3020597) at 1:10000 dilution. Lysates/proteins: 25 µg per lane. Blocking buffer: 3 % nonfat dry milk in TBST. Detection: ECL Enhanced Kit (RM00021). Exposure time: 100s.

Please check the [product details page](#) for more images. Overall 4 images are available for ABIN7267162.