

Datasheet for ABIN7267165
anti-FEM1A antibody (AA 100-300)[Go to Product page](#)

1 Image

Overview

Quantity:	100 µL
Target:	FEM1A
Binding Specificity:	AA 100-300
Reactivity:	Human
Host:	Rabbit
Clonality:	Polyclonal
Conjugate:	This FEM1A antibody is un-conjugated
Application:	Western Blotting (WB)

Product Details

Purpose:	FEM1A Rabbit pAb
Immunogen:	Recombinant fusion protein containing a sequence corresponding to amino acids 100-300 of human FEM1A (NP_061178.1).
Sequence:	RSLLRRGASV NRTTRTNSTP LRAACFDGHL EVVRYLVGEH QADLEVANRH GHTCLMISCY KGHREIARYL LEQGAQVNRR SAKGNTALHD CAESGSLEIL QLLLGCKARM ERDGYGMTPL LAASVTGHTN IVEYLIQEQP GQEQVAGGEA QPGLPQEDPS TSQGCAQPQG APCCSSSPPEE PLNGESYESC CPTSREAAVE A
Isotype:	IgG
Cross-Reactivity:	Human, Mouse
Characteristics:	Polyclonal Antibodies

Product Details

Purification: Affinity purification

Target Details

Target: FEM1A

Alternative Name: FEM1A ([FEM1A Products](#))

Background: Substrate-recognition component of a Cul2-RING (CRL2 E3 ubiquitin-protein ligase complex of the DesCEND (destruction via C-end degrons pathway, which recognizes a C-degron located at the extreme C terminus of target proteins, leading to their ubiquitination and degradation. The C-degron recognized by the DesCEND pathway is usually a motif of less than ten residues and can be present in full-length proteins, truncated proteins or proteolytically cleaved forms. The CRL2(FEM1A complex specifically recognizes proteins with an arginine at the C-terminus: recognizes and binds proteins ending with -Lys/Arg-Xaa-Arg and -Lys/Arg-Xaa-Xaa-Arg C-degrons, such as SIL1 or OR51B2, leading to their ubiquitination and degradation. Promotes ubiquitination and degradation of SLBP. Involved in PGE2-EP4-mediated inhibition of inflammation of macrophages via interaction with NFKB1 and PTGER4 (By similarity. Promotes inflammation in brain microglia through MAP2K4/MKK4-mediated signaling (By similarity.,FEM1A,EPRAP,Cell Biology & Developmental Biology,Apoptosis,Caspases,FEM1A

Molecular Weight: 73kDa

Gene ID: 55527

UniProt: [Q9BSK4](#)

Application Details

Application Notes: WB,1:500 - 1:2000

Restrictions: For Research Use only

Handling

Format: Liquid

Buffer: PBS with 0.02 % sodium azide,50 % glycerol, pH 7.3.

Preservative: Sodium azide

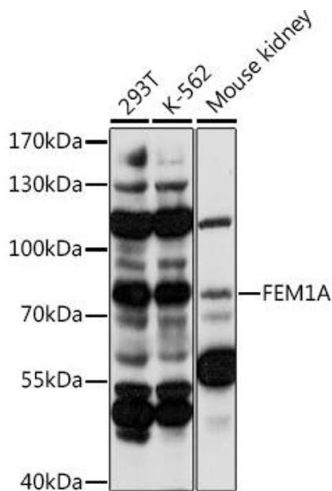
Precaution of Use: This product contains Sodium azide: a POISONOUS AND HAZARDOUS SUBSTANCE which should be handled by trained staff only.

Handling

Storage: -20 °C

Storage Comment: Store at -20°C. Avoid freeze / thaw cycles.

Images



Western Blotting

Image 1. Western blot analysis of extracts of various cell lines, using FEM1A antibody (ABIN7267165) at 1:1000 dilution. Secondary antibody: HRP Goat Anti-Rabbit IgG (H+L) (ABIN1684268 and ABIN3020597) at 1:10000 dilution. Lysates/proteins: 25 µg per lane. Blocking buffer: 3 % nonfat dry milk in TBST. Detection: ECL Basic Kit (RM00020). Exposure time: 60s.