

Datasheet for ABIN7267168

**anti-FTH1 antibody**

## 4 Images

[Go to Product page](#)

## Overview

Quantity:	100 µL
Target:	FTH1
Reactivity:	Human
Host:	Rabbit
Clonality:	Monoclonal
Conjugate:	This FTH1 antibody is un-conjugated
Application:	Western Blotting (WB), Immunohistochemistry (IHC)

## Product Details

Purpose:	Ferritin Heavy Chain Rabbit mAb
Immunogen:	A synthesized peptide derived from human Ferritin Heavy Chain.
Isotype:	IgG
Cross-Reactivity:	Human, Mouse, Rat
Characteristics:	Monoclonal Antibodies
Purification:	Affinity purification

## Target Details

Target:	FTH1
Alternative Name:	FTH1 ( <a href="#">FTH1 Products</a> )
Background:	This gene encodes the heavy subunit of ferritin, the major intracellular iron storage protein in

## Target Details

prokaryotes and eukaryotes. It is composed of 24 subunits of the heavy and light ferritin chains. Variation in ferritin subunit composition may affect the rates of iron uptake and release in different tissues. A major function of ferritin is the storage of iron in a soluble and nontoxic state. Defects in ferritin proteins are associated with several neurodegenerative diseases. This gene has multiple pseudogenes. Several alternatively spliced transcript variants have been observed, but their biological validity has not been determined. [provided by RefSeq, Jul 2008],FHC,FTH,FTHL6,HFE5,PIG15,PLIF,Ferritin,FTH1,Blood,Blood\_Serum Proteins,Cancer,Cardiovascular,Endocrine & Metabolism,Mitochondrial metabolism,Mitochondrial metabolism\_Mitochondrial markers,Neurodegenerative Diseases,Neurodegenerative Diseases\_Amyloid Plaque and Neurofibrillary Tangle Formation in Alzheimers Disease,Neuroscience,Signal Transduction,FTH1

Molecular Weight: 21kDa

Gene ID: 2495

UniProt: [P02794](#)

Pathways: [Transition Metal Ion Homeostasis](#)

## Application Details

Application Notes: WB,1:500 - 1:2000,IHC,1:50 - 1:200

Restrictions: For Research Use only

## Handling

Format: Liquid

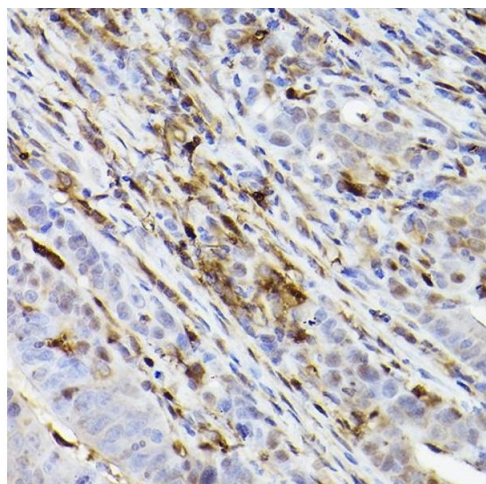
Buffer: PBS with 0.02 % sodium azide,0.05 % BSA,50 % glycerol, pH 7.3.

Preservative: Sodium azide

Precaution of Use: This product contains Sodium azide: a POISONOUS AND HAZARDOUS SUBSTANCE which should be handled by trained staff only.

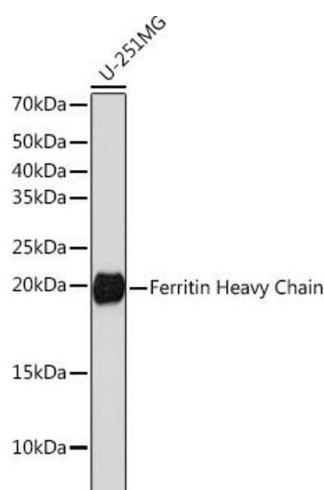
Storage: -20 °C

Storage Comment: Store at -20°C. Avoid freeze / thaw cycles.



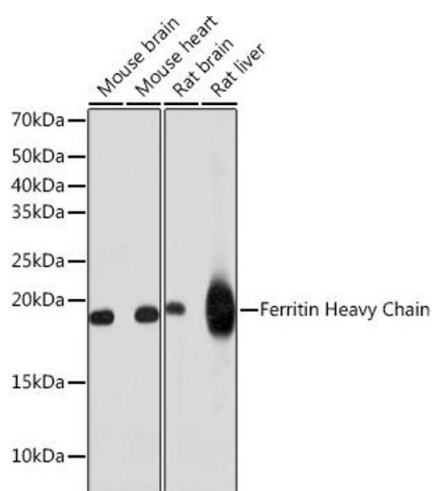
### Immunohistochemistry

**Image 1.** Immunohistochemistry of paraffin-embedded human colon carcinoma using Ferritin Heavy Chain Rabbit mAb (ABIN7267168) at dilution of 1:100 (40x lens). Perform high pressure antigen retrieval with 10 mM citrate buffer pH 6.0 before commencing with IHC staining protocol.



### Western Blotting

**Image 2.** Western blot analysis of extracts of U-251MG cells, using Ferritin Heavy Chain antibody (ABIN7267168) at 1:1000 dilution. Secondary antibody: HRP Goat Anti-Rabbit IgG (H+L) (ABIN1684268 and ABIN3020597) at 1:10000 dilution. Lysates/proteins: 25 µg per lane. Blocking buffer: 3 % nonfat dry milk in TBST. Detection: ECL Basic Kit (RM00020). Exposure time: 3 min.



### Western Blotting

**Image 3.** Western blot analysis of extracts of various cell lines, using Ferritin Heavy Chain antibody (ABIN7267168) at 1:1000 dilution. Secondary antibody: HRP Goat Anti-Rabbit IgG (H+L) (ABIN1684268 and ABIN3020597) at 1:10000 dilution. Lysates/proteins: 25 µg per lane. Blocking buffer: 3 % nonfat dry milk in TBST. Detection: ECL Basic Kit (RM00020). Exposure time: 10s.

Please check the [product details page](#) for more images. Overall 4 images are available for ABIN7267168.