

Datasheet for ABIN7267176  
**anti-Fibrillin 1 antibody (AA 360-460)**

## 5 Images

[Go to Product page](#)

## Overview

Quantity:	100 µL
Target:	Fibrillin 1 (FBN1)
Binding Specificity:	AA 360-460
Reactivity:	Human
Host:	Rabbit
Clonality:	Polyclonal
Conjugate:	This Fibrillin 1 antibody is un-conjugated
Application:	Western Blotting (WB), Immunofluorescence (IF)

## Product Details

Purpose:	FBN1 Rabbit pAb
Immunogen:	Recombinant fusion protein containing a sequence corresponding to amino acids 360-460 of human FBN1 (NP_000129.3).
Sequence:	CDAGRCWSPG VTVAPEMCPI RATEDFNKLK SVPMVIPGRP EYPPPLGPI PPVLPVPPGF PPGPQIPVPR PPVEYLYPSR EPPRVLPVNV TDYCQLVRYL C
Isotype:	IgG
Cross-Reactivity:	Mouse, Rat
Characteristics:	Polyclonal Antibodies
Purification:	Affinity purification

## Target Details

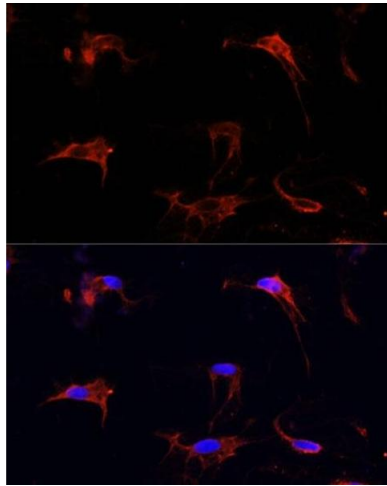
Target:	Fibrillin 1 (FBN1)
Alternative Name:	FBN1 ( <a href="#">FBN1 Products</a> )
Background:	<p>This gene encodes a member of the fibrillin family of proteins. The encoded preproprotein is proteolytically processed to generate two proteins including the extracellular matrix component fibrillin-1 and the protein hormone asprosin. Fibrillin-1 is an extracellular matrix glycoprotein that serves as a structural component of calcium-binding microfibrils. These microfibrils provide force-bearing structural support in elastic and nonelastic connective tissue throughout the body. Asprosin, secreted by white adipose tissue, has been shown to regulate glucose homeostasis. Mutations in this gene are associated with Marfan syndrome and the related MASS phenotype, as well as ectopia lentis syndrome, Weill-Marchesani syndrome, Shprintzen-Goldberg syndrome and neonatal progeroid syndrome.,FBN1,ACMICD,ECTOL1,FBN,GPHYSD2,MASS,MFLS,MFS1,OCTD,SGS,SSKS,WMS,WMS2,Signal Transduction,Cell Biology &amp; Developmental Biology,Cytoskeleton,Extracellular Matrix,FBN1</p>
Molecular Weight:	312kDa
Gene ID:	2200
UniProt:	<a href="#">P35555</a>
Pathways:	<a href="#">Maintenance of Protein Location</a> , <a href="#">SARS-CoV-2 Protein Interactome</a>

## Application Details

Application Notes:	WB,1:500 - 1:2000,IF,1:50 - 1:200
Restrictions:	For Research Use only

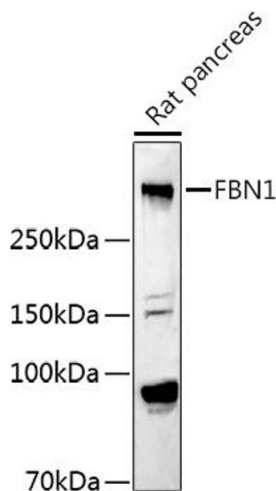
## Handling

Format:	Liquid
Buffer:	PBS with 0.02 % sodium azide,50 % glycerol, pH 7.3.
Preservative:	Sodium azide
Precaution of Use:	This product contains Sodium azide: a POISONOUS AND HAZARDOUS SUBSTANCE which should be handled by trained staff only.
Storage:	-20 °C
Storage Comment:	Store at -20°C. Avoid freeze / thaw cycles.



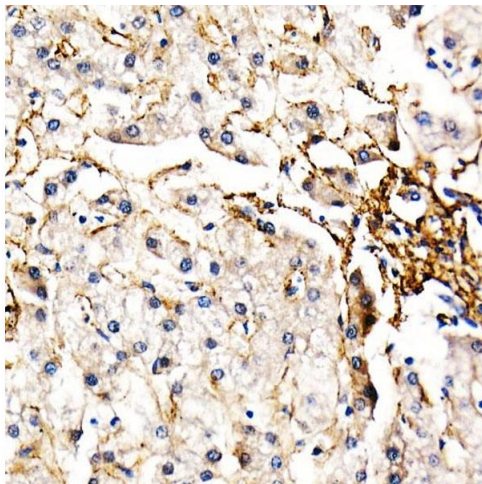
#### Immunofluorescence

**Image 1.** Immunofluorescence analysis of C6 cells using FBN1 Polyclonal Antibody (ABIN7267176) at dilution of 1:100 (40x lens). Blue: DAPI for nuclear staining.



#### Western Blotting

**Image 2.** Western blot analysis of extracts of Rat pancreas, using FBN1 antibody (ABIN7267176) at 1:1000 dilution. Secondary antibody: HRP Goat Anti-Rabbit IgG (H+L) (ABIN1684268 and ABIN3020597) at 1:10000 dilution. Lysates/proteins: 25 µg per lane. Blocking buffer: 3 % nonfat dry milk in TBST. Detection: ECL Basic Kit (RM00020). Exposure time: 90s.



#### Immunohistochemistry

**Image 3.** Immunohistochemistry of paraffin-embedded human liver using FBN1 Rabbit pAb (ABIN7267176) at dilution of 1:50 (40x lens). Perform high pressure antigen retrieval with 10 mM citrate buffer pH 6.0 before commencing with IHC staining protocol.

Please check the [product details page](#) for more images. Overall 5 images are available for ABIN7267176.