

Datasheet for ABIN7267179

**anti-FGL1 antibody****1** Image[Go to Product page](#)

## Overview

Quantity:	100 µL
Target:	FGL1
Reactivity:	Human
Host:	Rabbit
Clonality:	Monoclonal
Conjugate:	This FGL1 antibody is un-conjugated
Application:	Western Blotting (WB)

## Product Details

Purpose:	FGL1 Rabbit mAb
Immunogen:	Recombinant protein of human FGL-1 Full length.
Isotype:	IgG
Cross-Reactivity:	Human
Characteristics:	Monoclonal Antibodies
Purification:	Affinity purification

## Target Details

Target:	FGL1
Alternative Name:	FGL1 ( <a href="#">FGL1 Products</a> )
Background:	Fibrinogen-like protein 1 (FGL1), a liver-secreted protein, is a major LAG-3 functional ligand

## Target Details

independent from MHC-II. The FGL1-LAG-3 pathway maybe an important immune evasion mechanism and could contribute to current cancer immunotherapy efforts for several reasons. FGL1 inhibits antigen-specific T cell activation, and ablation of FGL1 in mice promotes T cell immunity. Blockade of the FGL1-LAG-3 interaction by monoclonal antibodies stimulates tumor immunity and is therapeutic against established mouse tumors in a receptor-ligand inter-dependent manner. FGL1 is highly produced by human cancer cells, and elevated FGL1 in the plasma of cancer patients is associated with a poor prognosis and resistance to anti-PD-1/B7-H1 therapy,FGL1,HFREP1,HP-041,LFIRE-1,LFIRE1,Cardiovascular,Blood,Coagulation,Serum Proteins,FGL1

Molecular Weight:	36kDa
-------------------	-------

Gene ID:	2267
----------	------

UniProt:	<a href="#">Q08830</a>
----------	------------------------

## Application Details

Application Notes:	WB,1:500 - 1:1000
--------------------	-------------------

Restrictions:	For Research Use only
---------------	-----------------------

## Handling

Format:	Liquid
---------	--------

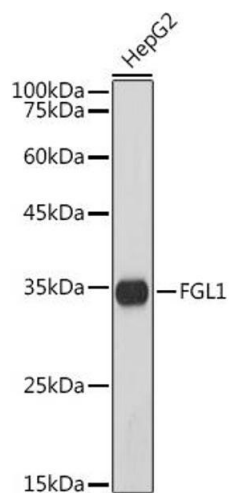
Buffer:	PBS with 0.09 % sodium azide,50 % glycerol, pH 7.4.
---------	---

Preservative:	Sodium azide
---------------	--------------

Precaution of Use:	This product contains Sodium azide: a POISONOUS AND HAZARDOUS SUBSTANCE which should be handled by trained staff only.
--------------------	--

Storage:	4 °C,-20 °C
----------	-------------

Storage Comment:	Store at -20°C. Avoid freeze / thaw cycles.
------------------	---



### Western Blotting

**Image 1.** Western blot analysis of extracts of HepG2 cells, using FGL1 antibody (ABIN7267179) at 1:1000 dilution. Secondary antibody: HRP Goat Anti-Rabbit IgG (H+L) (ABIN1684268 and ABIN3020597) at 1:10000 dilution. Lysates/proteins: 25 µg per lane. Blocking buffer: 3 % nonfat dry milk in TBST. Detection: ECL Basic Kit (RM00020). Exposure time: 90s.