

Datasheet for ABIN7267189

anti-FGF7 antibody[Go to Product page](#)**1** Image

Overview

Quantity:	100 µL
Target:	FGF7
Reactivity:	Human
Host:	Rabbit
Clonality:	Monoclonal
Conjugate:	This FGF7 antibody is un-conjugated
Application:	Western Blotting (WB)

Product Details

Purpose:	FGF7/KGF Rabbit mAb
Immunogen:	A synthesized peptide derived from human FGF7/FGF7/KGF
Isotype:	IgG
Cross-Reactivity:	Human, Mouse, Rat
Characteristics:	Monoclonal Antibodies
Purification:	Affinity purification

Target Details

Target:	FGF7
Alternative Name:	FGF7 (FGF7 Products)
Background:	The protein encoded by this gene is a member of the fibroblast growth factor (FGF) family. FGF

Target Details

family members possess broad mitogenic and cell survival activities, and are involved in a variety of biological processes, including embryonic development, cell growth, morphogenesis, tissue repair, tumor growth and invasion. This protein is a potent epithelial cell-specific growth factor, whose mitogenic activity is predominantly exhibited in keratinocytes but not in fibroblasts and endothelial cells. Studies of mouse and rat homologs of this gene implicated roles in morphogenesis of epithelium, reepithelialization of wounds, hair development and early lung organogenesis. [provided by RefSeq, Jul 2008],HBGF-7, KGF,Cancer,Cell Biology & Developmental Biology,Growth factors,Signal Transduction,FGF7

Molecular Weight: 28kDa

Gene ID: 2252

UniProt: [P21781](#)

Pathways: [RTK Signaling](#), [Fc-epsilon Receptor Signaling Pathway](#), [EGFR Signaling Pathway](#), [Neurotrophin Signaling Pathway](#)

Application Details

Application Notes: WB,1:500 - 1:2000

Restrictions: For Research Use only

Handling

Format: Liquid

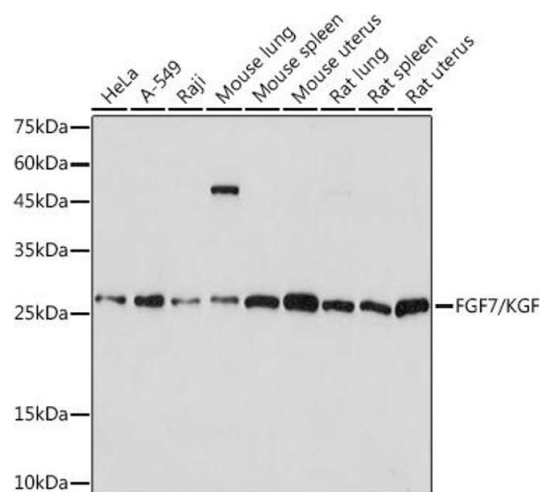
Buffer: PBS with 0.02 % sodium azide,0.05 % BSA,50 % glycerol, pH 7.3.

Preservative: Sodium azide

Precaution of Use: This product contains Sodium azide: a POISONOUS AND HAZARDOUS SUBSTANCE which should be handled by trained staff only.

Storage: -20 °C

Storage Comment: Store at -20°C. Avoid freeze / thaw cycles.



Western Blotting

Image 1. Western blot analysis of extracts of various cell lines, using FGF7/FGF7/KGF Rabbit mAb (ABIN7267189) at 1:1000 dilution. Secondary antibody: HRP Goat Anti-Rabbit IgG (H+L) (ABIN1684268 and ABIN3020597) at 1:10000 dilution. Lysates/proteins: 25 µg per lane. Blocking buffer: 3 % nonfat dry milk in TBST. Detection: ECL Basic Kit (RM00020). Exposure time: 60s.