

Datasheet for ABIN7267193

anti-FGFR4 antibody

3 Images

[Go to Product page](#)

Overview

Quantity:	100 µL
Target:	FGFR4
Reactivity:	Human
Host:	Rabbit
Clonality:	Monoclonal
Conjugate:	This FGFR4 antibody is un-conjugated
Application:	Western Blotting (WB), Immunohistochemistry (IHC)

Product Details

Purpose:	FGFR4 Rabbit mAb
Immunogen:	A synthesized peptide derived from human FGFR4
Isotype:	IgG
Cross-Reactivity:	Human, Mouse
Characteristics:	Monoclonal Antibodies
Purification:	Affinity purification

Target Details

Target:	FGFR4
Alternative Name:	FGFR4 (FGFR4 Products)
Background:	The protein encoded by this gene is a member of the fibroblast growth factor receptor family,

Target Details

where amino acid sequence is highly conserved between members and throughout evolution. FGFR family members differ from one another in their ligand affinities and tissue distribution. A full-length representative protein would consist of an extracellular region, composed of three immunoglobulin-like domains, a single hydrophobic membrane-spanning segment and a cytoplasmic tyrosine kinase domain. The extracellular portion of the protein interacts with fibroblast growth factors, setting in motion a cascade of downstream signals, ultimately influencing mitogenesis and differentiation. The genomic organization of this gene, compared to members 1-3, encompasses 18 exons rather than 19 or 20. Although alternative splicing has been observed, there is no evidence that the C-terminal half of the IgIII domain of this protein varies between three alternate forms, as indicated for members 1-3. This particular family member preferentially binds acidic fibroblast growth factor and, although its specific function is unknown, it is overexpressed in gynecological tumor samples, suggesting a role in breast and ovarian tumorigenesis. [provided by RefSeq, Jul 2008],CD334, JTK2, TKF,Angiogenesis,Cancer,Cardiovascular,CDs,Cell Biology & Developmental Biology,Cell Type Marker,Cell Type Marker_Neural Stem Cell marker,ESC Pluripotency and Differentiation,Growth factors,Immunology & Inflammation,Kinase,Kinase_Tyrosine kinases,Neural Stem Cells,Neuroscience,Signal Transduction,Stem Cells,FGFR4

Molecular Weight:	88kDa
Gene ID:	2264
UniProt:	P22455
Pathways:	RTK Signaling , Fc-epsilon Receptor Signaling Pathway , EGFR Signaling Pathway , Neurotrophin Signaling Pathway , Carbohydrate Homeostasis , Growth Factor Binding

Application Details

Application Notes:	WB,1:500 - 1:2000,IHC,1:50 - 1:200
Restrictions:	For Research Use only

Handling

Format:	Liquid
Buffer:	PBS with 0.02 % sodium azide,0.05 % BSA,50 % glycerol, pH 7.3.
Preservative:	Sodium azide
Precaution of Use:	This product contains Sodium azide: a POISONOUS AND HAZARDOUS SUBSTANCE which

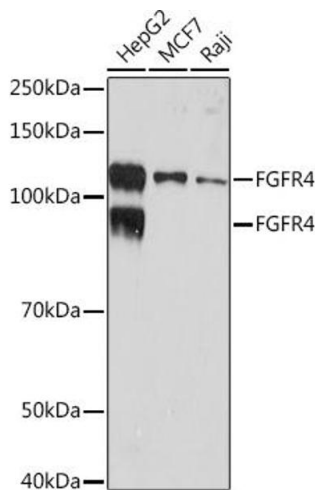
Handling

should be handled by trained staff only.

Storage: -20 °C

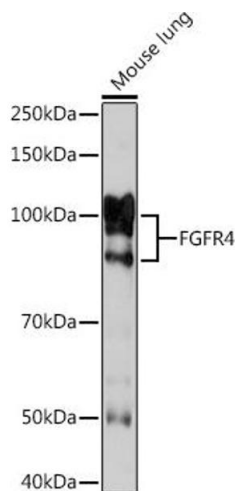
Storage Comment: Store at -20°C. Avoid freeze / thaw cycles.

Images



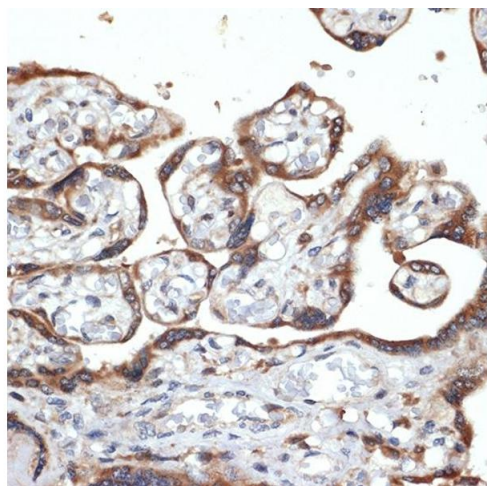
Western Blotting

Image 1. Western blot analysis of extracts of various cell lines, using FGFR4 Rabbit mAb (ABIN7267193) at 1:1000 dilution. Secondary antibody: HRP Goat Anti-Rabbit IgG (H+L) (ABIN1684268 and ABIN3020597) at 1:10000 dilution. Lysates/proteins: 25 µg per lane. Blocking buffer: 3 % nonfat dry milk in TBST. Detection: ECL Basic Kit (RM00020). Exposure time: 3 min.



Western Blotting

Image 2. Western blot analysis of extracts of Mouse lung, using FGFR4 Rabbit mAb (ABIN7267193) at 1:1000 dilution. Secondary antibody: HRP Goat Anti-Rabbit IgG (H+L) (ABIN1684268 and ABIN3020597) at 1:10000 dilution. Lysates/proteins: 25 µg per lane. Blocking buffer: 3 % nonfat dry milk in TBST. Detection: ECL Enhanced Kit (RM00021). Exposure time: 3 min.



Immunohistochemistry

Image 3. Immunohistochemistry of paraffin-embedded human placenta using FGFR4 Rabbit mAb (ABIN7267193) at dilution of 1:100 (40x lens). Perform microwave antigen retrieval with 10 mM Tris/EDTA buffer pH 9.0 before commencing with IHC staining protocol.