



[Go to Product page](#)

Datasheet for ABIN7267200

anti-Fibulin 1 antibody (AA 570-670)

2 Images

Overview

Quantity:	100 µL
Target:	Fibulin 1 (FBLN1)
Binding Specificity:	AA 570-670
Reactivity:	Human
Host:	Rabbit
Clonality:	Polyclonal
Conjugate:	This Fibulin 1 antibody is un-conjugated
Application:	Western Blotting (WB)

Product Details

Purpose:	FBLN1 Rabbit pAb
Immunogen:	Recombinant fusion protein containing a sequence corresponding to amino acids 570-670 of human FBLN1 (NP_001987.2).
Sequence:	RLPCHENREC SKLPLRITYY HLSFPTNIQA PAVVFRMGPS SAVPGDSMQL AITGGNEEGF FTTRKVSPHS GVVALT KPVP EPRDLLLTVK MDLSRHGTVS S
Isotype:	IgG
Cross-Reactivity:	Human, Mouse, Rat
Characteristics:	Polyclonal Antibodies
Purification:	Affinity purification

Target Details

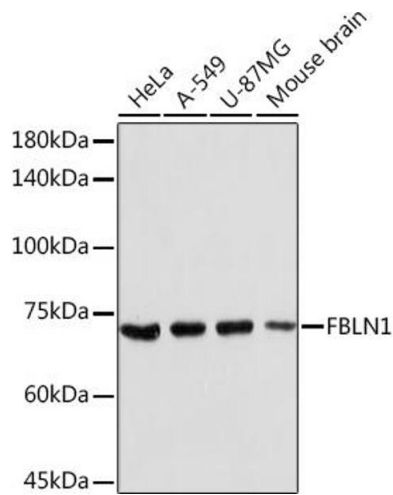
Target:	Fibulin 1 (FBLN1)
Alternative Name:	FBLN1 (FBLN1 Products)
Background:	Fibulin 1 is a secreted glycoprotein that becomes incorporated into a fibrillar extracellular matrix. Calcium-binding is apparently required to mediate its binding to laminin and nidogen. It mediates platelet adhesion via binding fibrinogen. Four splice variants which differ in the 3' end have been identified. Each variant encodes a different isoform, but no functional distinctions have been identified among the four variants.,FBLN1;FBLN;FIBL1;fibulin-1,Cancer,Tumor suppressors,Signal Transduction,Cell Biology & Developmental Biology,Cell Adhesion,Cell Adhesion Molecules,Cytoskeleton,Extracellular Matrix,Cardiovascular,Blood,Coagulation,FBLN1
Molecular Weight:	61kDa/65kDa/74kDa/77kDa
Gene ID:	2192
UniProt:	P23142

Application Details

Application Notes:	WB,1:500 - 1:2000
Restrictions:	For Research Use only

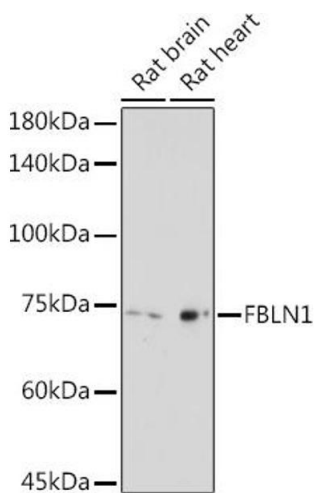
Handling

Format:	Liquid
Buffer:	PBS with 0.02 % sodium azide,50 % glycerol, pH 7.3.
Preservative:	Sodium azide
Precaution of Use:	This product contains Sodium azide: a POISONOUS AND HAZARDOUS SUBSTANCE which should be handled by trained staff only.
Storage:	-20 °C
Storage Comment:	Store at -20°C. Avoid freeze / thaw cycles.



Western Blotting

Image 1. Western blot analysis of extracts of various cell lines, using FBLN1 Rabbit pAb (ABIN7267200) at 1:2000 dilution. Secondary antibody: HRP Goat Anti-Rabbit IgG (H+L) (ABIN1684268 and ABIN3020597) at 1:10000 dilution. Lysates/proteins: 25 µg per lane. Blocking buffer: 3 % nonfat dry milk in TBST. Detection: ECL Enhanced Kit (RM00021). Exposure time: 10s.



Western Blotting

Image 2. Western blot analysis of extracts of various cell lines, using FBLN1 Rabbit pAb (ABIN7267200) at 1:2000 dilution. Secondary antibody: HRP Goat Anti-Rabbit IgG (H+L) (ABIN1684268 and ABIN3020597) at 1:10000 dilution. Lysates/proteins: 25 µg per lane. Blocking buffer: 3 % nonfat dry milk in TBST. Detection: ECL Basic Kit (RM00020). Exposure time: 180s.