



[Go to Product page](#)

Datasheet for ABIN7267214

anti-FKBP8 antibody

4 Images

Overview

Quantity:	100 µL
Target:	FKBP8
Reactivity:	Human
Host:	Rabbit
Clonality:	Monoclonal
Conjugate:	This FKBP8 antibody is un-conjugated
Application:	Western Blotting (WB), Immunofluorescence (IF)

Product Details

Purpose:	FKBP38/FKBP8 Rabbit mAb
Immunogen:	A synthesized peptide derived from human FKBP38/FKBP8
Isotype:	IgG
Cross-Reactivity:	Human, Mouse, Rat
Characteristics:	Monoclonal Antibodies
Purification:	Affinity purification

Target Details

Target:	FKBP8
Alternative Name:	FKBP8 (FKBP8 Products)
Background:	The protein encoded by this gene is a member of the immunophilin protein family, which play a

Target Details

role in immunoregulation and basic cellular processes involving protein folding and trafficking. Unlike the other members of the family, this encoded protein does not seem to have PPlase/rotamase activity. It may have a role in neurons associated with memory function. [provided by RefSeq, Jul 2008],FKBP38, FKBP38,Apoptosis,Calcium Signaling,Cell Biology & Developmental Biology,Epigenetics & Nuclear Signaling,Neuroscience,Signal Transduction,FKBP8

Molecular Weight: 52kDa

Gene ID: 23770

UniProt: [Q14318](#)

Pathways: [Autophagy](#)

Application Details

Application Notes: WB,1:500 - 1:2000,IF,1:50 - 1:200

Restrictions: For Research Use only

Handling

Format: Liquid

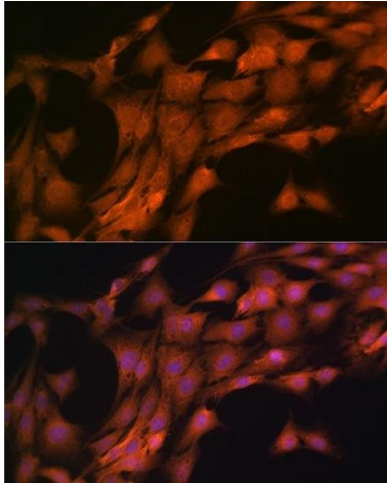
Buffer: PBS with 0.02 % sodium azide,0.05 % BSA,50 % glycerol, pH 7.3.

Preservative: Sodium azide

Precaution of Use: This product contains Sodium azide: a POISONOUS AND HAZARDOUS SUBSTANCE which should be handled by trained staff only.

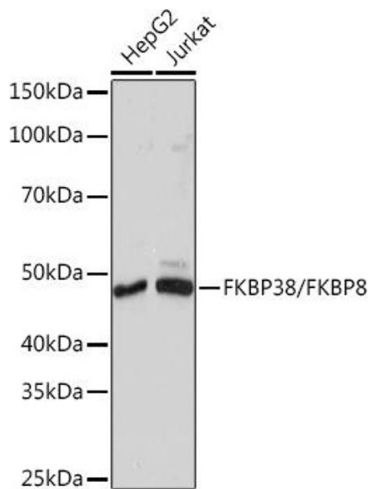
Storage: -20 °C

Storage Comment: Store at -20°C. Avoid freeze / thaw cycles.



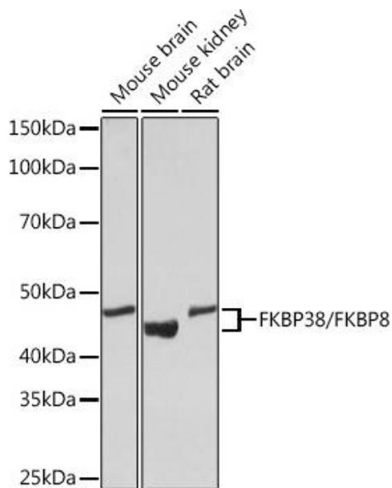
Immunofluorescence

Image 1. Immunofluorescence analysis of C6 cells using FKBP38/FKBP8 Rabbit mAb (ABIN7267214) at dilution of 1:100 (40x lens). Blue: DAPI for nuclear staining.



Western Blotting

Image 2. Western blot analysis of extracts of various cell lines, using FKBP38/FKBP8 Rabbit mAb (ABIN7267214) at 1:1000 dilution. Secondary antibody: HRP Goat Anti-Rabbit IgG (H+L) (ABIN1684268 and ABIN3020597) at 1:10000 dilution. Lysates/proteins: 25 µg per lane. Blocking buffer: 3 % nonfat dry milk in TBST. Detection: ECL Basic Kit (RM00020). Exposure time: 10s.



Western Blotting

Image 3. Western blot analysis of extracts of various cell lines, using FKBP38/FKBP8 Rabbit mAb (ABIN7267214) at 1:1000 dilution. Secondary antibody: HRP Goat Anti-Rabbit IgG (H+L) (ABIN1684268 and ABIN3020597) at 1:10000 dilution. Lysates/proteins: 25 µg per lane. Blocking buffer: 3 % nonfat dry milk in TBST. Detection: ECL Basic Kit (RM00020). Exposure time: 30s.

Please check the [product details page](#) for more images. Overall 4 images are available for ABIN7267214.