



[Go to Product page](#)

Datasheet for ABIN7267220  
**anti-FLYWCH2 antibody (AA 51-140)**

1 Image

Overview

Quantity:	100 µL
Target:	FLYWCH2
Binding Specificity:	AA 51-140
Reactivity:	Human
Host:	Rabbit
Clonality:	Polyclonal
Conjugate:	This FLYWCH2 antibody is un-conjugated
Application:	Western Blotting (WB)

Product Details

Purpose:	FLYWCH2 Rabbit pAb
Immunogen:	Recombinant fusion protein containing a sequence corresponding to amino acids 51-140 of human FLYWCH2 (NP_612448.1).
Sequence:	STKVAGAKRK GVHCVMSLGV PGPATLAKAL LQTHPEAQRA IEAAPQEPEQ KRSRQDPGTD RTEDSGLAAG PPEAAGENFA PCSVAPGKSL
Isotype:	IgG
Cross-Reactivity:	Human
Characteristics:	Polyclonal Antibodies
Purification:	Affinity purification

## Target Details

---

Target:	FLYWCH2
Alternative Name:	FLYWCH2 ( <a href="#">FLYWCH2 Products</a> )
Background:	FLYWCH2,Epigenetics & Nuclear Signaling,RNA Binding,Cell Biology & Developmental Biology,FLYWCH2
Molecular Weight:	14kDa
Gene ID:	114984
UniProt:	<a href="#">Q96CP2</a>

## Application Details

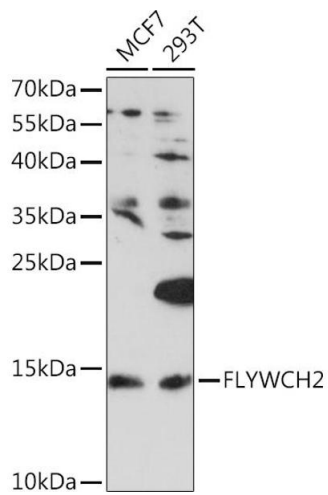
---

Application Notes:	WB,1:200 - 1:2000
Restrictions:	For Research Use only

## Handling

---

Format:	Liquid
Buffer:	PBS with 0.02 % sodium azide,50 % glycerol, pH 7.3.
Preservative:	Sodium azide
Precaution of Use:	This product contains Sodium azide: a POISONOUS AND HAZARDOUS SUBSTANCE which should be handled by trained staff only.
Storage:	-20 °C
Storage Comment:	Store at -20°C. Avoid freeze / thaw cycles.



### Western Blotting

**Image 1.** Western blot analysis of extracts of various cell lines, using FLYWCH2 Rabbit pAb (ABIN7267220) at 1:1000 dilution. Secondary antibody: HRP Goat Anti-Rabbit IgG (H+L) (ABIN1684268 and ABIN3020597) at 1:10000 dilution. Lysates/proteins: 25 µg per lane. Blocking buffer: 3 % nonfat dry milk in TBST. Detection: ECL Enhanced Kit (RM00021). Exposure time: 90s.